



SAF-HOLLAND Group

HOLLAND FW6170/FW6160-A

SLIDING AND HEIGHT
ADJUSTABLE
RAILCAR TRAILER
HITCHES WITH
15.000 KG LOAD



HOLLAND RAILCAR TRAILER HITCHES FW6170/FW6160-A

Leading in know-how, advanced in design, and a model of safety and efficiency.

For more than a decade, HOLLAND railcar trailer hitches have been considered to be the perfect system solution for combined freight transport. That is why leading manufacturers of double pocket wagons all over the world and their customers, the railroad companies, rely on the superior performance characteristics of SAF-HOLLAND railcar trailer hitches, because:

If required SAF-HOLLAND is able to design and deliver railcar couplers in accordance with individual customer specific requirements and in compliance with the Deutsche Bahn standards and regulations.

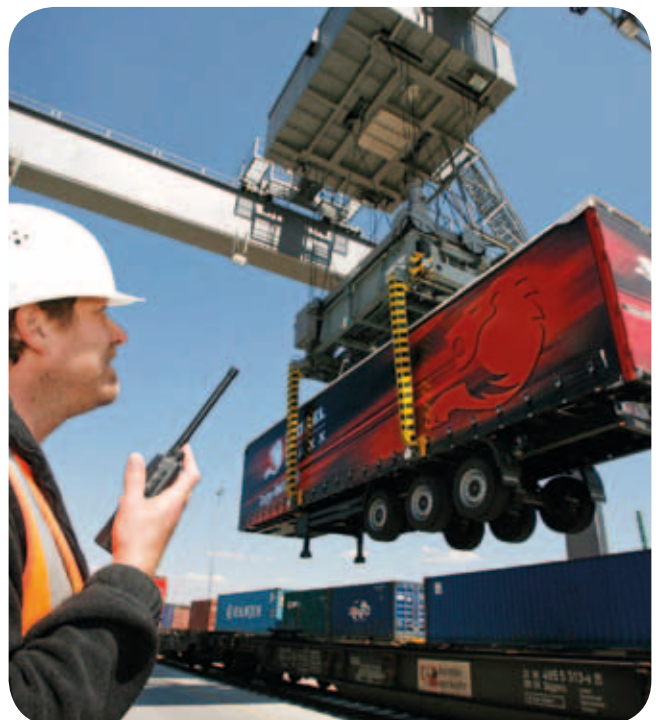
BENEFITS AT A GLANCE:

- A design which has been proven a thousand times, technically mature and rugged.
- Low maintenance, easy to operate and safe to handle.
- Fully automatic hitch locking, triggered by the trailer loading operation.
- Each SAF-HOLLAND railcar trailer hitch meets current standards, guidelines and requirements of Deutsche Bahn.



SAF-HOLLAND Group

FW6170/FW6160-A SPECIAL RAILCAR HITCHES FOR SECURING TRAILERS DURING RAILROAD TRANSPORT

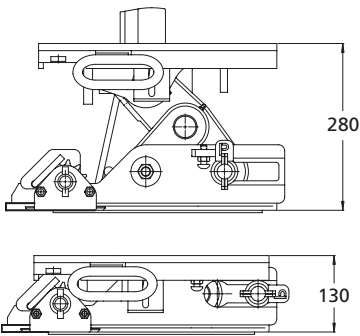
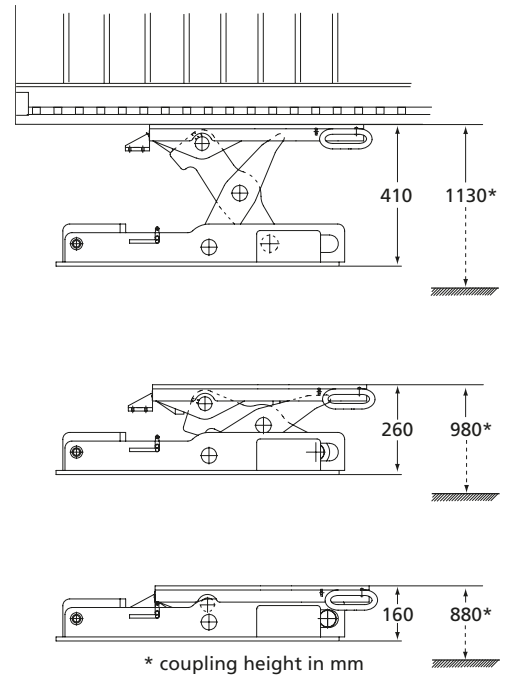


Time-saving and secure:

The latch locks automatically after the kingpin is lowered into the railcar hitch.

FW-6170

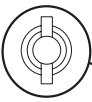
permanently mounted coupling
adjustable to three different heights – 1130, 980,
and 880 mm – with bevel gear and spindle drive



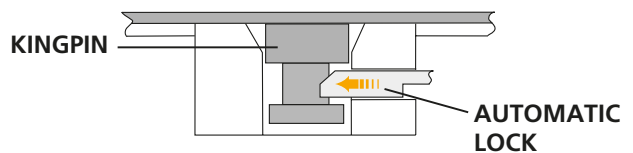
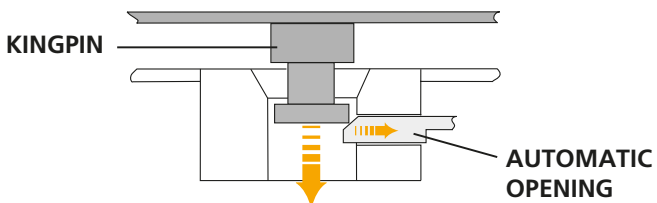
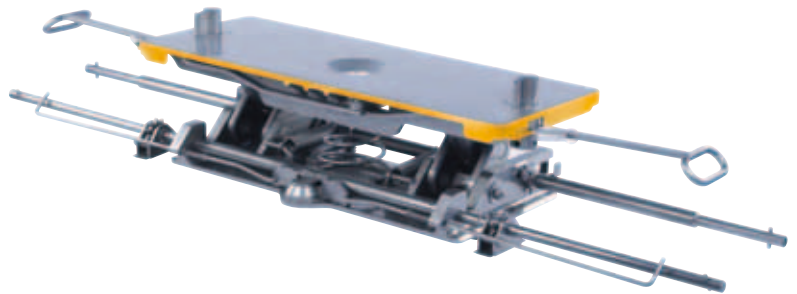
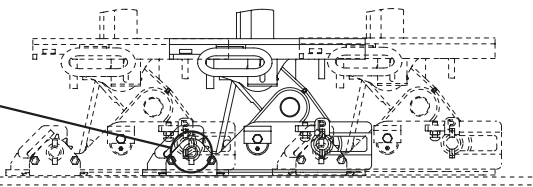
FW-6160-A

adjustable to two different heights –
280 and 130 mm – using spring force
can be moved backward and forward

drive shaft



slide rail





SAF's history begins in 1881 in a village forge in Germany with the invention of a new plough. The family business soon starts building steel axles for agricultural vehicles, and under the name Otto Sauer Achsenfabrik (SAF) develops into one of the leading manufacturers of trailer axles and suspension systems in Europe.

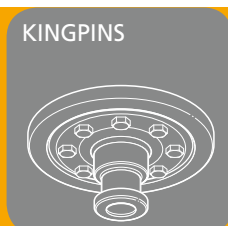
A safety coupling between plough and horse team can be found at the beginning of Holland's history. The Safety Release Clevis Company was founded in South Dakota, USA, in 1910. After its move to Holland, Michigan, the company emerges as one of the largest supplier companies to the commercial vehicles industry under the name The Holland Hitch Company.

The merger of the two companies to form SAF-HOLLAND in 2006 creates one of the leading global suppliers of high-quality components and services for the commercial vehicle industry. Alongside axle and suspension systems for trailers and semi-trailers, the product range also includes kingpins and landing gear as well as fifth wheels for tractors, air suspensions, coupling products and numerous other components for buses and trucks.

In 2008, SAF-HOLLAND takes over Georg Fischer Verkehrstechnik, a leading supplier to the commercial vehicle industry, expanding its product range with GF fifth wheels and kingpins as well as the TRILEX wheel system and accessories for tractors, semitrailers and trailers.

Today the SAF-HOLLAND group is represented on all continents and distributes its products and services worldwide under the brand names SAF and HOLLAND as well as GF, TRILEX and NEWAY. It possesses its own distribution network with global service and dealer locations.

HIGH QUALITY COMPONENTS FOR THE COMMERCIAL VEHICLE INDUSTRY



EUROPE · NORTH AMERICA · SOUTH AMERICA · AFRICA · ASIA · AUSTRALIA

SAF-HOLLAND Verkehrstechnik GmbH

Julius-Bührer-Straße 12 · 78224 Singen (Htwl.) · Germany · Contact: Günter Offelnotto · Phone +49 7731 1443492

www.vkt.safholland.com

