

SAF STEERING WEDGE

FULLY DEVELOPED,
ROBUST AND EFFICIENT:
THE SAF STEERING
WEDGE FOR SEMI
TRAILERS WITH
FORCED STEERING



SAF STEERING WEDGE FOR SEMI TRAILERS WITH FORCED STEERING



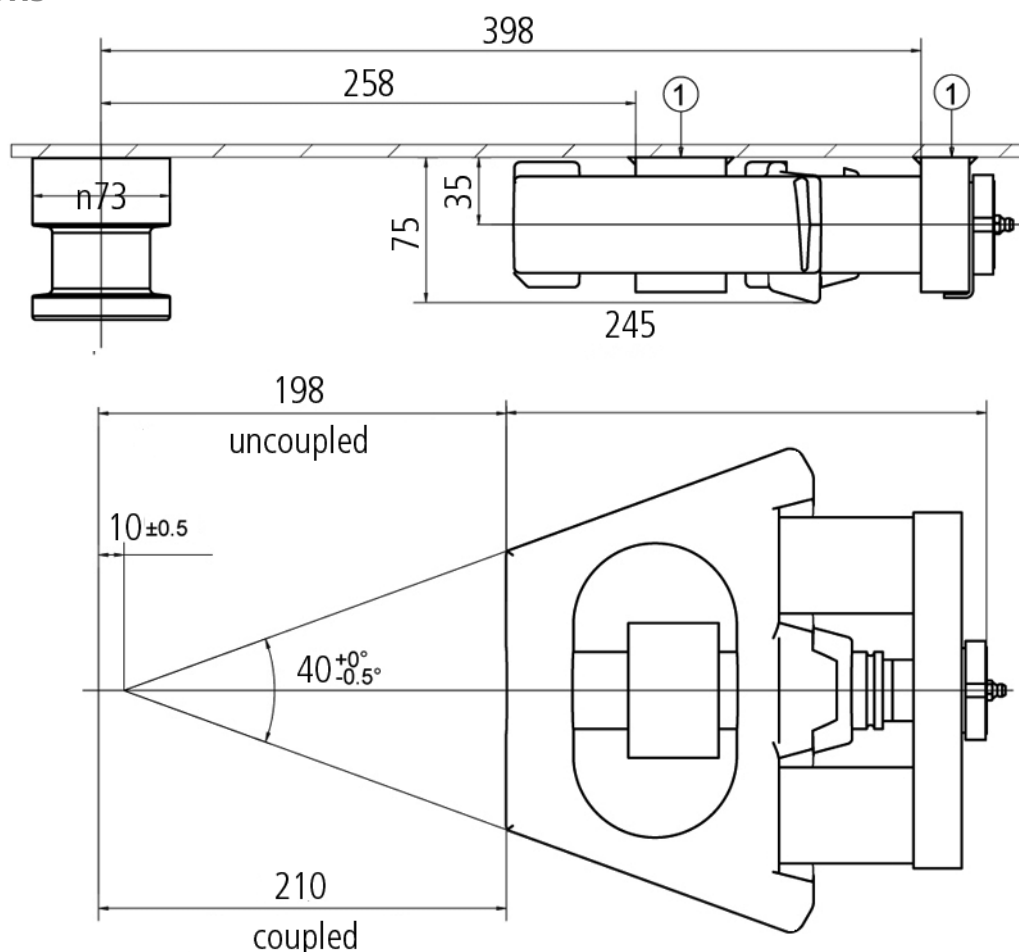
- Robust body made of spheroidal graphite cast iron guarantees a long life even under the toughest operating conditions.
- The integrated rubber spring suspension with a spring extension of 18 mm, prevents jamming during driving.
- The steering wedge does not require any special maintenance and the integrated lubrication system makes servicing easy.

Technical data

Type	Model	Type approval	Weight kg	Order no.
Steering wedge assembly	Spring suspension	DIN 74085	12.2	662 101 280
Steering wedge assembly	Spring suspension	DIN 74085	12.2	662 101 280 F*

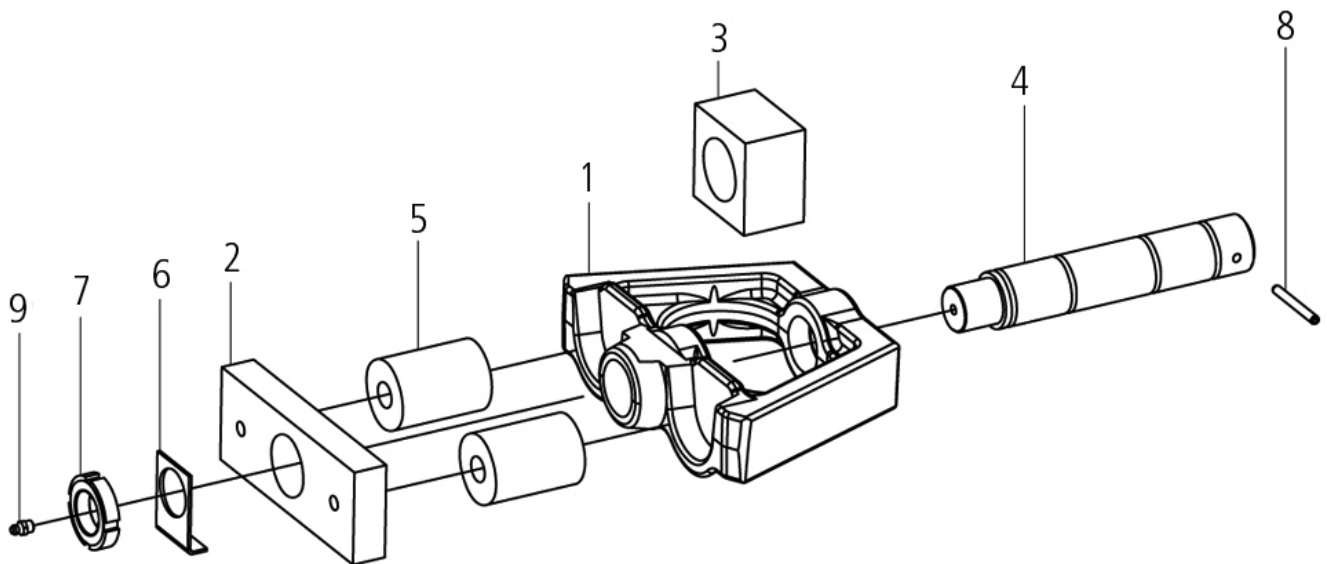
*fixed with inserted nuts

Dimensions



Spare parts

Type	Position	Pcs.	Order no.
Wedge	1	1	662 101 282
Bearing, rear	2	1	662 101 279
Bearing, front	3	1	662 101 278
Wedge guide shaft	4	1	662 101 281
Rubber spring	5	2	662 101 310
Locking plate	6	1	662 101 374
Groove nut	7	1	659 115 126
Rollpin	8	1	659 100 022
Grease nipple	9	1	662 126 224



Fitting instructions

Fastening is carried out by a continuous weld seam (seam thickness 5 mm) of the bearing (1) on the trailer plate. We recommend the welding processes E II or MAG C. Only high quality filler material may be used.

Important: The specified assembly dimensions are to be strictly observed. These dimensions produce a theoretical initial tension of 12 mm. The total spring extension is 18 mm.



SAF's history begins in 1881 in a village forge in Germany with the invention of a new plough. The family business soon starts building steel axles for agricultural vehicles, and under the name Otto Sauer Achsenfabrik (SAF) develops into one of the leading manufacturers of trailer axles and suspension systems in Europe.

A safety coupling between plough and horse team can be found at the beginning of Holland's history. The Safety Release Clevis Company was founded in South Dakota, USA, in 1910. After its move to Holland, Michigan, the company emerges as one of the largest supplier companies to the commercial vehicles industry under the name The Holland Hitch Company.

The merger of the two companies to form SAF-HOLLAND in 2006 creates one of the leading global suppliers of high-quality components and services for the commercial vehicle industry. Alongside axle and suspension systems for trailers and semi-trailers, the product range also includes kingpins and landing gear as well as fifth wheels for tractors, air suspensions, coupling products and numerous other components for buses and trucks.

In 2008, SAF-HOLLAND takes over Georg Fischer Verkehrstechnik, a leading supplier to the commercial vehicle industry, expanding its product range with GF fifth wheels and kingpins as well as the TRILEX wheel system and accessories for tractors, semitrailers and trailers.

Today the SAF-HOLLAND group is represented on all continents and distributes its products and services worldwide under the brand names SAF and HOLLAND as well as GF, TRILEX and NEWAY. It possesses its own distribution network with global service and dealer locations.

HIGH QUALITY COMPONENTS AND SYSTEMS FOR THE COMMERCIAL VEHICLE INDUSTRY



EUROPE · NORTH AMERICA · SOUTH AMERICA · AFRICA · ASIA · AUSTRALIA

SAF-HOLLAND GmbH

Hauptstraße 26 · 63856 Bessenbach · Germany · Tel +49 6095 301-0

www.safholland.com

