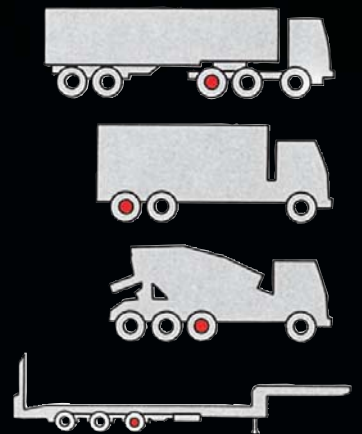


SAF Air Suspended tag axles for commercial vehicles

Increased payload
More driving comfort
Simple installation



The Axle Company



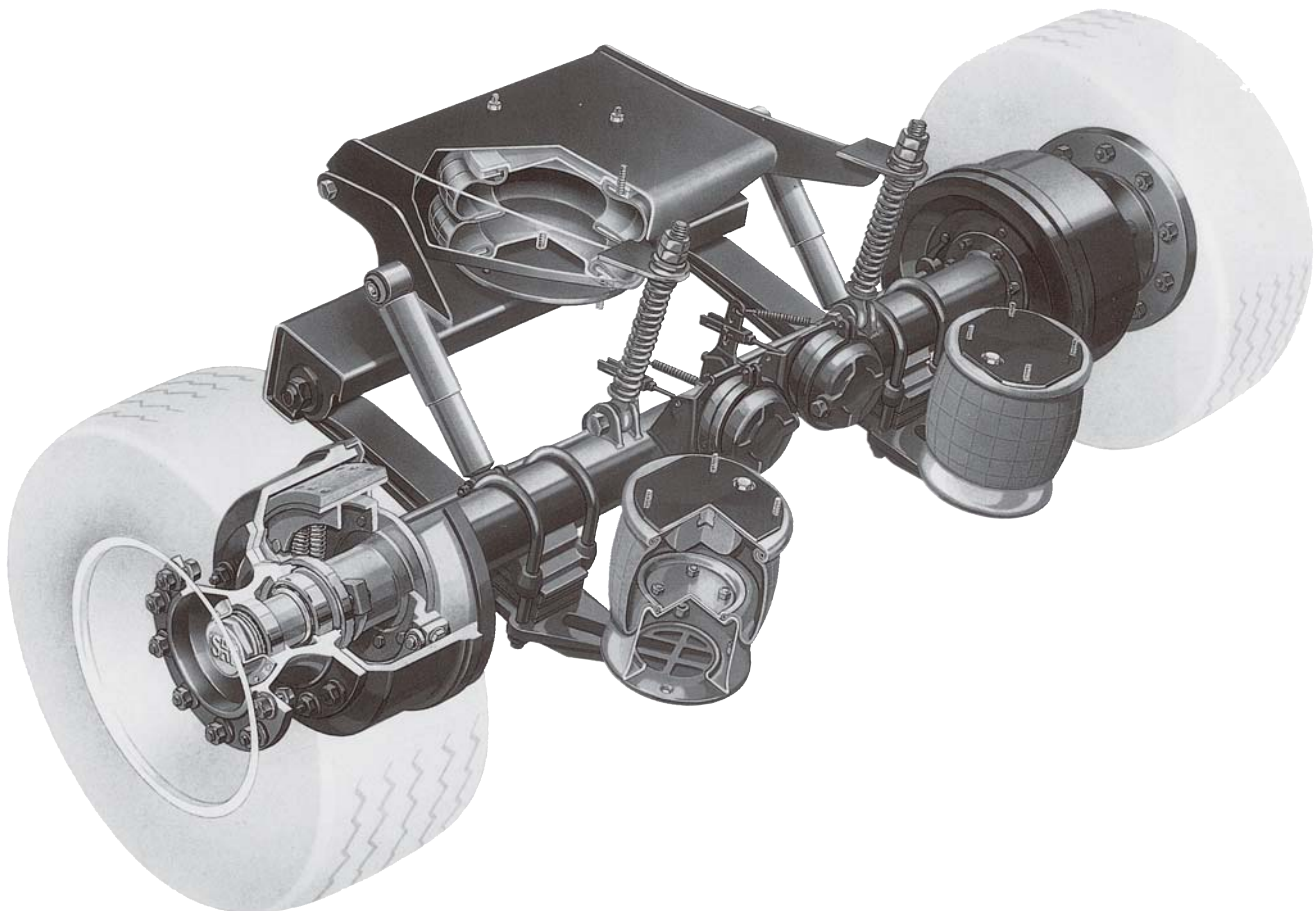
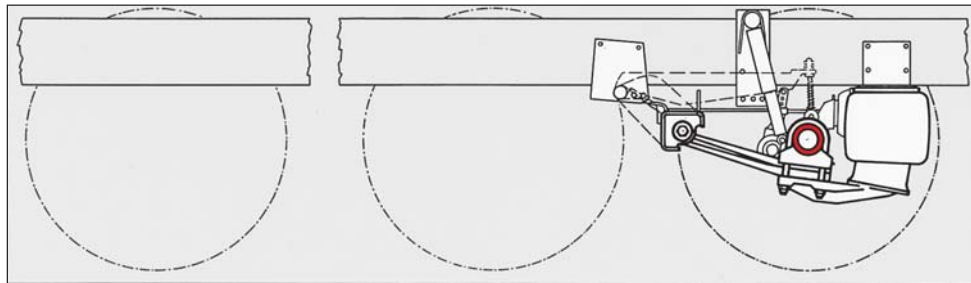
Air Suspended tag axles a cost-effective chassis conversion for improved efficiency and payload

Tried and tested design from the specialists of air suspended axles

The main function of the chassis is to maintain/improve vehicle driving standards and safety, and, in this respect, commercial vehicle and body manufacturers, together with transport companies, are increasingly recognising the advantages of air suspended vehicle chassis.

The sum of their technical advantages is therefore not even approached by any other suspension principle. Up-to-date and cost-effective solutions in the field of transport technology are today firmly associated with the air suspension principle, and in turn with the SAF organisation, which has been the leader in the air suspension field for over 30 years. SAF has by

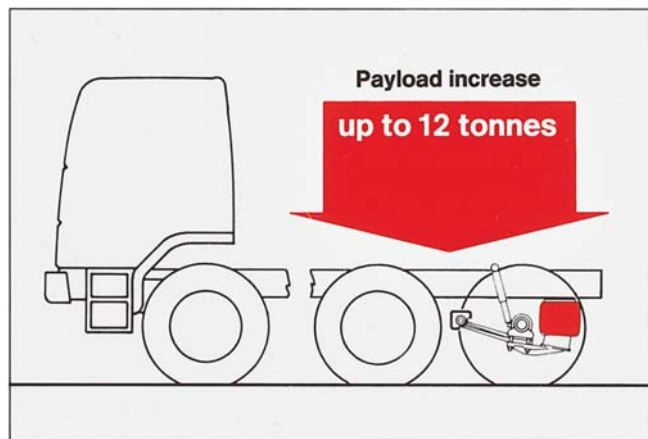
far the longest experience of commercial vehicle air suspension systems in Europe and has supplied assembled axle and air suspension assemblies to the truck and trailer industry for every application.



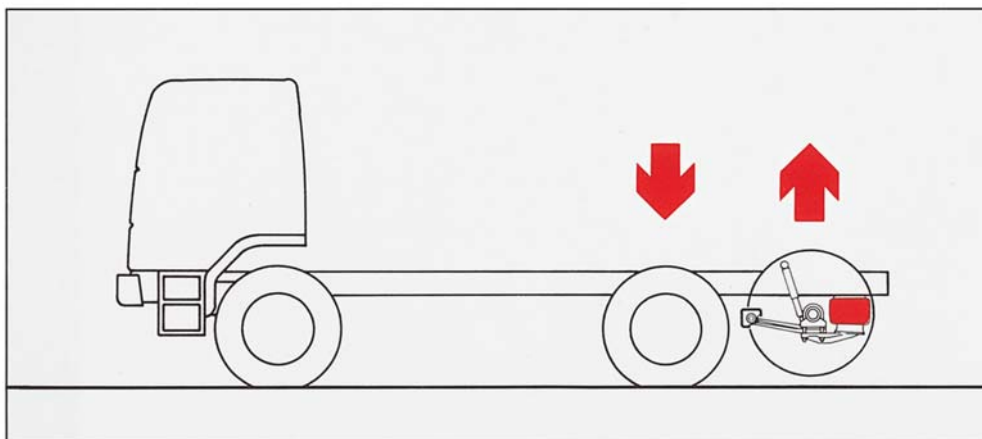
SAF tag axles- the profitable advantages of cost-effective transport technology

- available in drum and disc brakes

- Up to 12 tonnes increased payload by fitting an SAF tag axle.
- Improved driving comfort through the use of the air suspension principle: softer ride/more stability.
- Tyre-saving by using axle lift or self steer tag axles during; empty part load or shunting operations.
- Improved traction on the drive axle in slippery conditions, ie. roads covered with snow, ice or mud.
 - Short term reduction of tag axle load so imposing more weight on the drive axle.
- Cost effective maintenance, trouble-free fitting to all current commercial vehicle types. Incorporates maintenance free pivot bearings and a minimal number of moving/wearing parts.
- Complete system, axle and air suspension supplied in one unit, ie. matched assembly of components including pneumatic parts.
- Proven design; leading commercial vehicle manufacturers incorporate SAF tag axles on the assembly line during vehicle manufacture.



Increased payloads



Improved traction on drive axle when tag axle is lifted

The responsibility of EEC vehicle approval/registration and licencing are not undertaken by SAF

SAF tag axles comply with EEC regulations, copies of which are available on request