

TRILEX[®] UNIVERSAL WHEEL SYSTEM

the original

WHEELSPIDERS

RIMS

ACCESSORIES



More Efficiency

The original TRILEX® wheel system

The original TRILEX® wheel system consists of a TRILEX® wheel spider and a detachable TRILEX® rim, of which the single parts can be aligned and centred simply and precisely.

The most important benefit of this construction is that, if needed, the tyre can be removed from the rim without use of a machine: this means that the individual wheel as well as the tyre can be changed quickly and safely practically at any time or anywhere.

The original TRILEX® wheel system was especially developed for commercial vehicles in close collaboration with vehicle manufacturers and has been proven worldwide and hundred-thousandfold in the daily operation of trucks and trailers as well as tractor trucks, semi-trailers and buses.

SAF-HOLLAND, through the takeover of Georg Fischer Verkehrstechnik in Singen, now supplies the original TRILEX® wheel system as well as original spare parts.

The advantages for you at a glance:

- Optimum design of wheelspider and rim saves weight and thus increases payload
- Better cooling prolongs the service life of tyres and brakes
- Lower tightening torque of bolts eases wheel change
- Risk-free tyre change due to 3-piece TRILEX® rim
- Robust design ensures highest safety with additional loads
- Precision machining of wheelspider improves rolling characteristics



Wheelspider with TRILEX rim
15"/20"/24"



for tubed tyres



Wheelspider with TUBLEX rim
22.5"



for tubeless tyres

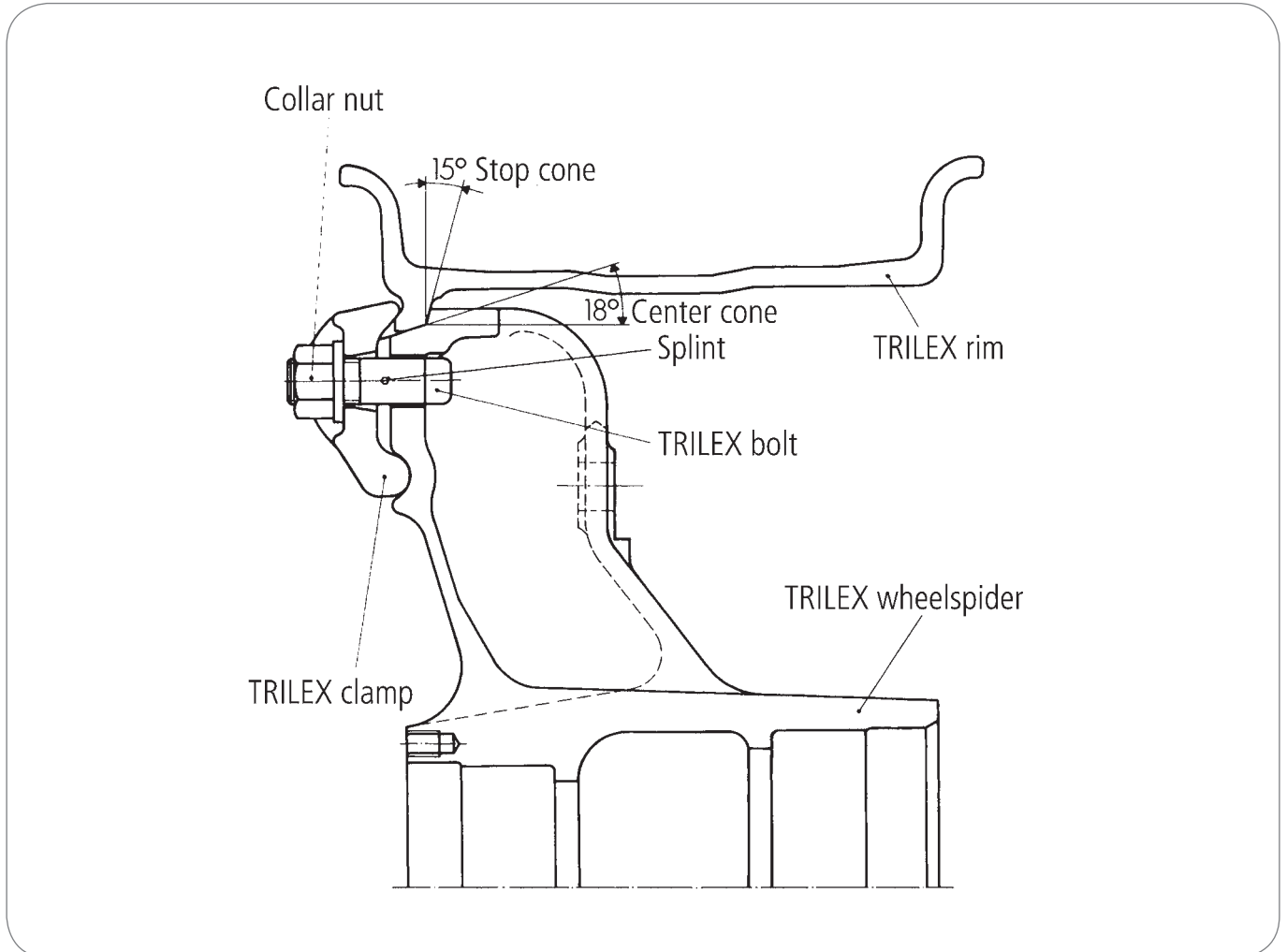
The original TRILEX® wheel system from SAF-HOLLAND is available

- In sizes 15", 20", 22.5", 24"
- For tubed and tubeless tyres
- For single tyre or twin tyres
- For vehicles of all well-known manufacturers

Note: Rims of 28° cone wheel systems are not interchangeable with the TRILEX® system

TRILEX[®]-Double cone centering

Ensures perfect alignment of rim on the TRILEX[®]-wheelspider.



TRILEX[®] – for tubeless tyres

TUBLEX[®]-drop centre rims for tubeless tyres can be fitted on the same TRILEX[®]-wheelspider and with the same clamps as the TRILEX[®]-rims. The same advantages of TRILEX[®]-are therefore enjoyed when using tubeless tyres.

Important assembly instructions

Before assembly, clean all parts such as spoke heads, rim mounting bevel, bolts and clamps.

To ensure perfect rim alignment and centering, contact surfaces between wheel centre and rim must be free of paint.

Tighten nuts several times in turn, always round the wheel and not crosswise.

On all new vehicles, and following each changeover of wheels, tighten nuts to the specified torque after a brief trial run and then again after further 50-100 km (30-60 miles). Check the torque from time to time.

Never repair or weld them.

Use the following torques

- M18 bolts: 270–300 Nm
- M20 bolts: 320–350 Nm

TRILEX[®]-adaptors

Vehicles equipped with disc wheels can be changed over to the TRILEX[®] wheel by means of TRILEX[®] adaptors (20" and 24"). Selection of the suitable adaptor depends on: type of vehicle and/or axle, track, tyres used, profile of brake drum and fixation (centering). Our technical customer service representatives will be glad to assist you.

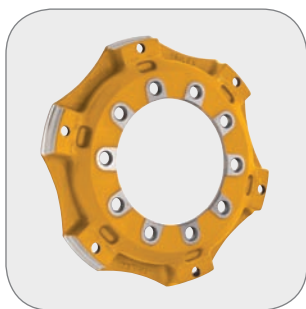
TRILEX[®]-Adaptors for twin tyres



Type	Size inch	Weight kg	Order no.
Rear adaptor	20	36.0	604 260 154
Rear adaptor	20	35.5	604 260 160
Rear adaptor	24	44.0	604 260 232
Rear adaptor	24	43.0	604 260 240

Further specifications on request

TRILEX[®]-Adaptors for single tyres



Type	Size inch	Weight kg	Order no.
Front adaptor	24	22.0	604 260 181
Front adaptor	24	23.0	604 260 197
Front adaptor	20	16.0	604 260 315
Front adaptor	24	23.0	604 260 333
Front adaptor	20	15.7	604 260 351

Further specifications on request

TRILEX[®]-wheelspiders

TRILEX[®]-wheels have stood up to the toughest possible operating conditions the world over and are offered by all of the leading vehicle manufacturers. TRILEX[®]-wheels are engineered to specific axle size in respect to bearings, seals, brakes, track, carrying capacity, etc.

For safety reasons, use exclusively original TRILEX[®] parts. Our product guarantee becomes invalid if non-original parts are used. Original TRILEX[®] spare parts can be obtained throughout the world from our branch offices or sales representatives. Please ask us for their addresses.

TRILEX[®]-Wheelspiders for twin tyres



Type	Size inch	Weight kg	Order no.
Trailer wheelspider	24	64.5	604 110 686
Trailer wheelspider	20	45.0	604 202 134
Trailer wheelspider	20	44.0	604 202 194
Trailer wheelspider	24	63.0	604 202 198
Trailer wheelspider	24	55.0	604 202 222
Trailer wheelspider	24	61.0	604 202 224

Further specifications on request

TRILEX[®]-Wheelspiders for single tyres

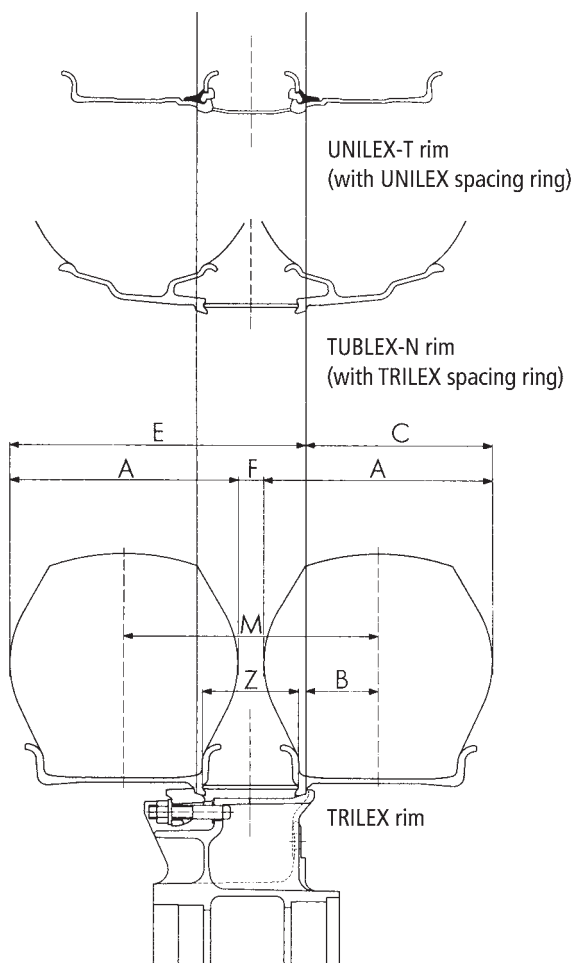


Type	Size inch	Weight kg	Order no.
Trailer wheelspider	20	36.0	604 202 201
Trailer wheelspider	20	35.5	604 202 223

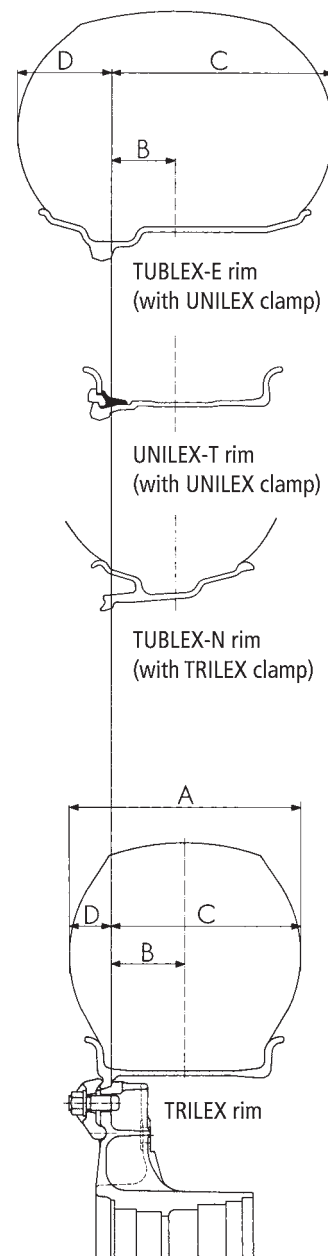
Further specifications on request

Tyre/Rim Allocation

TRILEX[®]-Standard wheelspider for twin tyres



TRILEX[®]-Standard wheelspider for single tyre



All rims of TRILEX[®] wheel systems are designed for the capacity of the corresponding respective tyre. For the tyre carrying capacity and the permissible speed, please refer to the manual of your manufacturer.

TRILEX[®]-rims for tubed tyres

Size inch	Tyre	Rim	A mm	B mm	C mm	D mm	E mm	F mm	Z mm	M mm
20"	12.00 R 20	8.5-20	313	98.5	255.0	58.0	414.0	43	139	356
20"	13/80 R 20	8.5-20	321	98.5	259.0	62.0	426.0	43	147	364
24"	12.00 R 24	8.5-24	313	98.5	255.0	58.0	414.0	43	139	356

Further specifications on request

TUBLEX[®]-G-rims/TUBLEX[®]-N-rims for tubeless tyres

Size inch	Rim	A mm	B mm	C mm	D mm	E mm	F mm	Z mm	M mm
22.5"	22.5 x 7.50	254	86.5	213.5	40.5	342.5	48	109	302
22.5"	22.5 x 7.50	255	86.5	214.0	41.0	343.0	47	109	302
22.5"	22.5 x 7.50	267	86.5	220.0	47.0	354.0	40	114	307
22.5"	22.5 x 7.50	268	86.5	220.5	47.5	354.5	39	114	307
22.5"	22.5 x 7.50	271	86.5	222.0	49.0	361.0	41	119	312
22.5"	22.5 x 8.25	275	92.0	229.5	44.5	363.5	43	114	318
22.5"	22.5 x 8.25	276	92.0	230.0	46.0	369.0	47	119	323
22.5"	22.5 x 8.25	279	92.0	231.5	47.5	375.5	49	124	328
22.5"	22.5 x 8.25	290	92.0	237.0	53.0	387.0	44	130	334
22.5"	22.5 x 8.25	291	92.0	237.5	53.5	387.5	43	130	334
22.5"	22.5 x 8.25	292	92.0	238.0	54.0	388.0	42	130	334
22.5"	22.5 x 9.00	298	98.5	247.5	50.5	397.5	49	130	347
22.5"	22.5 x 9.00	300	98.5	248.5	51.5	398.5	47	130	347
22.5"	22.5 x 9.00	305	98.5	251.0	54.0	401.0	42	130	347
22.5"	22.5 x 9.00	312	98.5	254.5	57.5	413.5	44	139	356

Further specifications on request

Rims

TRILEX[®]-wide base rims

Segmented rim for tyres with tubes for mounting on TRILEX[®] wheelspiders.



Size inch	Type	Weight kg	Replacing	Order No.
20"	8.5-20	38.5	81T850	650 410 355
24"	8.5-24	46.5	81T854	650 410 357

Further specifications on request

TUBLEX[®]-N-drop centre rims (tubeless)

15°-drop centre rim for tubeless tyres for mounting on TRILEX[®] wheelspiders. Made of rolled strip steel.

Fastening parts: The same fastening parts (clamps, bolts, spacing ring, etc.) can be used for TUBLEX[®]-N rims as are used for TRILEX[®] rims.



Size inch	Type	Weight kg	Order No.
22.5"	22.5 x 7.50	33.5	650 511 833
22.5"	22.5 x 8.25	36.0	650 511 836
22.5"	22.5 x 9.00	36.0	650 511 839

Further specifications on request

Spacing rings

for TRILEX[®]-rims



Size inch	Type	Width	Weight kg	Replacing	Order no.
20"	Spacing ring	114	7.6	656102040	656 062 040
20"	Spacing ring	130	8.3	656042046	656 062 046
20"	Spacing ring	139	8.7	656042049	656 062 049
24"	Spacing ring	130	10.7	656042446	656 062 446
24"	Spacing ring	139	11.2	656042449	656 062 449
24"	Spacing ring	147	11.7	656042451	656 062 451

Further specifications on request

Clamps

for TRILEX[®]- and TUBLEX[®]-rims



Type	Weight kg	Order no.
Clamp	0.660	659 002 193
Clamp	0.700	659 002 201
Clamp	0.850	659 002 215
Clamp	0.860	659 002 216
Clamp	0.500	659 002 101
Clamp	0.520	659 002 098
Clamp	0.550	659 002 074
Clamp	0.600	659 002 169
Clamp	1.400	659 002 114
Clamp	0.725	659 002 117
Clamp	0.926	659 002 141

for UNILEX[®]- and TUBLEX[®]-E-rims (double cone)



Type	Weight kg	Order no.
Clamp	0.600	659 002 199
Clamp	0.650	659 002 224
Clamp	0.430	659 002 069
Clamp	0.473	659 002 136

for single tyre 15" wheelspiders



Type	Weight kg	Order no.
Clamp	0.500	659 002 182
Clamp	0.630	659 002 053

Clamps

for 20"-wheelspiders and wheel adaptors



Type	Weight kg	Order no.
Clamp	0.650	659 002 171
Clamp	0.850	659 002 212
Clamp	1.250	659 002 161

for 24"-wheelspiders and wheel adaptors



Type	Weight kg	Order no.
Clamp	0.650	659 002 171
Clamp	0.670	659 002 129

for 20"-wheel adaptors with parts no. 604 260 070/...074/...076/...078



Type	Weight kg	Order no.
Clamp	0.630	659 002 126
Clamp	0.610	659 002 153

for 15"-wheelspiders



Type	Weight kg	Order no.
Clamp	0.640	659 002 180

Bolts

TRILEX[®]-cup head bolt M18 x 2



Type	Shaft length mm	Weight kg	Replacing	Order no.
M18 x 2	48	0.130	12485	659 112 477
M18 x 2	52	0.144	12486	659 112 468
M18 x 2	55	0.148	12497	659 112 438
M18 x 2	60	0.154	59T46, 12487	659 112 450
M18 x 2	65	0.170	59T47, 12488	659 112 451
M18 x 2	70	0.177	12489	659 112 448
M18 x 2	75	0.184	59T48	659 112 452
M18 x 2	80	0.192	59T54, 12490	659 112 453
M18 x 2	95	0.218	59T49, 12491	659 112 454
M18 x 2	110	0.248	59T59, 12492	659 112 455
M18 x 2	125	0.274	59T60, 12493	659 112 456
M18 x 2	140	0.296	59T61	659 112 457
M18 x 2	155	0.320	59T62	659 112 444

TRILEX[®]-bolt M20 x 2



Type	Shaft length mm	Weight kg	Replacing	Order no.
M20 x 2	57	0.200	12504, 112615	659 112 616
M20 x 2	80	0.245	12509	659 112 617
M20 x 2	100	0.293	12502	659 112 611
M20 x 2	115	0.324	12501	659 112 612
M20 x 2	130	0.358	12503	659 112 613
M20 x 2	145	0.394	12508	659 112 614

Nuts and sundries for TRILEX[®]-wheels

Flange nut (3 cams) for TRILEX[®]-bolt M20



Type	Model	order no.
Flange nut	M20 x 2	659 115 304

Flange nut (6 cams) for TRILEX[®]-cup head bolts and TRILEX[®] M18 bolts



Type	Replacing	Model	Order no.
Flange nut	78T08, 151-12	M18 x 2	659 115 300

Washer



Type	Model	Order no.
Washer	34 x 20 2.5	659 120 228

Safety pin



Type	Order no.
Safety pin	659 130 017

Valves for TUBLEX[®]- and UNILEX[®]-rims

Valve for hole 10 (9.7) mm – Type: straight



Type	Suitable for rim	Order no.
41 MS/9.7	TUBLEX 11.75 – 650 511 905	659 142 048

Valve for hole 10 (9.7) mm – Type: curved



Type	Suitable for rim	Order no.
102 MS/9.7	TUBLEX-N 7.50 – 650 511 833	659 142 043
119 MS/9.7	TUBLEX-N 8.25 – 650 511 836	659 142 044
133 MS/9.7	TUBLEX-N 9.00 – 650 511 839	659 142 045
80 MS/9.7	TUBLEX-N 7.50 – 650 511 911	659 142 056
80 MS/9.7	TUBLEX-N 8.25 – 650 511 914	659 142 056
80 MS/9.7	TUBLEX-N 9.00 – 650 511 913	659 142 056

Valve for hole 20.5 mm – Type: straight



Type	Suitable for rim	Order no.
120 MSF/20.5/C4	UNILEX 10.00V – 650 311 235	659 142 029
120 MSF/20.5/C4	UNILEX-T 8.50 – 650 311 231	659 142 029

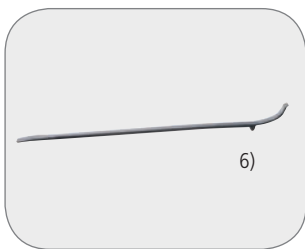
Tools

for mounting of TRILEX[®]-rims



Item	Type	Weight kg	Order no.
1	Rim assembling lever	0.8	659 800 006
2	Rim dismantling lever	1.0	659 800 007
3	Combination lever	3.1	659 800 008
4	Dismantling device for 20"-24"	9.2	659 801 006

for mounting TUBLEX[®]-G- and N-rims



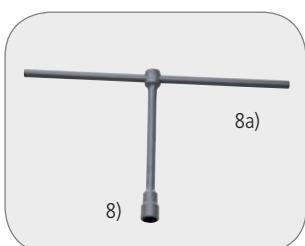
Item	Type	Weight kg	Order no.
6	Mounting lever (2 pieces)	2.0	659 800 000

for mounting of TUBLEX[®]-E-rims



Item	Type	Weight kg	Order no.
7	Double-ended lever	2.0	659 800 000

for assembly of wheelspiders and rims



Item	Type	Weight kg	Order no.
8	Socket wrench	1.2	659 800 038
8a	Mandrel	1.2	659 800 039



SAF's history begins in 1881 in a village forge in Germany with the invention of a new plough. The family business soon starts building steel axles for agricultural vehicles, and under the name Otto Sauer Achsenfabrik (SAF) develops into one of the leading manufacturers of trailer axles and suspension systems in Europe.

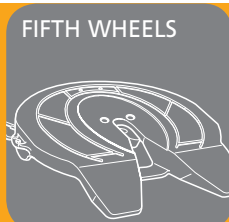
A safety coupling between plough and horse team can be found at the beginning of Holland's history. The Safety Release Clevis Company was founded in South Dakota, USA, in 1910. After its move to Holland, Michigan, the company emerges as one of the largest supplier companies to the commercial vehicles industry under the name The Holland Hitch Company.

The merger of the two companies to form SAF-HOLLAND in 2006 creates one of the leading global suppliers of high-quality components and services for the commercial vehicle industry. Alongside axle and suspension systems for trailers and semi-trailers, the product range also includes kingpins and landing gear as well as fifth wheels for tractors, air suspensions, coupling products and numerous other components for buses and trucks.

In 2008, SAF-HOLLAND takes over Georg Fischer Verkehrstechnik, a leading supplier to the commercial vehicle industry, expanding its product range with GF fifth wheels and kingpins as well as the TRILEX wheel system and accessories for tractors, semitrailers and trailers.

Today the SAF-HOLLAND group is represented on all continents and distributes its products and services worldwide under the brand names SAF and HOLLAND as well as GF, TRILEX and NEWAY. It possesses its own distribution network with global service and dealer locations.

HIGH QUALITY COMPONENTS AND SYSTEMS FOR THE COMMERCIAL VEHICLE INDUSTRY



EUROPE · NORTH AMERICA · SOUTH AMERICA · AFRICA · ASIA · AUSTRALIA

SAF-HOLLAND GmbH

Hauptstraße 26 · 63856 Bessenbach · Germany · Tel +49 6095 301-0

www.safholland.com

