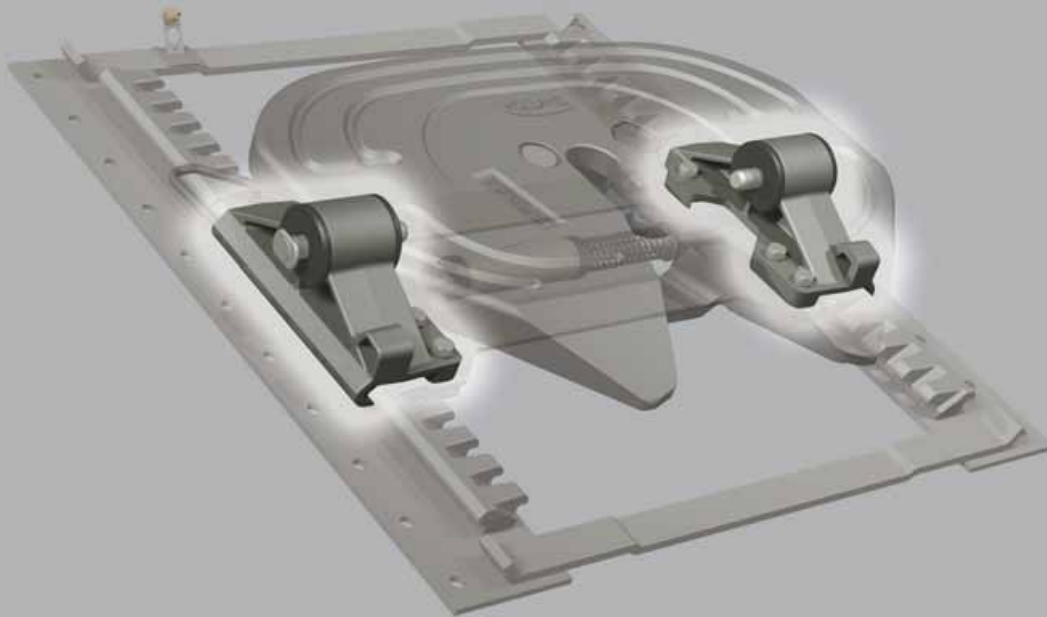


## Bracket Exchange Program & Replacement Procedures

For Fifth Wheel Stationary & Slider Mounting Brackets



XL-AM114 Rev A

## Purpose

To provide for easy, low cost stationary and sliding fifth wheel bracket exchange for new tractors when a change in fifth wheel height is required. For example, if there is a change in the specification that lowers the trailer upper coupler height and for proper vehicle operating conditions, it may be necessary to lower the fifth wheel height to keep the overall height of the vehicle within legal limits.

## Program Details

- This program is provided — **at no cost, unless the bracket list prices differ** — exclusively to franchised truck dealers for new tractors not yet licensed or put into service.
- Includes standard stationary and sliding fifth wheel brackets only — not customer special order brackets.
- Bracket exchange tables providing specific bracket exchange feasibility options are found on page 3 and 4 of this booklet.
- Step-by-step replacement procedures are provided in this booklet.

## Exchange Procedures

1. The dealer contacts the nearest SAF-HOLLAND customer service representative at 1-888-396-6501 to request a bracket exchange and to provide current and new fifth wheel bracket specifications.
2. SAF-HOLLAND will issue a "Return Goods Authorization" number (RGA #).
3. Dealer issues a purchase order for the new brackets. New mounting hardware is recommended. All hardware is available from SAF-HOLLAND by ordering kit #PK-FAST-10 for stationary bracket replacement. No additional hardware is required for sliders.
4. SAF-HOLLAND ships new brackets "freight collect", and will invoice at current pricing.
5. Dealer returns improper height brackets freight pre-paid—noting the RGA # on the bill of lading.
6. When returning brackets, they must be cleaned, the old paint removed, painted black, and returned in reusable condition. If this process is not followed, there will be a \$50.00 reconditioning charge.
7. Upon receipt of the old, improper height brackets, credit is issued at current pricing.

## General Safety Information

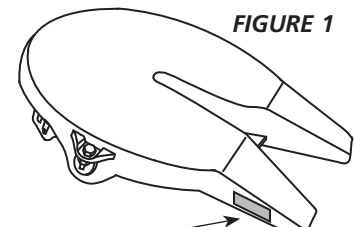
It is important to read, understand, and follow the important information contained in these replacement procedures. Failure to do so may result in a hazardous condition or cause a hazardous condition to develop.

All welding should be performed by an AWS certified welder using a low hydrogen process and AWS E70XX filler metal. Failure to weld correctly may cause distortion, damage, and/or result in insufficient strength and subsequent joint failure which, if not avoided, could result in death or serious injury.

Prior to welding take precautions to ensure that the tractor electrical system is not damaged due to the welding process.

## Bracket Identification

All of the information needed to determine your current fifth wheel bracket style and height is included in the fifth wheel model number printed on the serial number tag attached to the driver side pick-up ramp of the fifth wheel (**FIGURE 1**). The first two digits after the series number identify your bracket.



**FIGURE 1**

Serial Number and Model Number Tag is located on the Driver-Side "Pick-up Ramp" of the Fifth Wheel

MODEL NO.	MFG. DATE/SER. NO.
FW --XX--	A981234H
These two digits identify your current fifth wheel bracket style and height.	Height (approx.)
	6 = 6" (stationary only)
	7 = 7"
	8 = 8"
	9 = 9"
	Mounting Style
	<b>Slider</b>
	A = Outboard
	B = Inboard (serrated edge)
	C = Inboard (straight edge)
	<b>Stationary</b>
	Z = Plate Mount (formerly 788X)
	Y = Foot Mount (formerly 780X)
	X = Bracket Casting Only (formerly 782X)
	W = Bracket w/4" Vertical Leg Angle (formerly 781X)
	V = Bracket w/5" Vertical Leg Angle

## Bracket Replacement Guidelines

### Stationary Brackets:

Replace the entire mounting bracket assembly, including new attachment bolts, to the outboard angle. Bolt replacement is required. Order PK-FAST-10.

### Traditional (Old Style) Slider Brackets:

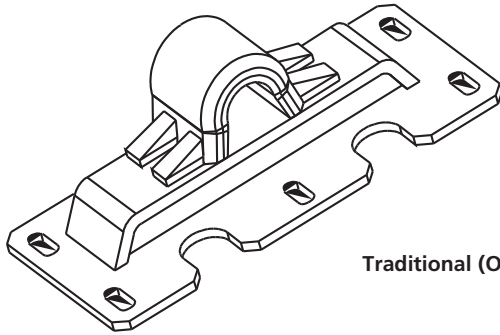
Replace only the bracket assembly—the slide base is not removed from the mounting angles. Slide bracket replacement requires removal of the old slide stops, and welding of the new slide stops (bolted hardware is not used). A proper welding procedure is required.

### ILS Slider Brackets:

Replace only the brackets—the slider base is not removed from the mounting angles. New bracket connection hardware is included in the ILS bracket kit.

## Stationary Brackets

Brackets included within each of the following tables are interchangeable. Brackets are **not** interchangeable from table to table.

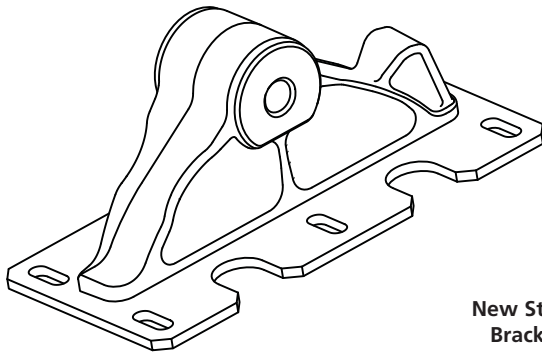


Traditional (Old Style) Brackets

### TRADITIONAL (OLD STYLE) BRACKETS

Old Fifth Wheel Model Number	Bracket Part Number	Height*
FW ___-7804___	XA-7804	5.69"
FW ___-7803___	XA-7803	6.69"
FW ___-7802___	XA-7802	7.69"
FW ___-7801___	XA-7801	8.69"

\* Height of the fifth wheel from the tractor frame to the top of the fifth wheel plate when level.

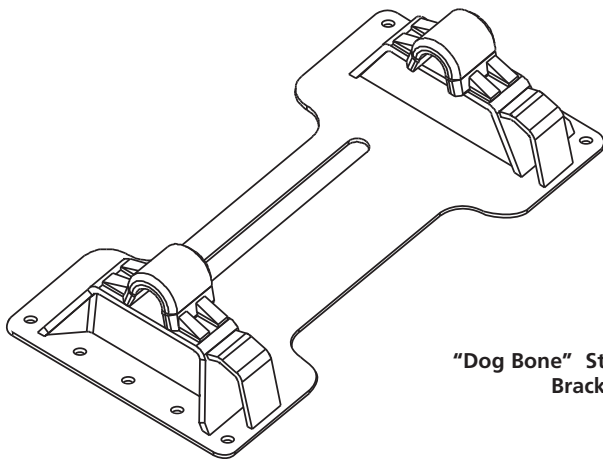


New Style Brackets

### NEW STYLE BRACKETS

New Fifth Wheel Model Number	Bracket Part Numbers	Height*
FW ___-Y600___	XA-Y600-XL XA-Y600-XR	5.625"
FW ___-Y700___	XA-Y700-XL XA-Y700-XR	6.625"
FW ___-Y800___	XA-Y800-XL XA-Y800-XR	7.625"
FW ___-Y900___	XA-Y900-XL XA-Y900-XR	8.625"

\* Height of the fifth wheel from the tractor frame to the top of the fifth wheel plate when level.



"Dog Bone" Style Brackets

### "DOG BONE" STYLE BRACKETS

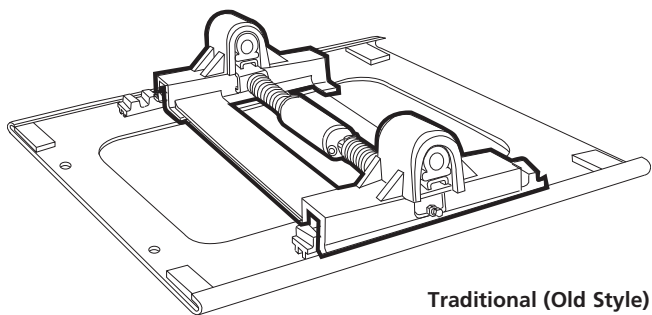
Old Fifth Wheel Model Number	Bracket Part Number	Height*
FW ___-7886___	XA-7886	5.69"
FW ___-7885___	XA-7885	6.69"
FW ___-7884___	XA-7884	7.69"
FW ___-7883___	XA-7883	7.69"
New Fifth Wheel Model Number	Bracket Part Number	Height*
FW ___-Z600___	XA-Z600-X	5.625"
FW ___-Z700___	XA-Z700-X	6.625"
FW ___-Z800___	XA-Z800-X	7.625"
FW ___-Z900___	XA-Z900-X	8.625"

\* Height of the fifth wheel from the tractor frame to the top of the fifth wheel plate when level.

## Slider Brackets

**NOTE 1:** The 7.00" air release slider brackets are longer than the higher brackets and will **reduce available slide travel**.

**NOTE 2:** Also, if a 7.00" bracket is replaced with a higher bracket, the slide travel will increase and may **create trailer to tractor cab interference problems**.

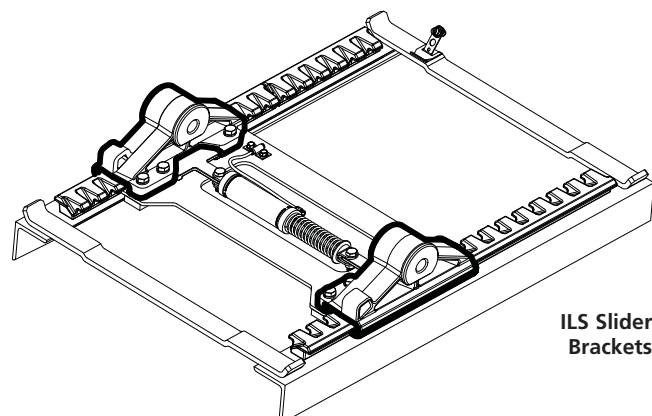


Traditional (Old Style)  
Slider Brackets

### TRADITIONAL (OLD STYLE) BRACKETS

Old Fifth Wheel Model Number	Bracket Part Number	Release Style	Height*
FW __ -7001 __ FW __ -8001 __	XA-7001	AIR	9.00"
FW __ -7002 __ FW __ -8002 __	XA-7002	AIR	8.00"
FW __ -7003 __ FW __ -8003 __	XA-7003	AIR	7.00"
FW __ -7301 __ FW __ -8301 __	XA-7301	AIR	8.50"
FW __ -7009 __ FW __ -8009 __	XA-7009	AIR	10.50"

\* Height of the fifth wheel from the tractor frame to the top of the fifth wheel plate when level.



ILS Slider  
Brackets

### ILS SLIDER BRACKETS

New Fifth Wheel Model Number	Bracket Part Number	Height*
FW ____ A7 ____	RK-10689-1	7.00"
FW ____ A8 ____	RK-10689-2	8.00"
FW ____ A9 ____	RK-10689-3	9.00"

\* Height of the fifth wheel from the tractor frame to the top of the fifth wheel plate when level.

## Stationary Brackets

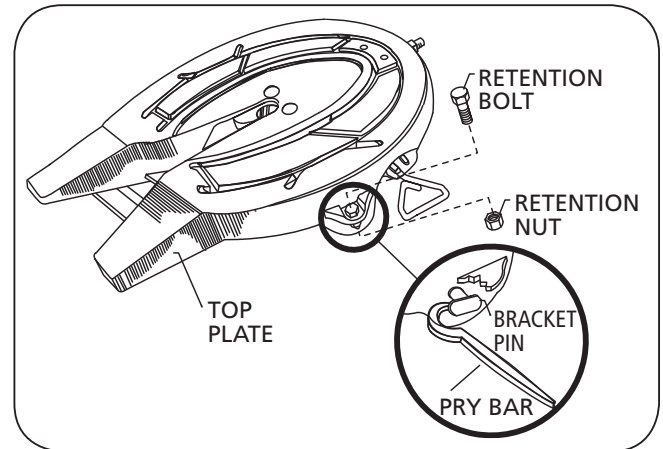
1. Remove the bracket pin retention bolts and nuts from the top plate (**Figure 2**).
2. Using a pry bar, pull the bracket retention pins out of the fifth wheel top plate (**Figure 2**).
3. Using a proper lifting device, remove the top plate from the brackets and set aside.

**CAUTION**

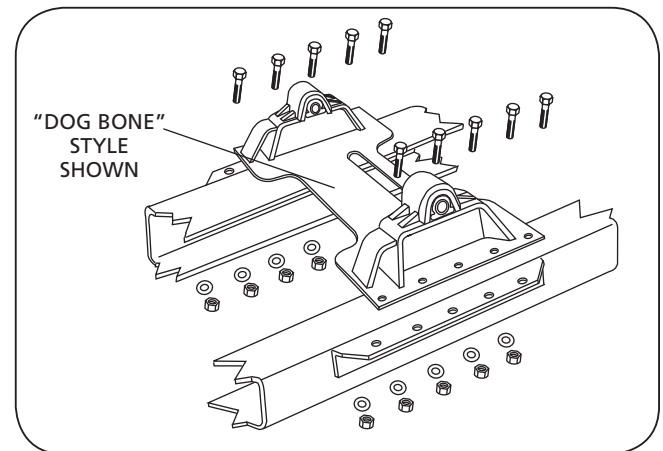
Fifth wheel top plate and mounting brackets are heavy. Be sure to use a proper lifting and securing device to prevent the component from falling during the removal process.

4. Remove the stationary bracket mounting bolts and remove the incorrect height stationary brackets (**Figure 3**).
5. Position the new stationary brackets over the holes in the tractor frame and/or mounting angles.
6. USING NEW MOUNTING BOLTS, NUTS and WASHERS, attach the new mounting brackets to the tractor. Use 5/8" diameter, grade 8 minimum bolts properly torqued to bolt manufacturer's charts. Use hardened steel washers and grade "C" lock nuts (**Figure 3**).
7. Thoroughly grease the tops of the bracket caps and position the fifth wheel back on the brackets (**Figure 4**).
8. Insert the bracket pins and re-attach the bracket pin retention bolts and nuts and securely tighten.

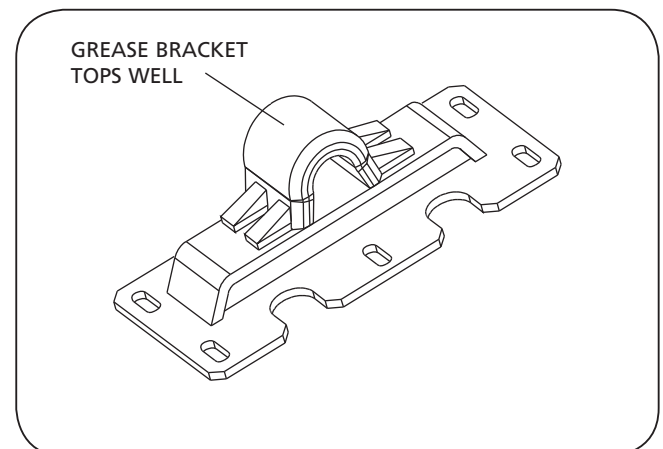
**Figure 2**



**Figure 3**



**Figure 4**



## Traditional Slider Bracket Replacement

**IMPORTANT:** Prior to proceeding with the installation of the slider fifth wheel assembly, carefully review the "General Safety Information" section on page 2.

1. Remove the bracket pin retention bolts and nuts from the top plate (**Figure 5**).
2. Using a pry bar, pull the bracket retention pins out of the fifth wheel top plate (**Figure 5**).
3. Using a proper lifting device, remove the top plate from the brackets and set aside.

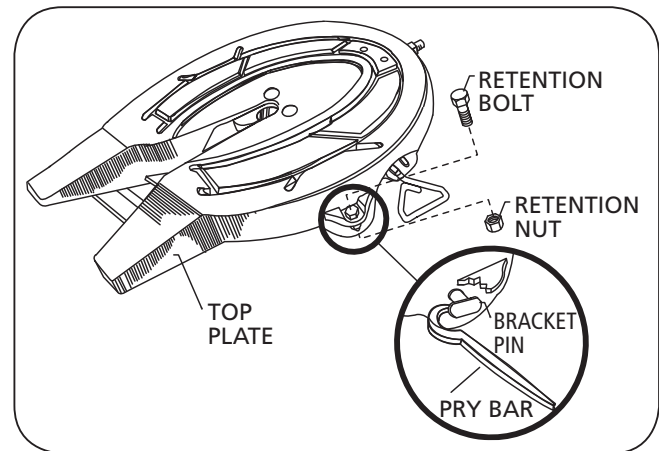
**CAUTION**

Fifth wheel top plate and mounting brackets are heavy. Be sure to use a proper lifting and securing device to prevent the component from falling during the removal process.

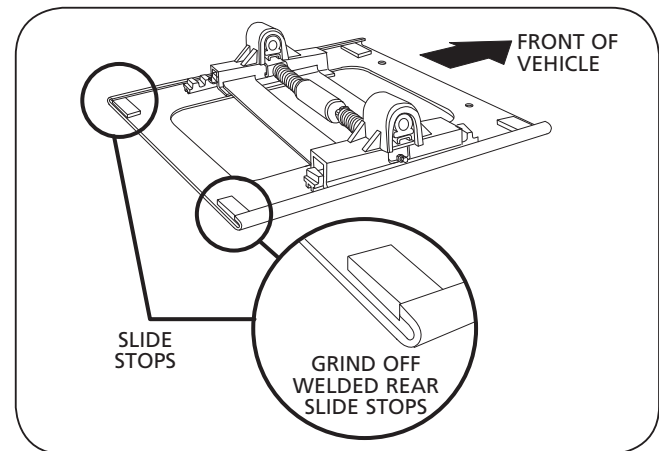
4. Grind off the welds from the two rear slide stops on the slide plate and remove the slide stops (**Figure 6**). Save slide stops for re-installation.
5. Disconnect the air supply line for the air cylinder on the slide bracket at the bulkhead fitting at the front of the side plate.
6. Using a shop air line, provide air pressure to the slider bracket air cylinder line so that the slider plungers disengage.
7. Slide the slider bracket back until the plungers clear the slider rack, then disconnect the air supply.
8. Remove the slider bracket.
9. Position new slider bracket on slide plate (**Figure 7**):  
Make sure the air port is facing the tractor cab. Then, supply shop air to disengage the slider plungers, and slide the bracket to the full rear position on the slider plate. Remove the shop air supply and make sure the plungers properly engage in the slider rack. Now, reconnect the bracket air line to the slider plate bulkhead fitting.

*continued*

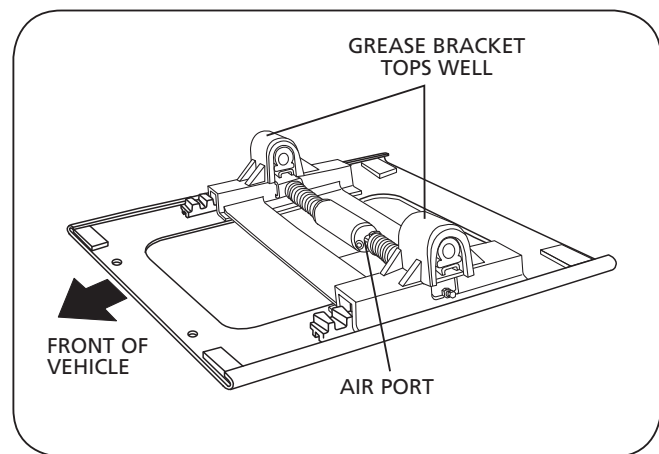
**Figure 5**



**Figure 6**



**Figure 7**



## Traditional Slider Bracket Replacement

*continued*

**IMPORTANT:** It is the responsibility of the installer to insure that slide stops are installed properly at all four corners of the slider plate. Be sure the slide bracket is in the full rear position on the slider rack with the plungers engaged.

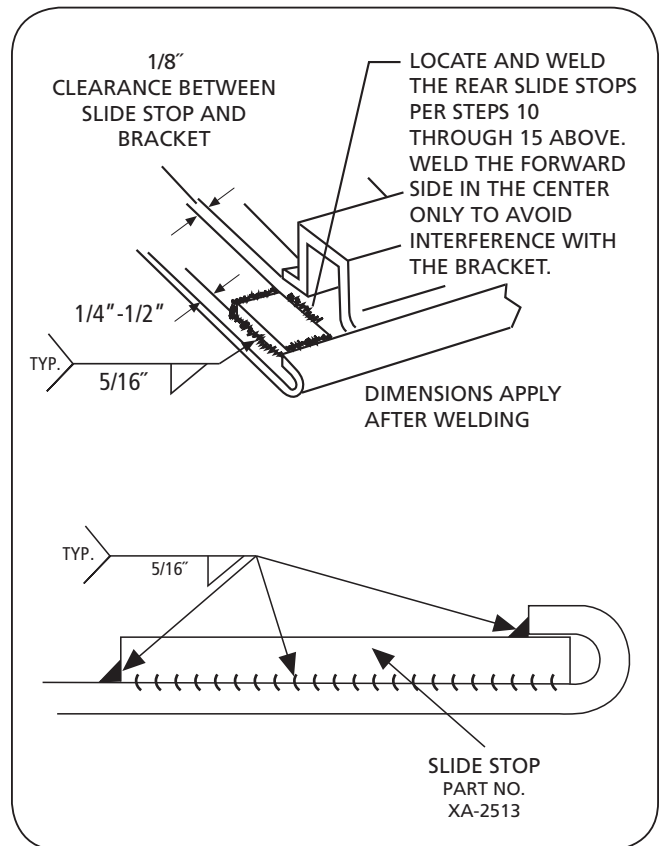
### 10. Re-install Slide Stops:

With the slider bracket in the full rear position and the plungers engaged in the slide rack, clamp the rear slide stops under the curled edge of the slide plate (**Figure 8**). Be sure to allow 1/8" of clearance between the slide stop and the slide bracket (**Figure 8**).

**NOTE:** This should position the slide stops approximately 1/4" to 1/2" from the edge of the rear of the slide plate (**Figure 8**).

11. Slide bracket ahead out of the way and weld the stops in place (**Figure 8**). The welds should be 5/16" fillet.
12. Slide the bracket to the full rear position and check for clearance. Make sure the plungers on the sliding bracket seat properly into the rack with all teeth engaged.
13. Repaint slide stops and surrounding area as required.
14. Thoroughly grease the tops of the bracket caps and position the fifth wheel back on the brackets.
15. Insert the bracket pins and re-attach the bracket pin retention bolts and nuts and securely tighten.

**Figure 8**



## ILS Slider Bracket Replacement

1. Remove the bracket pin retention bolts and nuts from the top plate as shown in **Figure 9**.
2. Using a pry bar, pull the bracket retention pins out of the fifth wheel top plate (**Figure 9**).
3. Using a proper lifting device, remove the top plate from the brackets and set aside.

**CAUTION** Fifth wheel top plate and mounting brackets are heavy. Be sure to use a proper lifting and securing device to prevent the component from falling during the removal process.

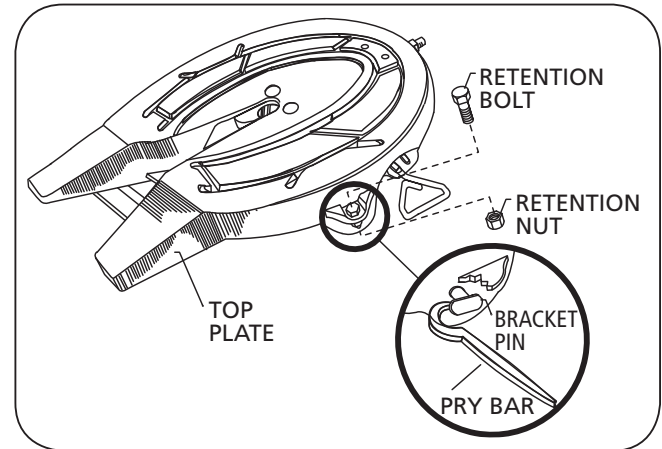
**NOTE:** For ease of disassembly and reassembly, it is recommended to replace one bracket at a time.

**CAUTION** Secure stop bar when removing hex screws to prevent it from falling off and causing injury or property damage.

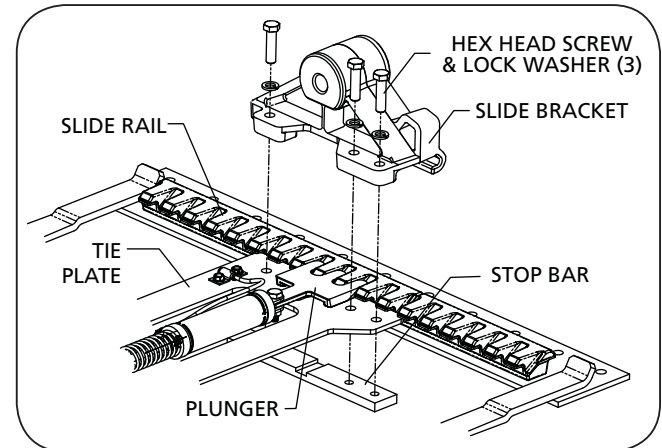
4. Remove three hex head screws from one of the brackets (**Figure 10**). Discard the old lock washers, used hex head screws, and the stop bar.
5. Place the new slide bracket on the slide base. Make sure the bracket wraps around the slide rail (**Figure 11**), and the holes in the tie plate align with the bracket.
6. Place a lock washer on each of the new hex head screws and slide the hex head screws through the holes in the bracket and tie plate (**Figure 10**).
7. With the cutout in the new stop bar facing upward toward the bracket, use your fingers to start threading the screw into the new stop bar (**Figure 10**).

*continued*

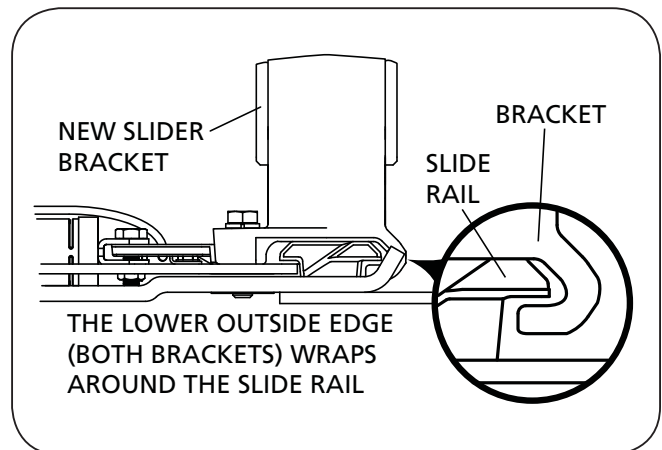
**Figure 9**



**Figure 10**



**Figure 11**



**ILS Slider Bracket Replacement** *(continued)*

8. After all three fasteners are threaded into the stop bars, position the brackets so that they are 34" apart when measured from the outside of the brackets (**Figure 12**).
9. Using the following sequence, torque each bolt to 195 ft. lbs. Torque middle bolt first then torque front bolt (opposite end of tilt stop), then rear bolt last. Repeat sequence for opposite bracket (**Figure 13**).

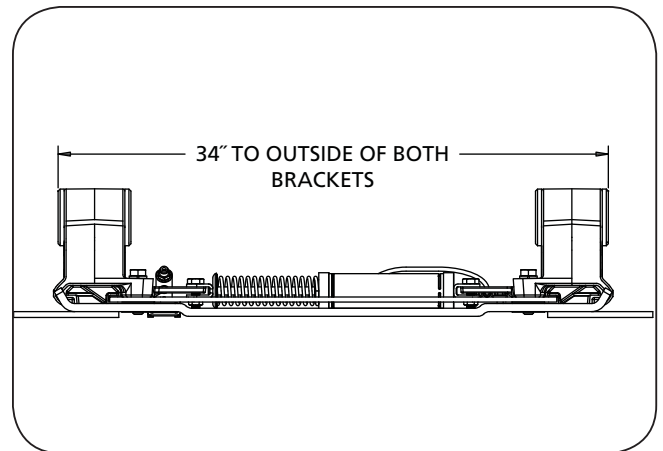
**⚠ WARNING** Failure to properly torque fasteners could result in serious injury or death.

10. Thoroughly grease the tops of the bracket and bracket pins; position the fifth wheel back on the brackets (**Figure 14**).

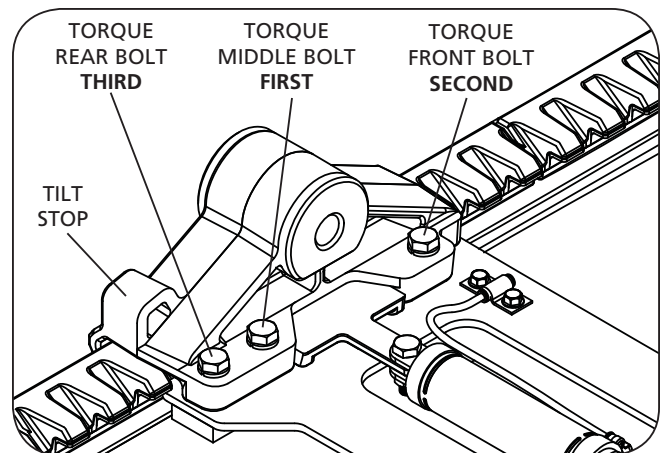
**IMPORTANT:** Torque requirements listed are for clean and lubricated threads.  
Use of special lubricants with friction modifiers, such as Anti-Seize or Never-Seize, without written approval from SAF-HOLLAND Engineering will void warranty and could lead to premature bolt failure or other component issues.

11. Insert the bracket pins and re-attach the bracket pin retention bolts and nuts—and securely tighten.

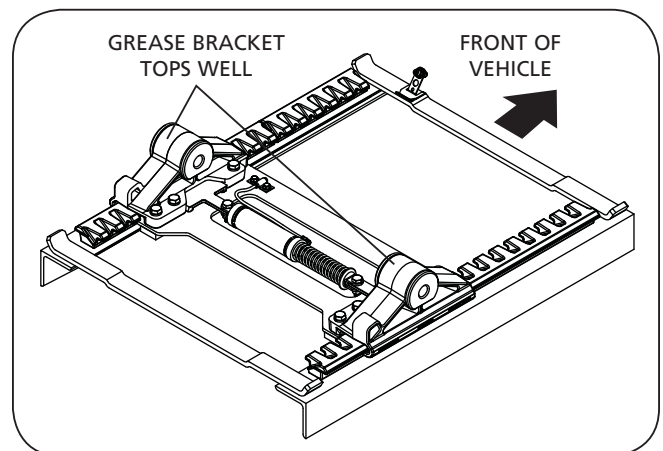
**Figure 12**



**Figure 13**



**Figure 14**





From fifth wheel rebuild kits to suspension bushing repair kits, SAF-HOLLAND Original Parts are the same quality components used in the original component assembly.

SAF-HOLLAND Original Parts are tested and designed to provide maximum performance and durability. Will-fits, look-alikes or worse yet counterfeit parts will only limit the performance potential and could possibly void SAF-HOLLAND's warranty. Always be sure to spec SAF-HOLLAND Original Parts when servicing your SAF, Holland or Neway product.

**SAF-HOLLAND USA · 888.396.6501 · Fax 800.356.3929**

[www.safholland.us](http://www.safholland.us)

**SAF-HOLLAND CANADA · 519.537.3494 · Fax 800.565.7753**

**WESTERN CANADA · 604.574.7491 · Fax 604.574.0244**

[www.safholland.ca](http://www.safholland.ca)

**SAF-HOLLAND MEXICO · 045.55.54568641 · Fax 52.1.55.58162230**

[www.safholland.com](http://www.safholland.com)

*(044.55.54568641 if within Mexico City)*

[info@safholland.com](mailto:info@safholland.com)