

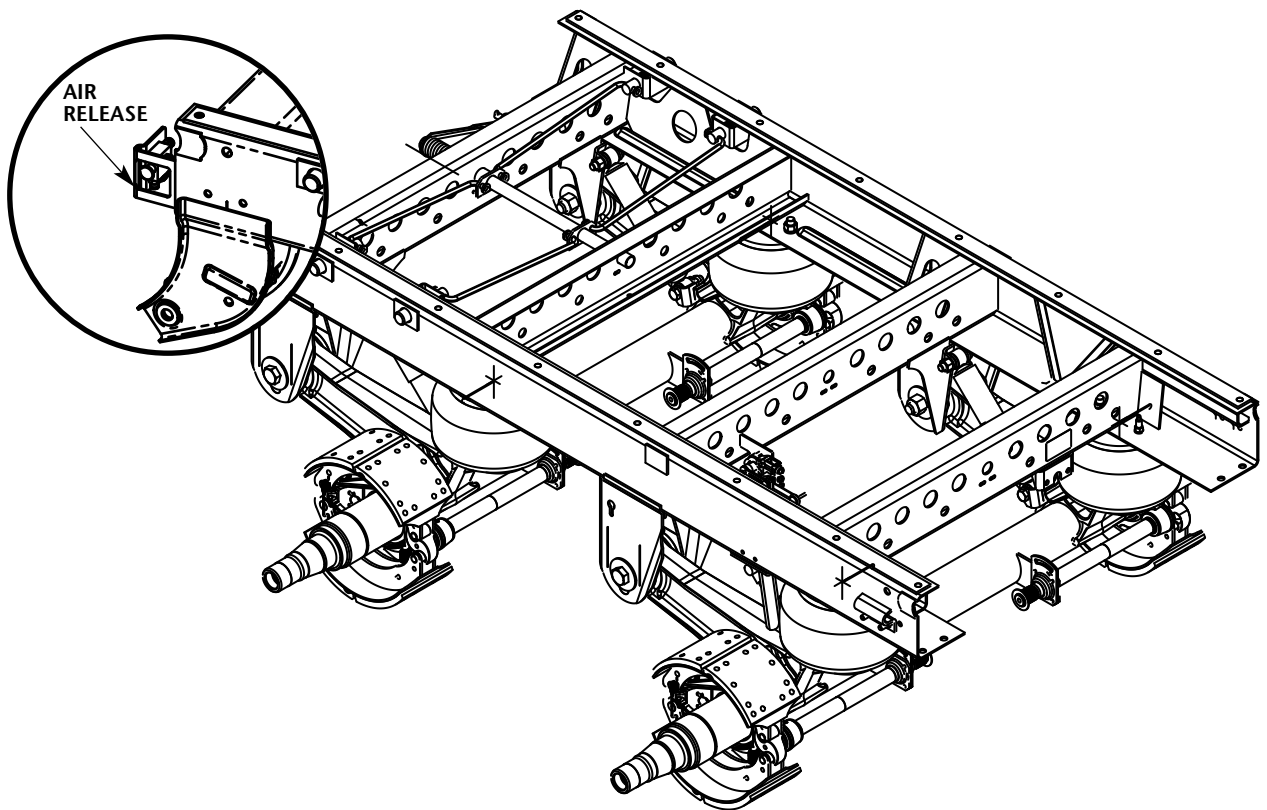


TRAILER

AIR RELEASE PIN PULL MECHANISM



CB4000 & Mechanical Trailer Suspensions Installation & Operation Procedures



Includes Parts Information

TABLE OF CONTENTS

Introduction.....	2
Warranty	2
Notes, Cautions, and Warnings.....	2
Installation Preparations	3
Installation	3

Plumbing Diagram	5
Parts List.....	5
Operating Instructions.....	6
Contact Information	8

INTRODUCTION

This manual provides you information necessary for the installation, adjustment, inspection, and safe operation of the Holland air release feature for Trailer Sliding Suspensions.

No more pulling. New Air release effectively retracts and engages slider pins with the pull of a knob. For added simplicity, the Air Release operates with a proven design air brake chamber just like current braking systems.

No training is required and faster slide relocation is enabled by the simple switch operation.

To adjust the slide, the driver must park on level ground and set all the brakes. The driver relocates the stop bar to the desired location and pulls out the Air Release knob located on the front of the slider. The air brake chamber then releases the pins and locks in the out position to allow movement. When pins have released the driver *slowly* repositions the tractor until slide contacts the manual stop bar. Set tractor brakes after positioning is complete. Push in the knob and pins automatically engage and lock into place.

The driver must check to ensure lock pins extend through upper rail. As an added measure of safety, the stop bar must be relocated 1 hole behind slider before operating the vehicle.

For added driver safety, the Air Release only works when the parking brake is set and is connected to the air supply with a valve to prevent draining.

Air Release is available on all models of Holland slides - new and retrofit. Optional manual back up also is available.

WARRANTY

Refer to the complete warranty for the country in which the product will be used. A copy of the written warranty is included with the product as well as in the suspension catalogs and on the Holland Group Web Site (www.thehollandgroupinc.com). It may also be ordered directly by calling 1-888-396-6501.

NOTES, CAUTIONS, AND WARNINGS

You must read and understand all of the safety procedures presented in this manual before starting any work on the suspension.

Proper tools must be used to perform the maintenance and repair procedures described in this manual. Many of these procedures require special tools.

Failure to use the proper equipment could result in personal injury and/or damage to the suspension.

Safety glasses must be worn at all times when performing the procedures covered in this manual.

Throughout this manual, you will notice the terms “NOTE,” “IMPORTANT,” “CAUTION” and “WARNING” followed by important product information. So that you may better understand the manual, those terms are as follows:

NOTE: Includes additional information to enable accurate and easy performance of procedures.

IMPORTANT: Includes additional information that if not followed could lead to hindered product performance.

CAUTION

Used without the safety alert symbol, indicates a potentially hazardous situation which, if not avoided, may result in property damage.

▲ CAUTION

Indicates a potentially hazardous situation which, if not avoided, may result in minor or moderate injury.

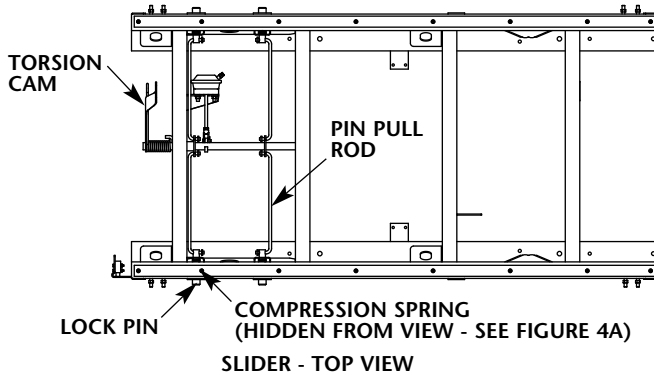
▲ WARNING

Indicates a potentially hazardous situation which, if not avoided, could result in death or serious injury.

INSTALLATION PREPARATIONS

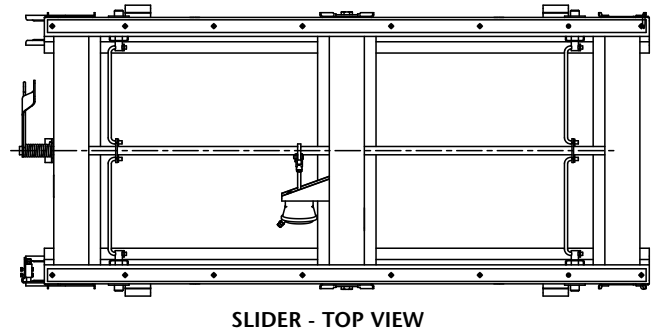
1. For ease of installation of the Air Release Kit, it is advisable to remove the slider/suspension from under the trailer. Follow the trailer manufacturer's slider/ suspension removal procedures or the suspension maintenance manual for the safe removal of the slider/suspension.

FIGURE 1
Air Ride Slider



2. If the trailer was equipped from the factory with an Air Release, refer to **FIGURE 1** and **FIGURE 2** for the appropriate configuration and location.

FIGURE 2
Mechanical Slider



INSTALLATION

The following instructions will provide you with the necessary information to accurately install the Air Release System on your slider.

1. After the slider/suspension is out from under the trailer, refer to Steps 2 - 6 for proper bracket locations.

NOTE: The pull handle must be removed from the slider prior to the Air Release installation.

2. Locate the Spring Brake Bracket and weld in place as shown in **FIGURE 3** for a CB-400/4000 suspension. If your trailer has a mechanical suspension locate the Spring Brake Bracket as shown in **FIGURE 4**.
3. Locate the Spring Brake Cam as shown in **FIGURE 3** and **FIGURE 3A** for the CB-400/4000 and tack weld in place. If you have a Mechanical Suspension, refer to **FIGURE 4** and **FIGURE 4A**.

NOTE: The spring brake actuator rod and clevis should be horizontal when attached for the CB-400/4000 Suspension. Pay close attention to the spring brake cam angle prior to finish welding. The cam pin must be lower than the tube for ease of rotation proper cam stroke for CB-400/4000 suspension.

FIGURE 3
Welding Spring Brake Cam Bracket (Air Ride)

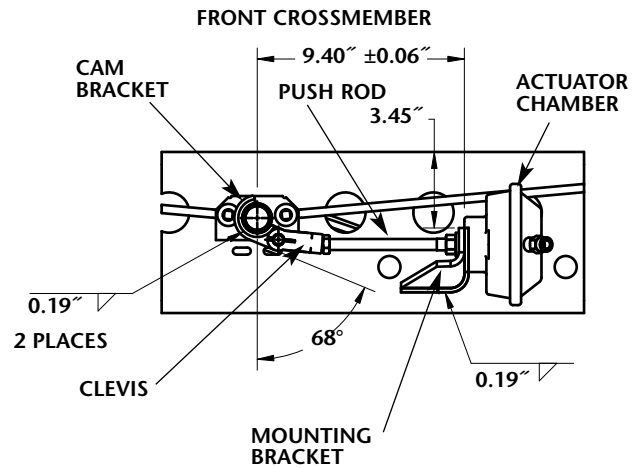
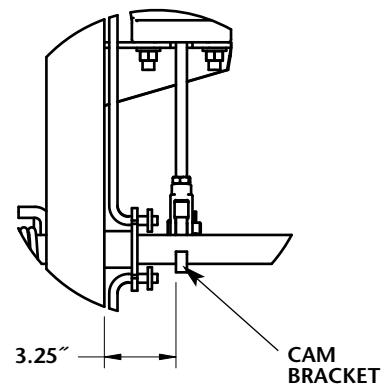


FIGURE 3A
Welding Spring Brake Cam Bracket (Air Ride)



INSTALLATION *continued*

FIGURE 4
Welding Spring Brake Cam Bracket (Mechanical)

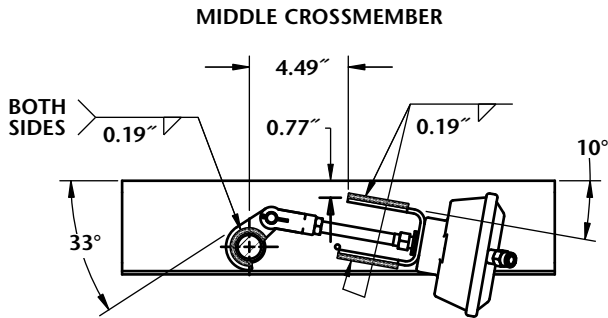
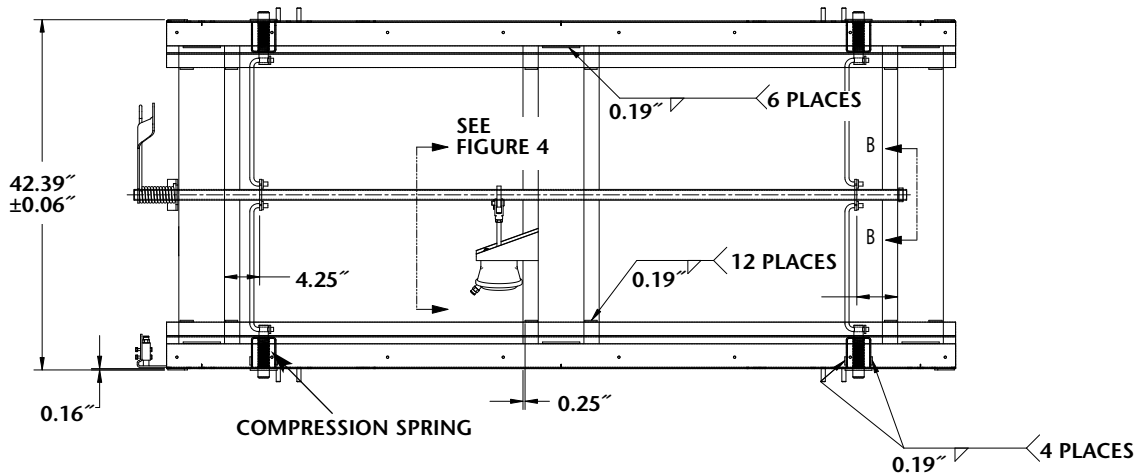
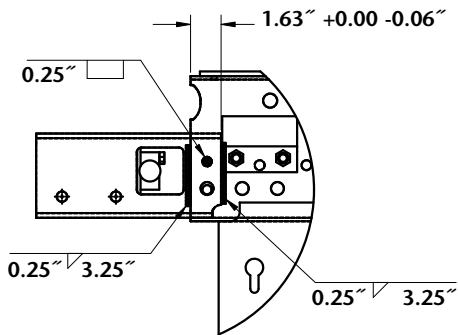


FIGURE 4A
Welding Spring Brake Cam Bracket (Mechanical)



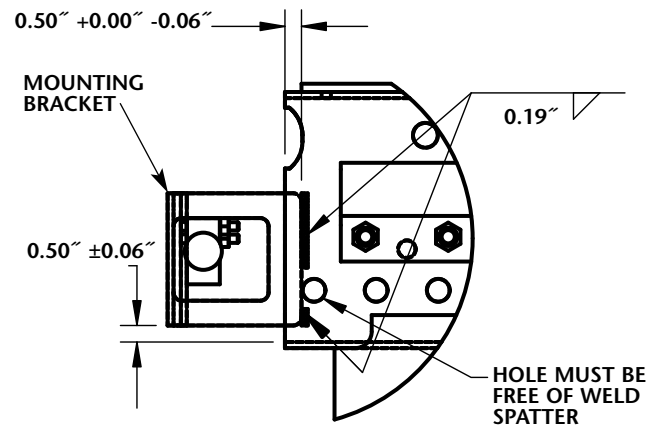
4. For the Mechanical Suspension notice the Spring Brake Bracket is at an angle and the Spring Brake Cam is located with the cam pin location on the top of the Torsion Cam Tube.
5. Locate the Valve Bracket as shown in **FIGURE 5** and **FIGURE 6**.

FIGURE 5
Locating Valve Bracket (1 of 2)



NOTE: For air release and stinger mounting bracket.

FIGURE 6
Locating Valve Bracket (2 of 2)

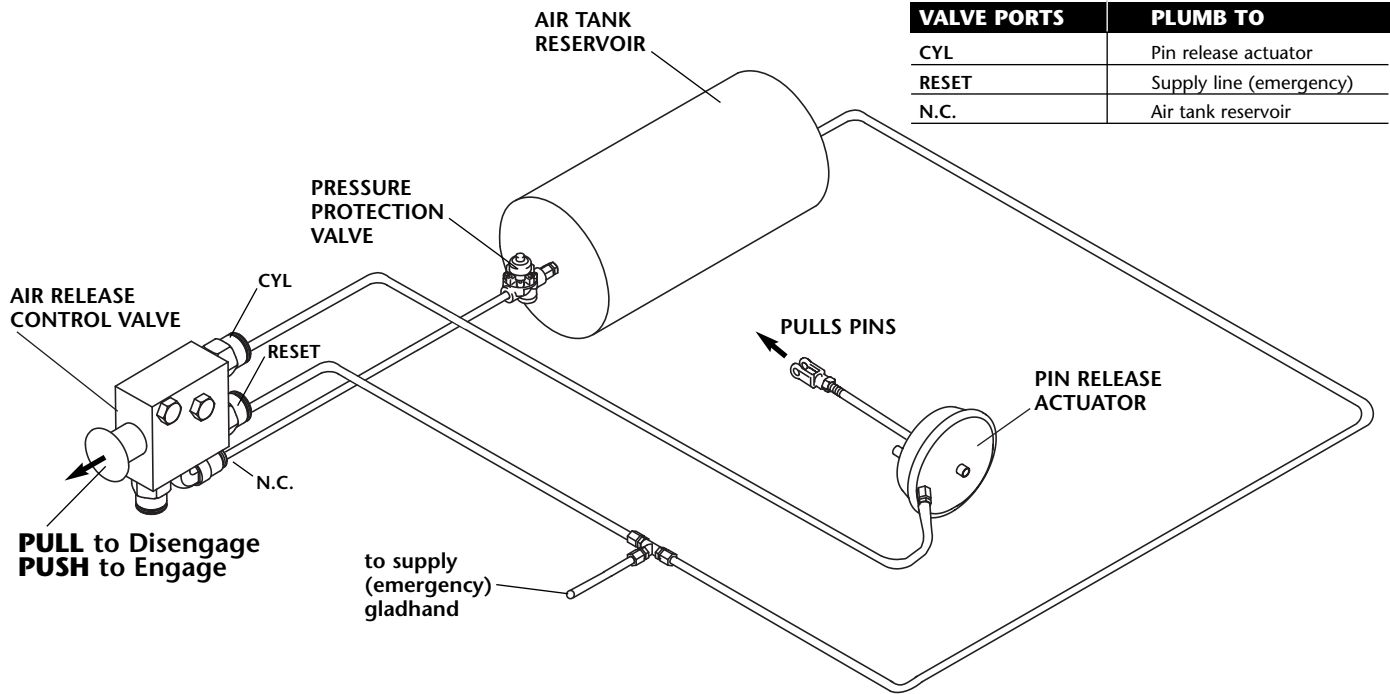


NOTE: For air release **without** stinger mounting bracket.

6. Install the Spring Brake Service Chamber, male connector and Air Release Valve. Refer to the Air Release Plumbing Diagram for proper plumbing.

PLUMBING DIAGRAM

FIGURE 7
Air Release Plumbing Diagram



Plumbing Connections

VALVE PORTS	PLUMB TO
CYL	Pin release actuator
RESET	Supply line (emergency)
N.C.	Air tank reservoir

PARTS LIST

Air Release Retrofit Kit Parts - SPK-0055

NS400, CB-400/4000

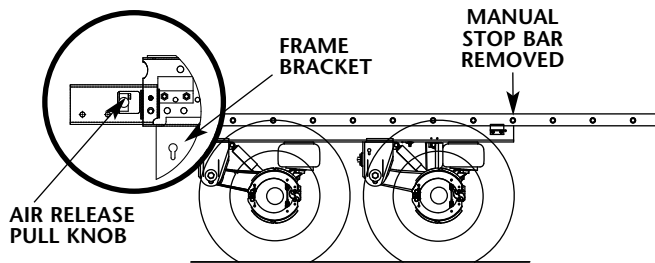
ITEM	DESCRIPTION	HOLLAND PART NO.	QTY.
1	Bracket, Valve	900 26 223	1
2	Cam, Spring Brake	900 45 547	1
3	Bracket, Spring Brake	900 26 227	1
4	Push, Pull, 3/2 with Air Pilot Reset	905 60 012	1
5	Spring Brake Service Chamber 9	905 48 040	1
6	Connector, Male, Push Connect	938 00 329	1
7	Literature Decal	XL-AR429	1
8	Retrofit Air Release Installation Drawing	SLOA1457	1
9	Air Release Plumbing Diagram	XL-AR438	1

OPERATING INSTRUCTIONS

Operating instructions to reposition sliding tandems.:

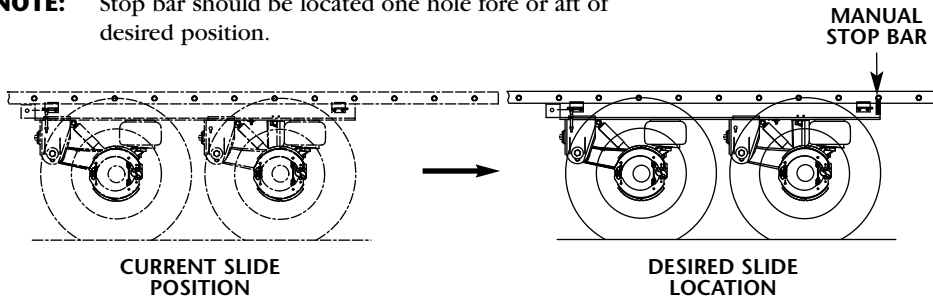
1. Do the following:
 - Park on level ground.
 - Set all brakes.
 - Exit cab and locate slider
 - **PULL** knob on the Air Release control valve.

NOTE: This will disengage the pins in the body rails.

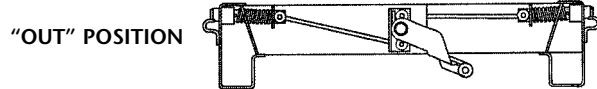
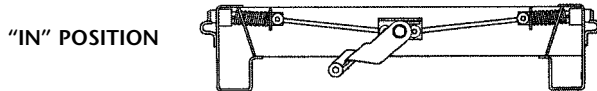


2. Position manual stop bar at desired location.

NOTE: Stop bar should be located one hole fore or aft of desired position.

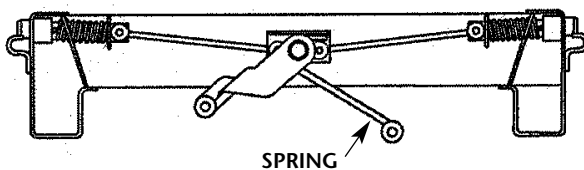


3. Check "in" position and "out" position of air release pins.



4. If pins release, proceed to Step 6.

NOTE: If pins **do not** release, proceed to Step 5 procedure.



OPERATING INSTRUCTIONS *continued*

5. Do the following:

- Be certain the vehicle is clear of people and obstructions.
- Release tractor brakes **only**.
- Gently rock tractor and trailer.
- Listen for pins to release.

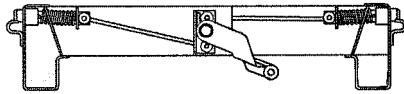
NOTE: The air actuator will automatically retract the lock pins when the pressure on the lock pins is released.

6. When pins have released - **slowly** reposition tractor until slide contacts the manual stop bar.

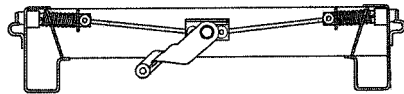
7. Do the following:

- Set tractor brakes after slide has been repositioned.
- Trailer parking brakes should still be engaged.
- Exit cab and walk back to slider.
- **PUSH** the Air Release control knob to engage the pins.

"IN" POSITION

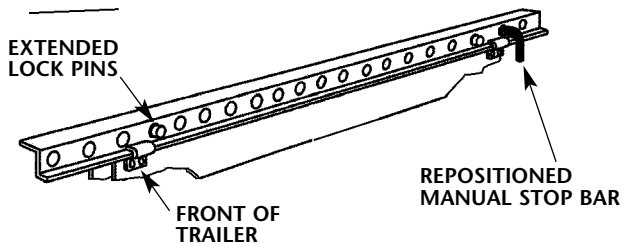


"OUT" POSITION



8. Do the following:

- Check to ensure lock pins extend through upper rail.
- As an added measure of safety, the stop bar **must** be relocated 1 hole aft of slider before operating the vehicle.
- After finishing the walk around safety check, you are ready to drive. Remember, always check that the lock pins are through the holes in the upper rail.





GO THE DISTANCE.

www.thehollandgroupinc.com

Copyright © June 2006 • The Holland Group, Inc.

Holland USA, Inc. Facilities:

Dumas, AR Muskegon, MI
Holland, MI Warrenton, MO
Monroe, NC Wylie, TX

Ph: 888-396-6501 Fax: 800-356-3929

Holland International, Inc.

Holland, MI
Phone: 616-396-6501
Fax: 616-396-1511

Holland Hitch of Canada, Ltd.

Woodstock, Ontario • Canada
Phone: 519-537-3494
Fax: 800-565-7753

Holland Equipment, Ltd.

Norwich, Ontario • Canada
Phone: 519-863-3414
Fax: 519-863-2398

Holland Hitch of Canada, Ltd.

Surrey, British Columbia • Canada
Phone: 604-574-7491
Fax: 604-574-0244