



SAF-HOLLAND Group

HOLLAND 50000 LANDING GEAR

A PREMIUM, HEAVY-DUTY LEADER. THE PROVEN STANDARD FOR THE LONG HAUL.





THE HOLLAND 50000. FEW OTHERS CAN COMPARE.

This is the heavy-duty leader, the one you choose when you want durability. Over a million rigs already rely on it. The 50000 is a lightweight, premium quality landing gear.

ENGINEERED TO PERFORM.

- Three-gear train gearbox with exclusive Man-Saver™ gear ratios handles normal loads with 40 percent less effort
- Exclusive E-Z shift option minimizes effort and maximizes productivity
- 80,000 psi minimum yield upper housing and retract tube maintains strength while saving weight
- High-strength ductile iron gears
- Positive gear shifting, easy shift option is available
- Exceeds all AAR M-931 and all TTMA RP-4 performance specifications
- Patented twin bulkhead floating nut reduces damage from dock walk and dramatically boosts side-load capacity
- SAF-HOLLAND's exclusive computer-controlled stress analysis system enables precise control of wall shape, gauge and yield

BACKED BY A LEVEL OF SERVICE YOU CAN ONLY GET FROM HOLLAND.

- Parts available on time, virtually anywhere
- Extensive and responsive network of distributors and warehouses
- Nationwide sales and service team means quick, dependable service

AND A SOLID WARRANTY FOR DOWN THE ROAD.

- Comprehensive five-year warranty

STANDARD FEATURES

Reliable, high-quality seal keeps water out and extends life.

Gearbox with low-temperature premium lube provides easy cranking and reduces component wear; protection from -65°F to 225°F.

Unique tapered backplate for enhanced durability.

Exclusive Floating Nut design for high side-load capacity and reduced dock-walk damage.

Massive, 5-inch upper housing with 80,000 psi minimum yield and retractable tube; maintains strength while saving weight. Lower leg is 12% larger than standard-duty landing gear.

50000 LANDING GEAR CAPABILITIES

Lifting Capacity – Rated	
100 ft. lbs. Input Torque	60,000 lbs.
Ultimate Load Capacity	170,000 lbs.
Side Load Capacity	29,000 lbs.

CRANK TURNS PER INCH

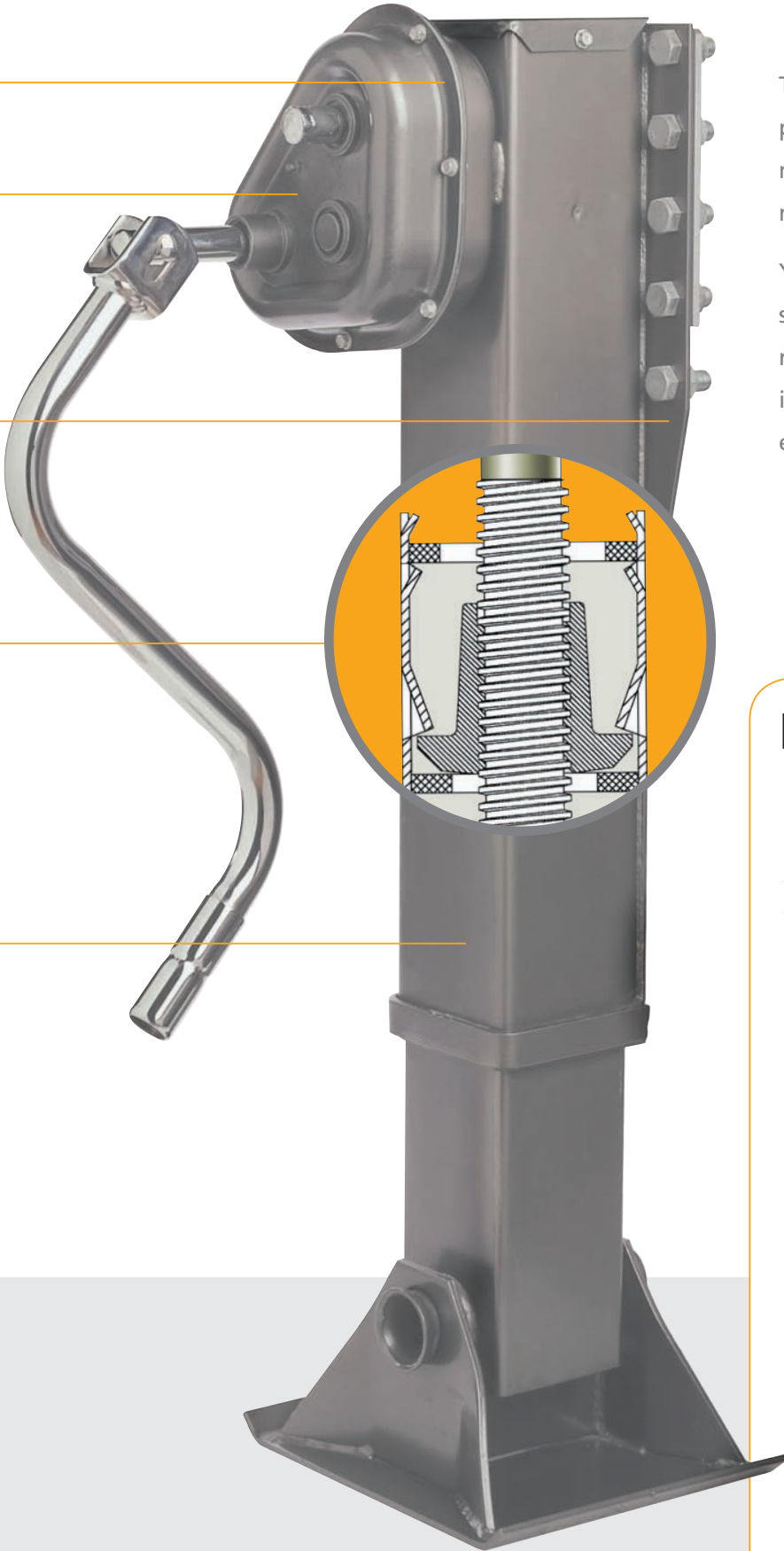
Low Gear	34.4
High Gear	4.5

All tests in accordance with AAR and TTMA recommended practice

NOLUBE[®] OPTION

The NoLube[®], low maintenance technology provides a sealed system resulting in maximum component lubrication with no need for additional grease.

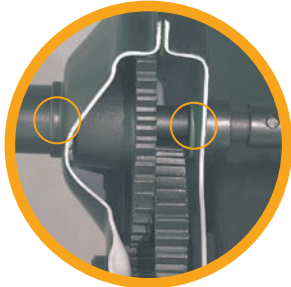
You can expect NoLube[®] technology to significantly lower your cost of ownership by reducing maintenance time and costs. Which, in turn, also keeps your trailers on the road earning money.



NoLube[®]

A sealed system that provides maximum lubrication with no need for additional grease.

Ask your sales representative for this exclusive option.



Shaft seals are added to all driveshaft and crankshaft bushings to prevent water, dirt, and other contamination.*



A grease tube completely surrounds the elevating screw so that when the legs are raised or lowered, the screw receives a new coating of grease.*

* Cutaway photos are of the FG4000 Model with NoLube option. Other NoLube products may vary slightly from the product picture to the left.

ORDERING INFORMATION

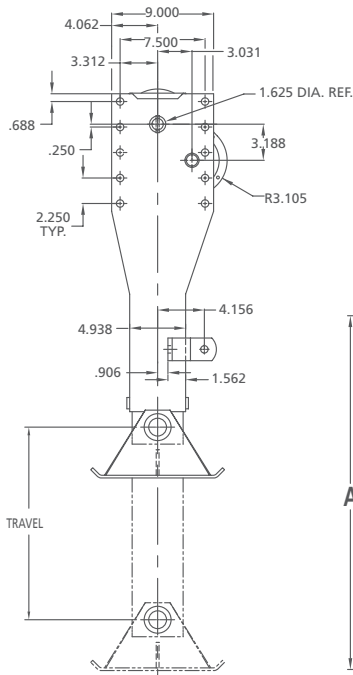
EXAMPLE: **LG5 001 - 7000 - 00 000**

LANDING GEAR		MOUNTING		SHAFTS		FOOTWEAR		TRAVEL		LEG ASS'Y		RETRACT TUBE		GREASE		LOG NO./ACCY NO.
NO.	MODEL	NO.	DESCRIPTION	NO.	DESCRIPTION	NO.	DESCRIPTION	NO.	DESCRIPTION	NO.	DESCRIPTION	NO.	DESCRIPTION	NO.	DESCRIPTION	
LG5	MODEL 50,000	0	UNIV. MT.21/32"	0	UNIVERSAL	0	NO FOOTWEAR	3	13-1/2"	0	SETS	0	STD.	0	STD. PACK	CONTACT SAF-HOLLAND FOR SPECIAL OPTIONS AND ACCESSORIES
		1	CONV. MT. 21/32"	1	REVERSE	1	SANDSHOE 4-1/2" x 10" x 10" STD.	5	15-1/2"	1	LEFT HAND	9	SPECIAL	3	FULL PACK IN GB & HD	
		4	I-BEAM 21/32"	2	I-BEAM	2	SANDSHOE 4-1/2" x 10" x 12"	7	17"	2	RIGHT HAND			7	STD. PACK & PERMALUBE	
		8	REVERSE MT. 21/32"	9	CONVENTIONAL	3	SANDSHOE 2" x 10" x 10"	9	19"					9	SPECIAL	
		9	SPECIAL	A	I-BEAM-10"	4	SANDSHOE 2" x 10" x 12"							Q	NOLUBE (PERMANENTLY LUBRICATED)	
		A	UNIV. MT. 17/32"	J	UNIV. E-Z SHIFT	5	12" DIA. SHOCKFOOT							R	NOLUBE PER BLOCK "Q" & ENHANCED SCREW LUBE.	
		B	CONV. MT. 17/32"	K	CONV. E-Z SHIFT	8	10" DIA. SHOCKFOOT							S	10 YEAR WARRANTY PER BLOCK "Q" & LG0128 SHOCKFOOT OR RCF REQUIRED.	
		H	I-BEAM MT. 17/32"	L	REVERSE E-Z SHIFT	M	SANDSHOE HD 4-1/2" x 12" x 12"							T	10 YEAR WARRANTY PER BLOCK "S". ENHANCED LUBRICATION ON SCREW.	
		L	REVERSE MT. 17/32"	M	I-BEAM E-Z SHIFT											

MOUNTING DISTANCES

REVERSE MOUNTED		
TYPE OF MOUNTING	96" WIDE TRAILER	102" WIDE TRAILER
MAXIMUM	85.000	91.000
MIN. (LG0083-01)	79.000	85.000
MIN. (LG0083-03)	67.750	73.750
MIN. (LG0083-05)	55.750	61.750

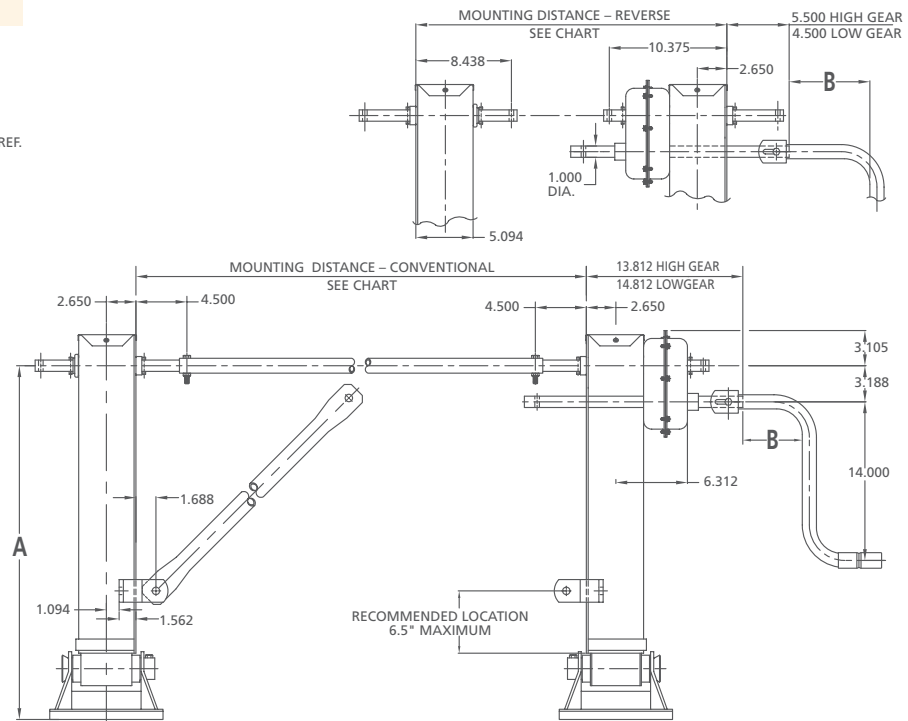
CONVENTIONAL MOUNTED		
	96" WIDE TRAILER	102" WIDE TRAILER
MAXIMUM	66.375	72.375
MIN. (LG0083-01)	60.375	66.375
MIN. (LG0083-03)	49.125	55.125
MIN. (LG0083-05)	37.125	43.125



LANDING GEAR DIMENSIONS

DESCRIPTION	A (10x10x4-1/2 OR 10x12x4-1/2 SANDSHOE)	A (10x10x2 OR 10x12x2 SANDSHOE)	A (SHOCKFOOT)	CRANK PART NUMBER	B
13.5" TRAVEL	28.688	26.188	29.250	LG0083-01	5.250
15.5" TRAVEL	29.688	27.188	—	LG0083-03	10.875
17" TRAVEL	31.188	28.688	31.750	LG0083-05	16.875
19" TRAVEL	33.688	31.188	34.250		

ALL DIMENSIONS SHOWN IN INCHES



SAF-HOLLAND USA, Inc.
888.396.6501 Fax 800.356.3929

SAF-HOLLAND Canada Limited
519.537.3494 Fax 800.565.7753
Western Canada 604.574.7491 Fax 604.574.024

www.safholland.com

