

# FW35 SERIES

THE WORLD'S MOST VERSATILE AND PROVEN FIFTH WHEEL  
FOR STANDARD, MODERATE AND SEVERE-DUTY



# HOLLAND FW35 SERIES

## HOLLAND FW35 – THE WORLD’S MOST VERSATILE AND PROVEN FIFTH WHEEL

This premium fifth wheel is designed for years of guaranteed performance, and has been the foundation for revolutionary new ideas that expand fifth wheel function and value. Available in a wide variety of models, including the FW31 NoLube™, and the FW33 LowLube, the FW35 meets the needs of transportation industry for today and tomorrow.

## SAF-HOLLAND TECHNOLOGY SETS US APART FROM THE REST

Since 1910, HOLLAND couplings have been earning a reputation for exceptional durability, performance and reliability. Our NoLube™ technology introduced the world’s first completely greaseless fifth wheel, and multiple FW35 options offer simple, affordable solutions to everyday problems. All of our technology has a simple goal; increase driver productivity while improving your bottom line.

*No other fifth wheel offers as many options as the FW35; over 100 custom options, providing unmatched versatility.*



**INDUSTRY LEADING!**  
**6 Years**  
**600,000 Miles**

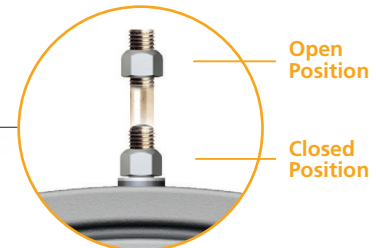
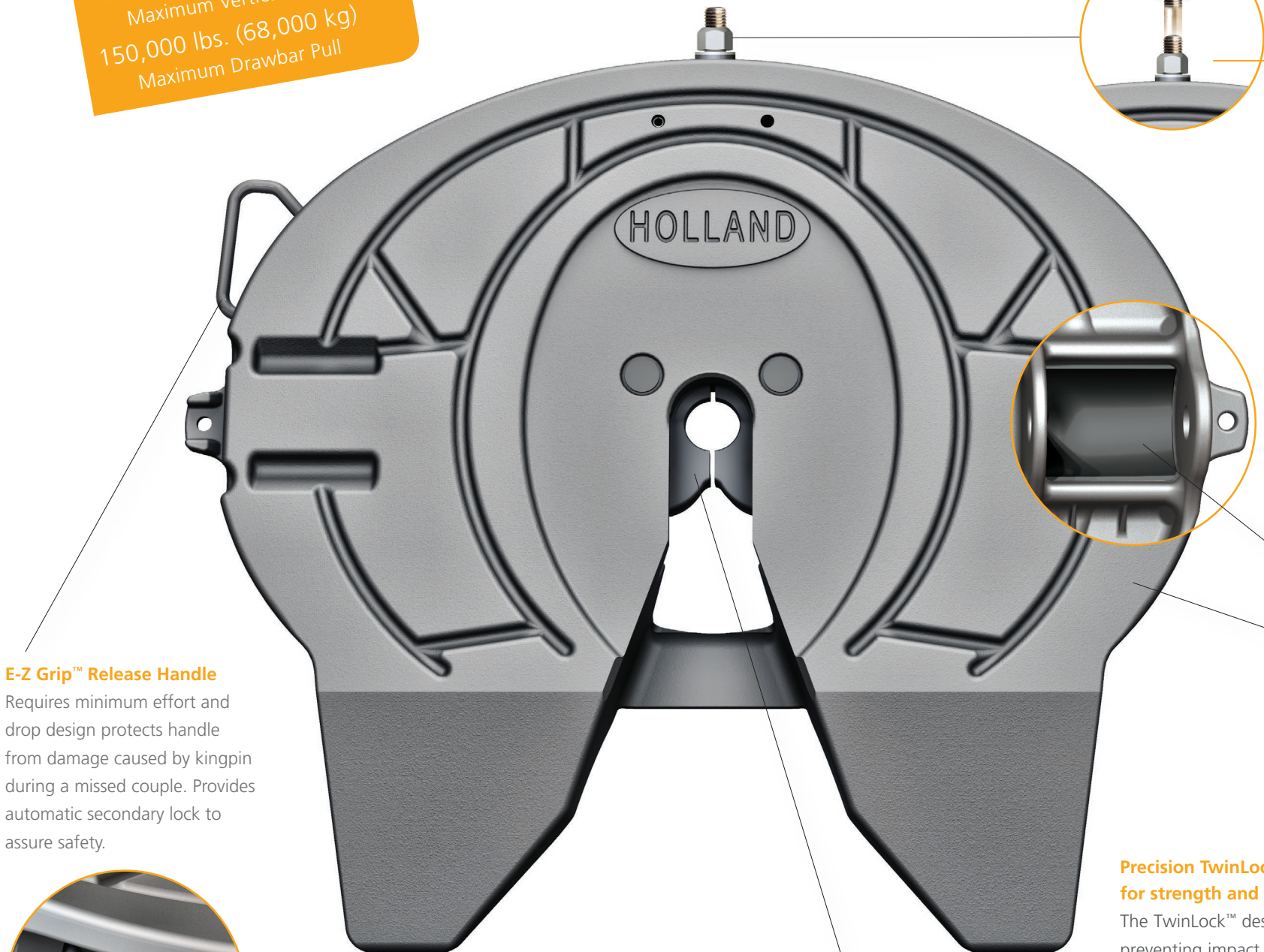
The HOLLAND FW35 Sedries is guaranteed for 6 Years/600,000 Miles to provide maximum operation performance.

In the unlikely case of wear requiring lock mechanism replacement, SAF-HOLLAND will cover the cost of parts, labor and freight.\*

\*Refer to warranty XL-FW10040WC for full details.



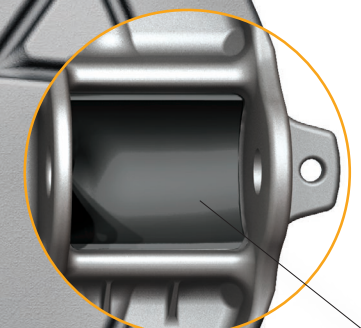
**CAPACITY**  
55,000 lbs. (25,000 kg)  
Maximum Vertical Load  
150,000 lbs. (68,000 kg)  
Maximum Drawbar Pull



Open Position  
Closed Position

**Visible Lock Indicator**  
Provides the driver with a clear visual indication – the shaft fully retracts when lock mechanism is properly closed around the kingpin.

**Easy Lock Adjustment**  
Infinite adjustment positions improves lock and kingpin durability.



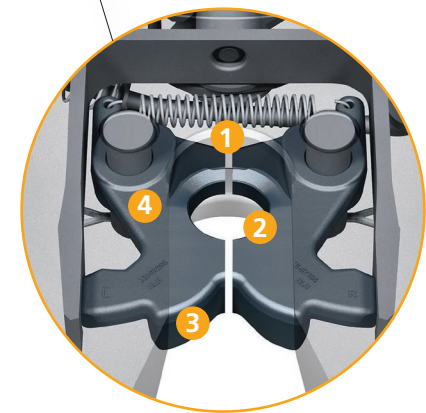
**NoLube™**  
**Articulation Pocket Liners**  
Provide smooth articulation with reduced maintenance.

**Cast Steel Top Plate**  
Optimized casting process for maximum strength to weight ratio.

**E-Z Grip™ Release Handle**  
Requires minimum effort and drop design protects handle from damage caused by kingpin during a missed couple. Provides automatic secondary lock to assure safety.



**Precision TwinLock™ mechanism is designed for strength and reliability**  
The TwinLock™ design immediately captures the kingpin preventing impact bounce out for a quick and reliable couple.



- 1. High coupling protection**  
Lock system protects against coupling at an improper height.
- 2. Much greater kingpin-to-lock contact area,**  
Larger contact area compared to competitive models, for longer kingpin and lock life.
- 3. Forged/cast steel locks**  
Rear lock is forged, hardened, and machined steel. Front lock is machined and hardened wear-resistant alloy.
- 4. Precision machining**  
Precision machining of lock mechanism for optimized kingpin interface.



# HOLLAND FW35 ELI-TE™

## ELECTRONIC LOCK INDICATOR – TECHNOLOGY ENHANCED

The HOLLAND ELI-te™ fifth wheel coupling assistant will help drivers GET IT RIGHT!

ELI-te™ assists the driver with LED lights on the fifth wheel to allow for quick recognition of a successful or failed coupling attempt. Drivers no longer need to guess on the success of the couple. ELI-te™ prevents potential mistakes before they happen.

The ELI-te™ feature provides a significant advantage to fleets looking to provide their drivers with user friendly assistance that enhances coupling efficiency, driver confidence, and safety.

- Successful couplings trigger white LED lights to assist the driver with visual lock inspection prior to performing a tug test.
- Unsuccessful coupling triggers flashing red LED lights to notify the driver of an issue prior to tug test.
- Promotes consistent and thorough driver coupling inspections.
- Robust electrical components: sealed one-piece harness, long-life LED lights, durable inductive sensors, and steel encased logic module ensure reliable operation in the toughest conditions.
- Superior FW35 Series TwinLock™ reliability enhanced with intelligent logic and interactive LED lights to assist with coupling inspections.
- ELI-te™ option for the FW35 Series is user friendly, requires minimal maintenance, and is backed by a 2-year warranty.

Energy efficient LED lights and sensors are strategically positioned under the top plate for maximum function, reliability, and protection.

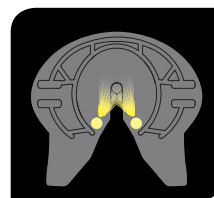


Flashing red warning LED lights for failed coupling attempt

High intensity white LED lights for successful coupling attempt



**FAILED COUPLING** – In the case of a failed coupling attempt, bright red flashing LED lights assist the driver to quickly recognize a potentially costly mistake before attempting a tug test or driving away.



**SUCCESSFUL COUPLING** – A successful couple triggers high-intensity white LED lights, strategically aimed at the kingpin and lock for enhanced visibility during the inspection process, especially in poor weather and low-light conditions.



# FW35 VOCATIONAL MOUNTING OPTIONS

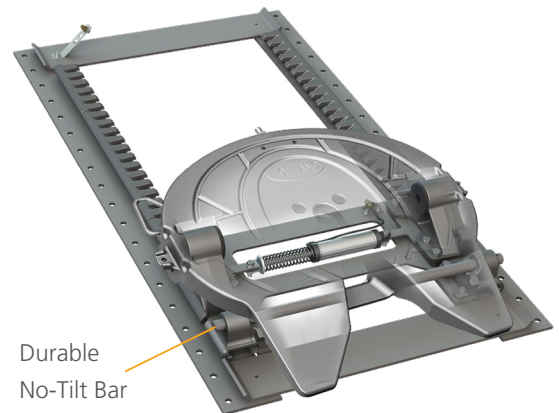


## NO-TILT

The HOLLAND NO-TILT mounting base provides the solution for applications where articulation is provided by the trailer. Using high-strength steel and an enhanced casting design, the HOLLAND NO-TILT provides reliability in both articulation directions, and both push and pull vertical strains. Specially designed for maximum safety, reliability and durability.



*Sliding and Stationary No-Tilt mounting base models available.*

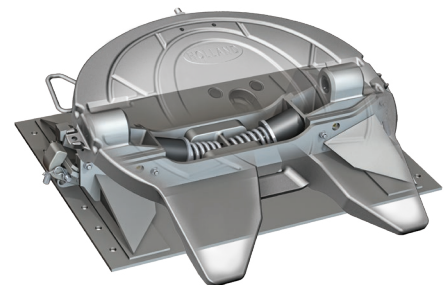


Durable No-Tilt Bar

**Severe-Duty Slider Also Available**

## KOMPENSATOR®

The patented design of the HOLLAND Kompensator® cradles the fifth wheel to provide side-to-side compensation in uneven terrain. This allows more flexibility between tractor and trailer and reduces torque and twist transfer through the fifth wheel to the trailer.



**Severe-Duty Slider Also Available**

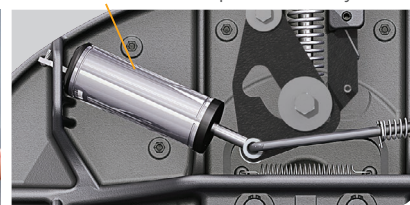
## IN-CAB AIR RELEASE

HOLLAND In-Cab Release improves safety, productivity, and helps reduce driver injury. Air Lock Release allows quick and safe uncoupling of the fifth wheel from the cab, and protects the driver from potential physical stress and muscle strain.

### Simple, Easy to Operate, In-Cab Lock Release System



Corrosion resistant pneumatic cylinder



# FW35 FIFTH WHEEL SPECIFICATIONS

## FW35 Top Plate Only

MODEL NUMBER		APPROX. WEIGHT
XA-351-A-L-P	Left Hand	226 lbs/103 kg
XA-351-A-P	Right Hand	226 lbs/103 kg



NOTE: Top Plate weights listed include 5 lbs/2.25kg for mounting pins.

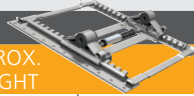
## FW33 and FW31 Top Plate Only

MODEL NUMBER		APPROX. WEIGHT
XA-331-A-L-P	Left Hand	251 lbs/114 kg
XA-331-A-P	Right Hand	251 lbs/114 kg
XA-311-A-L-P	Left Hand	251 lbs/114 kg
XA-311-A-P	Right Hand	251 lbs/114 kg

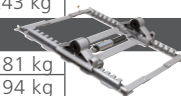


## FW35 ILS™ Sliding Mount Fifth Wheel Models

OUTBOARD MOUNT			
MODEL NUMBER	NOMINAL F.W. HEIGHT	SLIDE TRAVEL	APPROX. WEIGHT
FW35A712XL00	6.7"	12"	414 lbs/188 kg
FW35A724XL00	6.7"	24"	447 lbs/203 kg
FW35A736XL00	6.7"	36"	481 lbs/219 kg
FW35A748XL00	6.7"	48"	514 lbs/233 kg
FW35A812XL00	7.7"	12"	418 lbs/190 kg
FW35A824XL00	7.7"	24"	452 lbs/205 kg
FW35A836XL00	7.7"	36"	486 lbs/220 kg
FW35A848XL00	7.7"	48"	519 lbs/235 kg
FW35A912XL00	8.7"	12"	422 lbs/191 kg
FW35A924XL00	8.7"	24"	456 lbs/207 kg
FW35A936XL00	8.7"	36"	489 lbs/222 kg
FW35A948XL00	8.7"	48"	523 lbs/237 kg
FW35A012XL00	9.8"	12"	434 lbs/197 kg
FW35A024XL00	9.8"	24"	468 lbs/212 kg
FW35A036XL00	9.8"	36"	501 lbs/227 kg
FW35A048XL00	9.8"	48"	535 lbs/243 kg



INBOARD MOUNT			
MODEL NUMBER	NOMINAL F.W. HEIGHT	SLIDE TRAVEL	APPROX. WEIGHT
FW35B712XL00	6.7"	12"	399 lbs/181 kg
FW35B724XL00	6.7"	24"	429 lbs/194 kg
FW35B736XL00	6.7"	36"	455 lbs/206 kg
FW35B748XL00	6.7"	48"	483 lbs/219 kg
FW35B812XL00	7.7"	12"	404 lbs/183 kg
FW35B824XL00	7.7"	24"	432 lbs/196 kg
FW35B836XL00	7.7"	36"	460 lbs/209 kg
FW35B848XL00	7.7"	48"	488 lbs/221 kg
FW35B912XL00	8.7"	12"	408 lbs/185 kg
FW35B924XL00	8.7"	24"	436 lbs/198 kg
FW35B936XL00	8.7"	36"	464 lbs/210 kg
FW35B948XL00	8.7"	48"	492 lbs/223 kg
FW35B012XL00	9.8"	12"	420 lbs/191 kg
FW35B024XL00	9.8"	24"	448 lbs/203 kg
FW35B036XL00	9.8"	36"	476 lbs/216 kg
FW35B048XL00	9.8"	48"	504 lbs/229 kg



## FIFTH WHEEL FRAME WIDTH CODE CHART

FRAME WIDTH	CODE	FRAME WIDTH	CODE	FRAME WIDTH	CODE
33.25"	A	33.75"	E	34.25"	J
33.38"	B	33.88"	F	34.38"	K
33.50"	C	34.00"	G	34.50"	L
33.62"	D	34.12"	H		

\* Standard angle dimensions – 4" x 4" x .38" x 36".

For frame width other than .34", replace "G" with appropriate letter from code chart.

## FW35 Stationary Mount Fifth Wheel Models

FOOT MOUNT		
MODEL NUMBER	NOMINAL F.W. HEIGHT	APPROX. WEIGHT
FW35Y600XL00	5.6"	296 lbs/134 kg
FW35Y700XL00	6.6"	302 lbs/137 kg
FW35Y800XL00	7.6"	307 lbs/139 kg
FW35Y900XL00	8.6"	312 lbs/142 kg



FOOT MOUNT		
MODEL NUMBER	NOMINAL F.W. HEIGHT	APPROX. WEIGHT
FW35Z600XL00	5.6"	312 lbs/142 kg
FW35Z700XL00	6.6"	320 lbs/145 kg
FW35Z800XL00	7.6"	327 lbs/148 kg
FW35Z900XL00	8.6"	323 lbs/147 kg



BRACKETS ONLY FOR WELDING TO ANGLES		
MODEL NUMBER	NOMINAL F.W. HEIGHT	APPROX. WEIGHT
FW35X600XL00	5.2"	267 lbs/121 kg
FW35X700XL00	6.2"	273 lbs/124 kg
FW35X800XL00	7.2"	278 lbs/126 kg
FW35X900XL00	8.2"	283 lbs/128 kg



BRACKETS WITH MOUNTING ANGLES		
MODEL NUMBER	NOMINAL F.W. HEIGHT	APPROX. WEIGHT
FW35W600GL00*	5.6"	325 lbs/147 kg
FW35W700GL00*	6.6"	331 lbs/150 kg
FW35W800GL00*	7.6"	336 lbs/152 kg
FW35W900GL00*	8.6"	341 lbs/155 kg

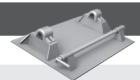


## FW35 Stationary No-Tilt Mount Fifth Wheel Models

OUTBOARD MOUNT		
MODEL NUMBER	NOMINAL F.W. HEIGHT	APPROX. WEIGHT
FW35N800YL00	7.8"	475 lbs/215 kg
FW35N900YL00	8.8"	477 lbs/216 kg



INBOARD FOR ANGLE MOUNTING		
MODEL NUMBER	NOMINAL F.W. HEIGHT	APPROX. WEIGHT
FW35N800ZL00	7.7"	443 lbs/201 kg

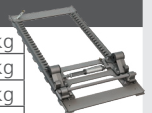


## FW35 ILS™ Sliding No-Tilt Fifth Wheel Models

OUTBOARD MOUNT			
MODEL NUMBER	NOMINAL F.W. HEIGHT	SLIDE TRAVEL	APPROX. WEIGHT
FW35N906YL00	8.8"	6"	530 lbs/240 kg
FW35N918YL00	8.8"	18"	564 lbs/256 kg
FW35N930YL00	8.8"	30"	598 lbs/271 kg
FW35N942YL00	8.8"	42"	631 lbs/286 kg



INBOARD FOR ANGLE MOUNTING			
MODEL NUMBER	NOMINAL F.W. HEIGHT	SLIDE TRAVEL	APPROX. WEIGHT
FW35N906WL00	8.8"	6"	510 lbs/231 kg
FW35N918WL00	8.8"	18"	540 lbs/245 kg
FW35N930WL00	8.8"	30"	568 lbs/258 kg
FW35N942WL00	8.8"	42"	596 lbs/270 kg



## FW35 Stationary Kompensator Fifth Wheel Models

OUTBOARD PLATE MOUNT		
MODEL NUMBER	NOMINAL F.W. HEIGHT	APPROX. WEIGHT
FW35-7729XL	9.8"	575 lbs/262 kg
FW35-7727XL	11.8"	640 lbs/290 kg
FW35-7726XL	12.8"	649 lbs/294 kg

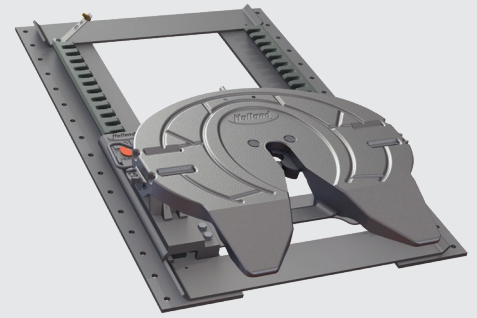


For Air Release option, add "80" to end of model number. Example: FW35A712XL80.

For right-hand release, replace "L" with "R" in model number.



# FW35 SEVERE-DUTY SLIDING FIFTH WHEEL SPECIFICATIONS



## FW35 Severe-Duty Sliding Mount Fifth Wheel Models

OUTBOARD MOUNT			
MODEL NUMBER	NOMINAL F.W. HEIGHT	SLIDE TRAVEL	APPROX. WEIGHT
FW35R812XL00	8"	12"	643 lbs/292 kg
FW35R824XL00	8"	24"	693 lbs/314 kg
FW35R836XL00	8"	36"	743 lbs/337 kg
FW35R848XL00	8"	48"	793 lbs/360 kg
FW35R860XL00	8"	60"	843 lbs/382 kg
FW35R872XL00	8"	72"	893 lbs/405 kg
FW35R912XL00	9"	12"	648 lbs/294 kg
FW35R924XL00	9"	24"	698 lbs/317 kg
FW35R936XL00	9"	36"	748 lbs/339 kg
FW35R948XL00	9"	48"	798 lbs/362 kg
FW35R960XL00	9"	60"	848 lbs/385 kg
FW35R972XL00	9"	72"	898 lbs/407 kg
FW35R012XL00	10"	12"	717 lbs/325 kg
FW35R024XL00	10"	24"	767 lbs/348 kg
FW35R036XL00	10"	36"	817 lbs/371 kg
FW35R048XL00	10"	48"	867 lbs/393 kg
FW35R060XL00	10"	60"	917 lbs/416 kg
FW35R072XL00	10"	72"	967 lbs/438 kg
FW35R112XL00	11"	12"	723 lbs/328 kg
FW35R124XL00	11"	24"	773 lbs/351 kg
FW35R136XL00	11"	36"	823 lbs/373 kg
FW35R148XL00	11"	48"	873 lbs/396 kg
FW35R160XL00	11"	60"	923 lbs/419 kg
FW35R172XL00	11"	72"	973 lbs/441 kg

INBOARD MOUNT			
MODEL NUMBER	NOMINAL F.W. HEIGHT	SLIDE TRAVEL	APPROX. WEIGHT
FW35S812XL00	8"	12"	593 lbs/269 kg
FW35S824XL00	8"	24"	631 lbs/286 kg
FW35S836XL00	8"	36"	669 lbs/303 kg
FW35S848XL00	8"	48"	707 lbs/321 kg
FW35S860XL00	8"	60"	745 lbs/338 kg
FW35S872XL00	8"	72"	783 lbs/355 kg
FW35S912XL00	9"	12"	598 lbs/271 kg
FW35S924XL00	9"	24"	636 lbs/288 kg
FW35S936XL00	9"	36"	674 lbs/306 kg
FW35S948XL00	9"	48"	712 lbs/323 kg
FW35S960XL00	9"	60"	750 lbs/340 kg
FW35S972XL00	9"	72"	788 lbs/357 kg
FW35S012XL00	10"	12"	668 lbs/303 kg
FW35S024XL00	10"	24"	706 lbs/320 kg
FW35S036XL00	10"	36"	744 lbs/337 kg
FW35S048XL00	10"	48"	782 lbs/355 kg
FW35S060XL00	10"	60"	820 lbs/372 kg
FW35S072XL00	10"	72"	858 lbs/389 kg
FW35S112XL00	11"	12"	673 lbs/305 kg
FW35S124XL00	11"	24"	711 lbs/323 kg
FW35S136XL00	11"	36"	749 lbs/340 kg
FW35S148XL00	11"	48"	787 lbs/358 kg
FW35S160XL00	11"	60"	825 lbs/374 kg
FW35S172XL00	11"	72"	863 lbs/391 kg

## FW35 Severe-Duty Sliding No-Tilt Fifth Wheel Models

OUTBOARD MOUNT			
MODEL NUMBER	NOMINAL F.W. HEIGHT	SLIDE TRAVEL	APPROX. WEIGHT
FW35N912YL00	9"	12"	679 lbs/308 kg
FW35N924YL00	9"	24"	729 lbs/331 kg
FW35N936YL00	9"	36"	779 lbs/353 kg
FW35N948YL00	9"	48"	829 lbs/376 kg
FW35N960YL00	9"	60"	879 lbs/399 kg
FW35N972YL00	9"	72"	929 lbs/421 kg

INBOARD MOUNT			
MODEL NUMBER	NOMINAL F.W. HEIGHT	SLIDE TRAVEL	APPROX. WEIGHT
FW35N912ZL00	9"	12"	628 lbs/285 kg
FW35N924ZL00	9"	24"	666 lbs/302 kg
FW35N936ZL00	9"	36"	704 lbs/319 kg
FW35N948ZL00	9"	48"	742 lbs/337 kg
FW35N960ZL00	9"	60"	780 lbs/354 kg
FW35N972ZL00	9"	72"	818 lbs/371 kg

## FW35 Severe-Duty Sliding Kompensator Fifth Wheel Models

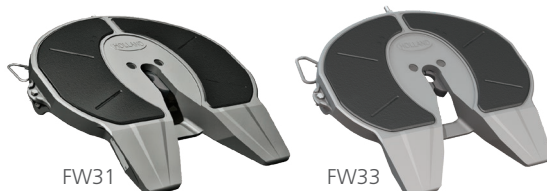
OUTBOARD MOUNT			
MODEL NUMBER	NOMINAL F.W. HEIGHT	SLIDE TRAVEL	APPROX. WEIGHT
FW35K312YL00	13"	12"	872 lbs/396 kg
FW35K324YL00	13"	24"	922 lbs/418 kg
FW35K336YL00	13"	36"	972 lbs/441 kg
FW35K348YL00	13"	48"	1022 lbs/464 kg
FW35K360YL00	13"	60"	1072 lbs/486 kg
FW35K372YL00	13"	72"	1122 lbs/509 kg

INBOARD MOUNT			
MODEL NUMBER	NOMINAL F.W. HEIGHT	SLIDE TRAVEL	APPROX. WEIGHT
FW35K312ZL00	13"	12"	859 lbs/390 kg
FW35K324ZL00	13"	24"	897 lbs/407 kg
FW35K336ZL00	13"	36"	935 lbs/424 kg
FW35K348ZL00	13"	48"	973 lbs/441 kg
FW35K360ZL00	13"	60"	1011 lbs/459 kg
FW35K372ZL00	13"	72"	1049 lbs/476 kg

### FW31 **NoLube**™ FW33 LowLube Series Options

FW33 for reduced or FW31 for completely grease free operation.



**INDUSTRY LEADING!**  
**6 Years**  
600,000 Miles

**PERFORMANCE GUARANTEE**

# SAF Holland Group



TRAILER AXLES AND  
SUSPENSION SYSTEMS



COUPLING AND  
LIFTING SYSTEMS



SUSPENSIONS FOR  
TRUCKS AND BUSES



SUSPENSIONS AND  
AXLE SYSTEMS



BUS AIR SUSPENSION  
SYSTEMS



V. ORLANDI  
TOWING  
SYSTEMS



TRAILER AXLES/SUSPENSIONS,  
COUPLING AND LIFTING  
SYSTEMS

[safholland.com](http://safholland.com)

**SAF-HOLLAND, Inc.**

888.396.6501 Fax 800.356.3929

**SAF-HOLLAND Canada Limited**

519.537.3494 Fax 800.565.7753

Western Canada 604.574.7491 Fax 614.574.0244