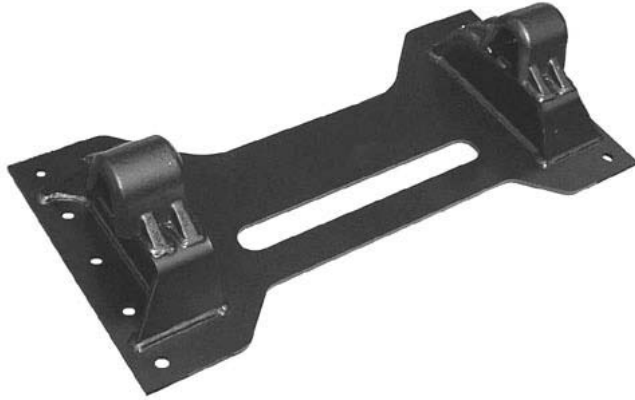




WEIGHTSAVER®

MOUNTING GUIDELINES



Weightsaver®

EC approved 94/20/EG



Mounting must be carried out in accordance with the instructions below. In Germany TÜV guidelines and the §§ 19, 20 and 21 of the StVZO must be followed for the installation of the Weightsaver® and the mounted Fifth Wheel.

General Instructions:

Minimum Sub-frame Attachment requirements (per side):

- 5 screws M16 x 1,5 (min. Quality 8.8)
- 4 screws M16 x 1,5 (min. Quality 10.9)
- 4 screws M20 x 1,5 (min. Quality 8.8)



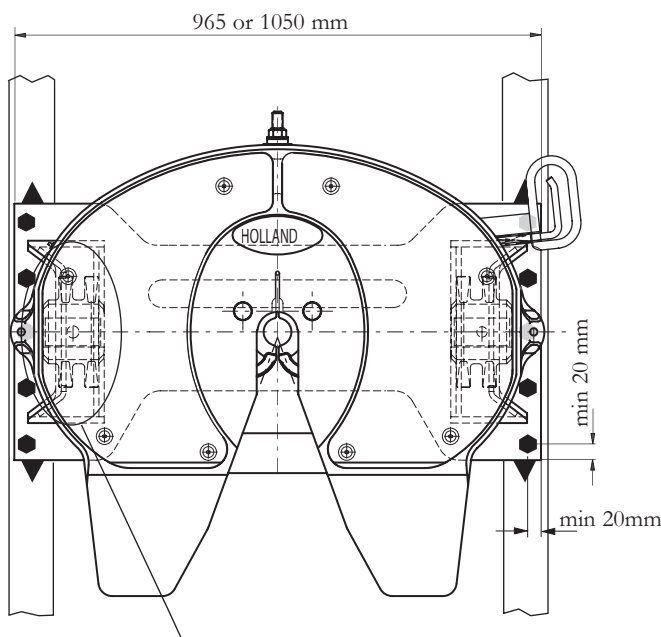
WARNING

In addition to these recommendations, all fifth wheel mounting plate installations must be made in accordance with all applicable government regulations where the vehicle is registered and/or operated.

The bolted joints must be properly torqued as shown below and checked for a secure installation.

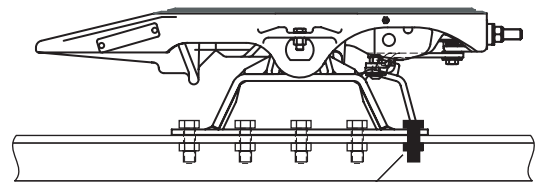
The fifth wheel must be mounted in such a way that the top plate is freely movable above the brackets.

The Weightsaver® base plate can be secured against longitudinal and lateral movements through the use of welded thrust plates. This may be a requirement of the tractor manufacturer or a government regulation.



Note: Bracket mounting on chassis area

Welding procedure: E II
 Filler Material: E 4320 B9 DIN 1913
alternatively
 Welding procedure: MAG C
 TÜV approved filler material



M20 x 1,5 - 8.8
tightened to 460 Nm

M16 x 1,5 - 8.8
tightened to 225 Nm

M16 x 1,5 - 10.9
tightened to 315Nm

Holland reserves the right, without prior notice, to change specifications and dimensions.

XL-MP1023-02



Copyright © June 2004 • The Holland Group Inc.



The Holland Group, Inc.
Holland, MI 49423
United States
Phone: (616) 396-6501
Fax: (616) 396-1511

EN ISO
9001:2000



DNV
Certified
Company

Holland Europe GmbH

Altenkamp 9
D-33758
Schloss Holte-Stukenbrock
Germany

Phone: +49 (0) 5207-89560
Fax: +49 (0) 5207-895656

Holland Eurohitch Ltd.

Hoo Farm Industrial Estate
Worcester Road
Kidderminster
Worcestershire
DY11 7RA

Phone: +44 (0) 1562-732010
Fax: +44 (0) 1562-732020

Holland Hitch (Aust.) Pty. Ltd.

Melton, Victoria, Australia
Phone: 61-(0)3-9743-6799
Fax: 61-(0)3-9747-9617

Holland Transtrade

(Thailand) Company, Ltd.
Bangkok, Thailand
Phone: 66 (0)2-513-8758
Fax: 66 (0)2-513-8757

Nippon Holland, Ltd.

Tokyo, Japan
Phone: 81-(0)3-3461-9130
Fax: 81-(0)3-3463-1407

Holland Transtrade

Far East SDN BHD
Shah Alam, Malaysia
Phone: 60 (0)3 734-2888
Fax: 60 (0)3 736-5588