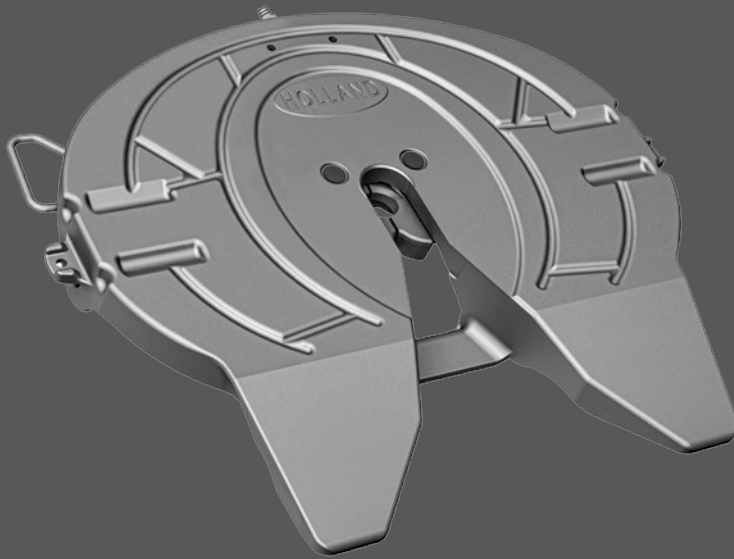


Owners Manual

Yard Spotter Series XA-351-03505 & XA-351-UB Fifth Wheels

- Operation
- Maintenance Procedures
- Comprehensive Warranty



Notes, Cautions, and Warnings

You must read and understand all of the safety procedures presented in this manual before starting any work on the SAF-HOLLAND product.

Proper tools must be used to perform the maintenance and repair procedures described in this manual. Many of these procedures require special tools.

Throughout this manual, you will notice the terms **“NOTE”**, **“IMPORTANT”**, **“CAUTION”**, and **“WARNING”** followed by important product information. So that you may better understand the manual, those terms are as follows:

NOTE: Includes additional information to enable accurate and easy performance of procedure.

IMPORTANT: Includes additional information that if not followed could lead to hindered product performance.

- CAUTION** Used without the safety alert symbol, indicates a potentially hazardous situation which, if not avoided, may result in property damage.
- ▲ CAUTION** Indicates a potentially hazardous situation which, if not avoided, may result in minor or moderate injury.
- ▲ WARNING** Indicates a potentially hazardous situation which, if not avoided, could result in death or serious injury.

Check Equipment Prior to Use

1. Make sure the fifth wheel is properly lubricated.
2. Make sure the secondary lock is disengaged. (See **Figure 1**).
3. Make sure the fifth wheel locks are open.
4. Make sure the fifth wheel ramps are tilted down as shown in **Figure 2**.

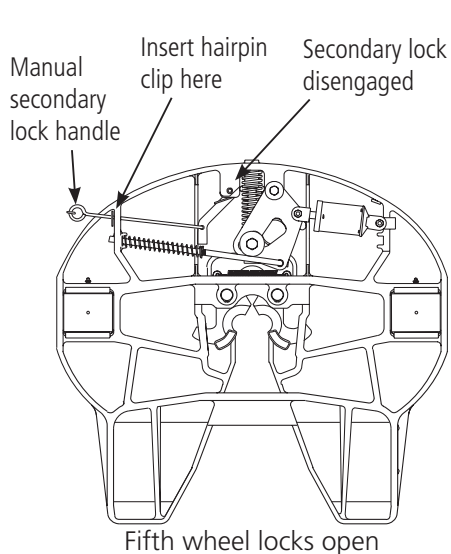


FIGURE 1

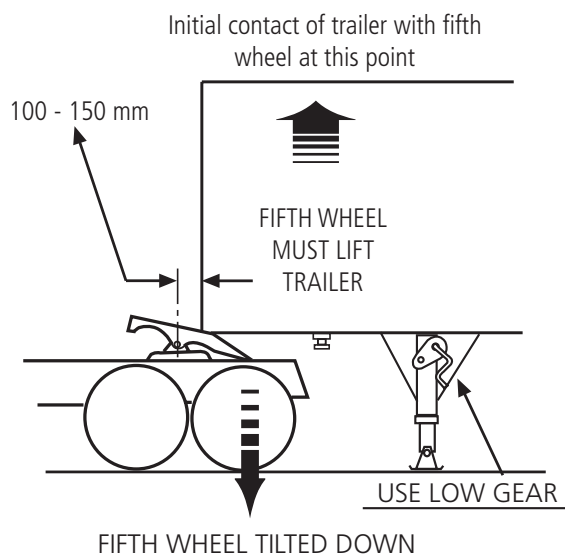


FIGURE 2

Coupling

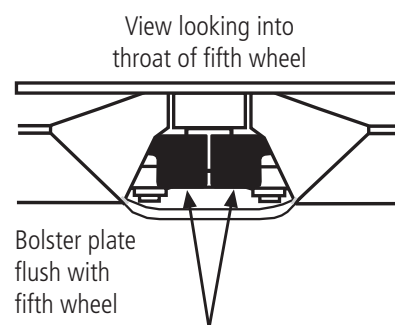
1. Back up closer to the trailer, centering the kingpin on the throat of the fifth wheel.
STOP. Set vehicle brakes.
2. Check to see that the trailer is at the proper height for coupling. (The front of the skid plate should contact the fifth wheel approximately 100 - 150 mm behind the fifth wheel's pivot point. If not, raise or lower the fifth wheel and if necessary, the trailer landing gear, to obtain this position.)
3. Back under the trailer and engage the fifth wheel locks with the trailer kingpin. Ensure the landing legs have lifted clear off the ground. Pull forward to test the completeness of the coupling as an INITIAL check. Set vehicle brakes. Next, visually inspect the fifth wheel, as shown in **Figure 3**, to verify that it is properly locked.

⚠ WARNING Failure to verify a proper couple can result in tractor and trailer separation, causing death or serious injury to you or other (see **Figure 3**).

5. If required, the manual secondary lock should be engaged. To engage the secondary lock, remove the hairpin clip on the secondary lock handle allowing the secondary lock to pivot behind the locking yoke as shown in **Figure 4**.
6. Connect air lines. Release trailer and vehicle brakes. Raise trailer to desired height and move trailer.

⚠ WARNING Elevating fifth wheels in the elevated position are less stable than standard fifth wheels. To avoid rollovers, do not travel at excessive speeds, and do not make sudden turns or maneuvers.

⚠ CAUTION This unit is not recommended for operation on public streets and highways and does not have required CRN approvals.



LOCKS COMPLETELY CLOSED
AROUND KINGPIN

FIGURE 3

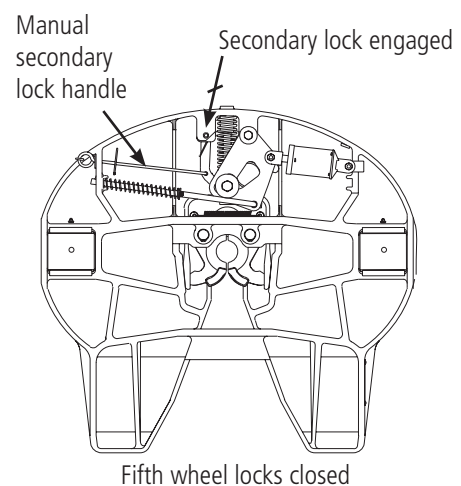
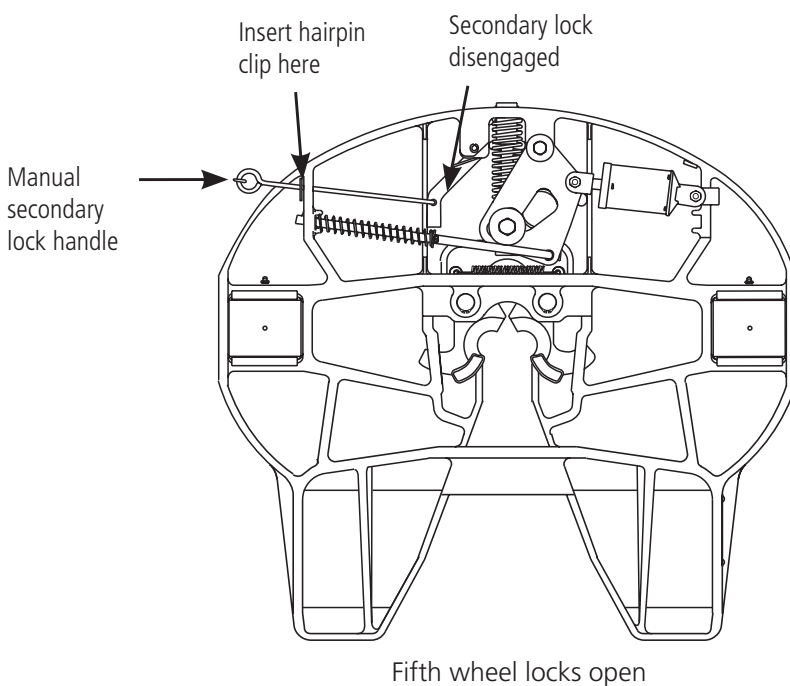


FIGURE 4

Uncoupling

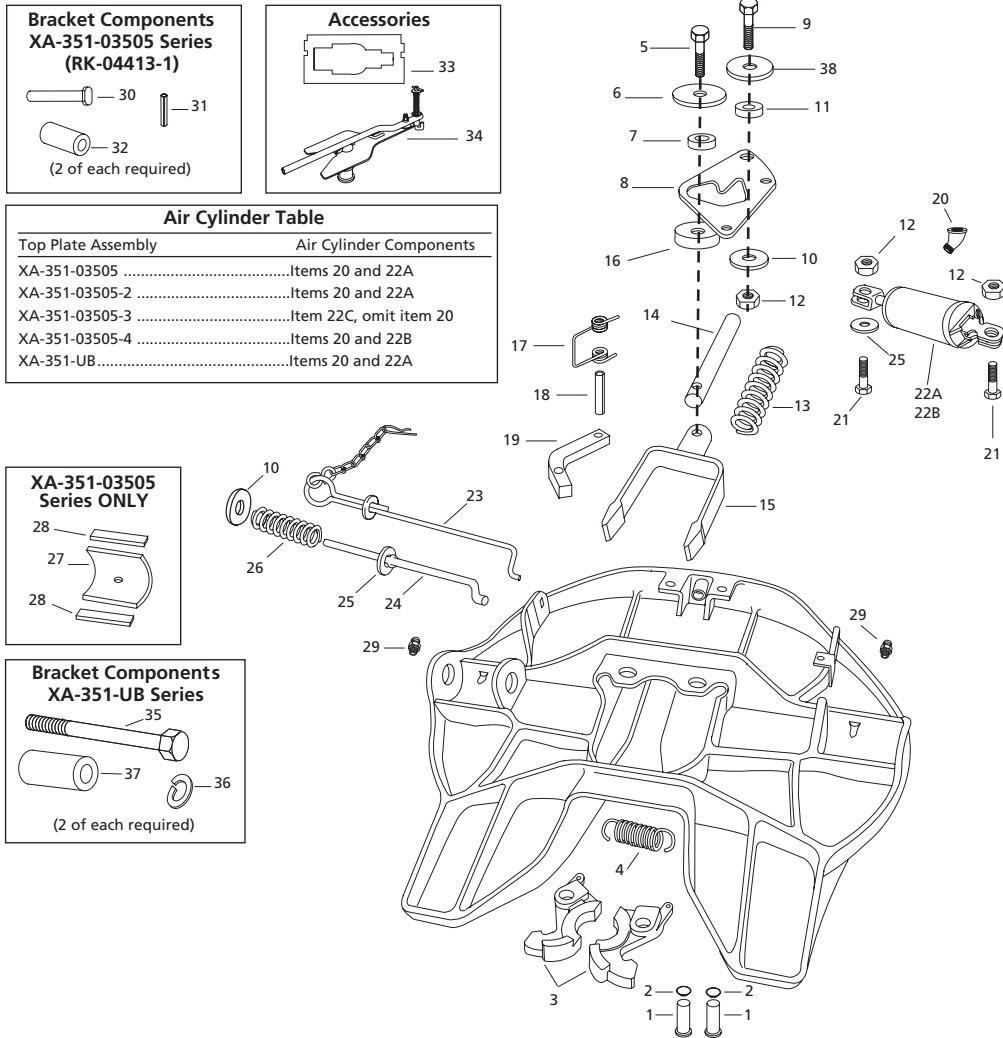
1. Position yard spotter vehicle and trailer on firm, level ground clear of obstructions and people.
2. Release trailer brakes, lower fifth wheel until the trailer landing gear touch the ground. Set vehicle brakes.
3. Disconnect trailer air supply and electrical connection.
4. If the manual secondary lock was engaged, remove the hairpin clip on the secondary lock handle, pull the secondary lock handle outward to disengage the secondary lock. While holding the handle out, re-insert the hairpin clip into the hole in the handle. (See Figure 5.)
5. Actuate the fifth wheel control valve and hold it in to open the locks.
6. While holding the lock control valve in, slowly pull out from the trailer.
7. After driving completely free of the kingpin, release the lock control valve.



PARTS BREAKDOWN



SAF-HOLLAND Group



**Bracket Components
XA-351-03505 Series
(RK-04413-1)**

30 31
32
(2 of each required)

Accessories

33 34

Air Cylinder Table

Top Plate Assembly	Air Cylinder Components
XA-351-03505	Items 20 and 22A
XA-351-03505-2	Items 20 and 22A
XA-351-03505-3	Item 22C, omit item 20
XA-351-03505-4	Items 20 and 22B
XA-351-UB	Items 20 and 22A

**XA-351-03505
Series ONLY**

27 28

**Bracket Components
XA-351-UB Series**

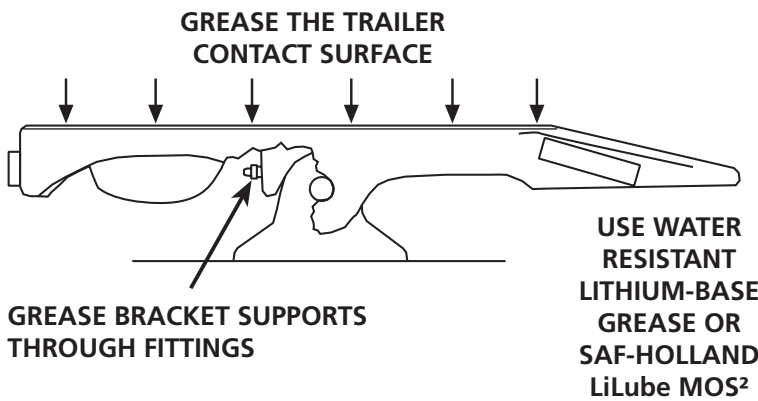
35 36 37
(2 of each required)

ITEM NO.	PART NO.	REQ'D.	PART NAME	ITEM NO.	PART NO.	REQ'D.	PART NAME
1	XA-07292-1	2	Lock pin	21	XB-T-89-5	2	HHCS 1/2"-20 x 1-3/4"LG
2	XB-07398	2	Retaining ring	22A*	XA-2524-R-13-1	1	Air cylinder
3	XA-08332-1	1	Lock jaw set	22B*	XA-2524-R-13-2	1	Air cylinder
4	XB-07628	1	Extension spring	22C*	XA-2524-R-13-3	1	Air cylinder
5	XB-10035	1	Hex head cap screw 5/8"-18 x 2"	23	XA-3546	1	Secondary lock handle
6	XB-07431	1	Washer 5/8" I.D. x 2 5/8" O.D.	24	XA-09041	1	Release handle
7	XA-1507-1	1	Roller 5/8" I.D.	25	XB-PW-1732-1-116	2	Washer 1/2" I.D. x 1" O.D.
8	XA-08988	1	Cam plate	26	XB-07291	1	Compression spring
9	XB-2083	1	Hex head cap screw 1/2"-20 x 1-3/4"	27	XA-03423	2	Bracket bearing
10	XB-08559	2	Washer 1/2" I.D. x 1-3/4" O.D.	28	XA-0268	4	Bearing stop block
11	XA-1029	1	Roller 1/2" I.D.	29	XB-H-38	2	Grease fitting
12	XB-T-69-A	3	Locknut 1/2"-20 (2 add'l req. for brackets)	30	XA-2016	2	Bracket pin
13	XB-1505	1	Yoke spring	31	XB-21-S-375-1750	2	Roll pin 3/8" x 1-3/4"
14	XA-1706-1	1	Yoke shaft	32	XB-0011	2	Rubber bushing
15	XA-07295	1	Yoke	33	TF-0110	1	Kingpin gage
16	XA-09040	1	Cam spacer	34	TF-TLN-5001	1	Kingpin lock tester
17	XB-2149	1	Torsion spring	35	XB-BR-118-C-7	2	HHCS 1-1/8"-7 x 7"
18	XB-21-S-500-2750	1	Roll pin 1/2" x 2-3/4"	36	XB-E-536	2	Washer, lock 1-1/8"
19	XA-3528	1	Secondary lock	37	XB-1604-5	2	Rubber Bushing
20	XB-698	1	45° street elbow	38	XB-1030	1	Washer, 1/2" I.D. x 2-1/4" O.D.

PERIODIC MAINTENANCE OF XA-351-UB AND XA-351-03505 FIFTH WHEEL TOP PLATES

WEEKLY

1. Apply grease to the bracket supports through the grease fittings as shown below.
2. Be sure the fifth wheel top plate is lubricated.
3. Check operation of the fifth wheel locking mechanism.



MONTHLY

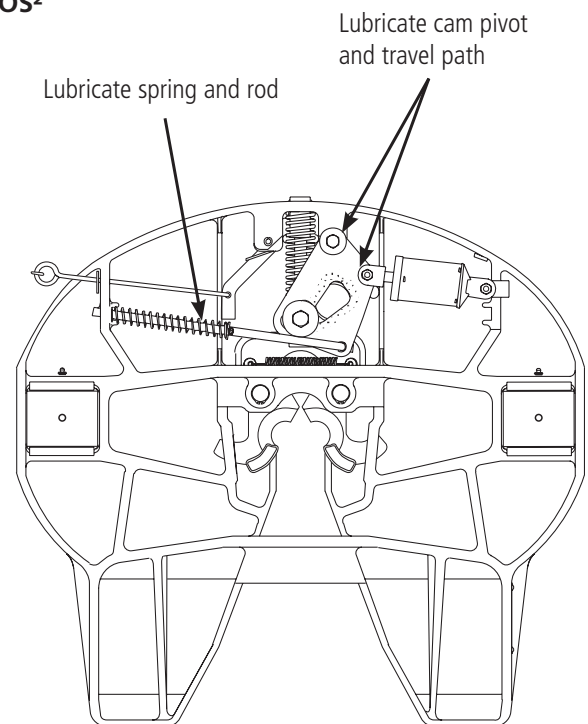
1. Steam clean the entire top plate thoroughly.
2. Inspect the fifth wheel top plate assembly.
 - Check for — and replace — any bent, worn, or broken parts.
 - Check for cracks in the top plate casting or any component part.

Replace as required using only genuine HOLLAND parts.

3. Check the fifth wheel locking mechanism for proper operation using a HOLLAND TF-TLN-1000 or TF-TLN-5001 Lock Tester. When checking, move the lock tester fore and aft when closed in the locks. If play exceeds 10 mm, rebuild or replace the top plate. See your Holland Distributor for parts and ordering information.

⚠ WARNING

Using a fifth wheel that does not lock properly can result in trailer separation, causing death or serious injury.



4. Relubricate the entire fifth wheel as shown above.



WARRANTY

COMMERCIAL PRODUCTS WARRANTY

SAF-HOLLAND warrants Fifth Wheel, Landing Gear and Kingpin Commercial Products (products other than those normally used for personal, family or house hold purposes) manufactured by it, when properly installed, to be free from defects in material and workmanship under normal use and service for a period of one (1) year from the date of manufacture, with the exception of the FW351, FW331 and FW342 that have 3 years (not including attached Bases and Ballraces) FW70, FW72, G36, G37 and G38 Series fifth wheels that have 2 years (not including attached Bases and Ballraces) and the elevating fifth wheels for which the warranty period is ninety (90) days.

The warranty is void with respect to any product which has been altered in any way from its manufactured condition, such as intentional modification, accident, corrosion, misuse failure to provide necessary and reasonable maintenance and is exclusive of normal wear.

The sole responsibility of SAF-HOLLAND under this warranty is limited to repairing or replacing at the factory any part or parts which are returned, with transportation charges prepaid, and are found to be defective to the satisfaction of SAF-HOLLAND. Written authorization from SAF-HOLLAND must be obtained prior to returning any part or parts. No charges for transportation or for labour performed on SAF-HOLLAND products by unauthorized persons will be allowed under this warranty.

SAF-HOLLAND shall not be liable, in any event, for proximate, incidental, consequential or other damages, including but not limited to damages for loss of production or injury to persons or property arising out of any breach of this warranty.

THERE ARE NO WARRANTIES, EXPRESSED OR IMPLIED, INCLUDING THE WARRANTY OF MERCHANTABILITY OR A WARRANTY OF FITNESS FOR A PARTICULAR PURPOSE EXTENDING BEYOND THAT SET FORTH ABOVE.

SAF-HOLLAND reserves the right, without prior notice, to change specifications and dimensions as designs are altered and/or improved.

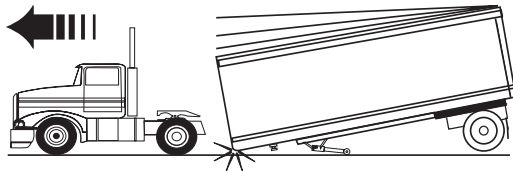
Options and features other than those shown may be provided.

W-1d

IMPORTANT: Enclosed is important information for the installation, operation, and maintenance of this product. Read and understand this information.



WARNING



Failure to properly install, operate, or maintain this fifth wheel could result in tractor and trailer separation causing death or serious injury to others.



TRAILER AXLES AND
SUSPENSION SYSTEMS



COUPLING AND LIFTING
TECHNOLOGIES



SUSPENSIONS FOR
TRUCKS AND BUSES



SUSPENSIONS AND COMPONENTS
FOR COMMERCIAL VEHICLES



BUS AIR SUSPENSION
SYSTEMS



COUPLING AND LIFTING
TECHNOLOGIES



TRAILER AXLES AND
SUSPENSION SYSTEMS

safholland.com.au

SAF-HOLLAND (Aust.) Pty. Ltd.
PO Box 63 · 115 High St · Melton Vic 3337
Tel: (03) 9971 7900 Fax: (03) 9743 6763

ABN: 79004371215
Sales: 1300 131 613
Email: sales@safholland.com.au
Web: www.safholland.com.au