

Inspection of adjustment device SBS 2220H0

The following service information relates only to the inspection of the adjustment function for the above-mentioned brake caliper, all information relating to the repair instructions for air disc brake SBS 2220 H0 retain their validity.

1. Secure vehicle against rolling (fig. 1)
2. Release brake, ensure here that the operating system is filled up to operating pressure and that the parking brake of the trailer / semi-trailer is in the release position.

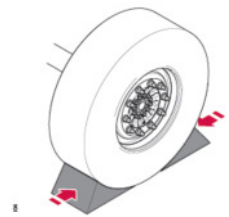


Fig. 1 · Räder sichern

3. Remove the yellow cap. (fig. 3 A)
4. Turn the adjusting rod clockwise until there is a noticeable resistance. Fig. 2)
 - Tool required: TORX 55
 - Please note: max. torque 20 Nm

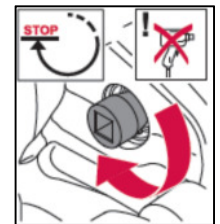


Fig. 2

The maximum allowable torque cannot exceed 20 Nm.

5. After that, turn the adjusting rod counter-clockwise 4 rotations (fig. 3B)
Please note: max. torque 20 Nm
6. If there is noticeable resistance when turning forward (clockwise) and turning back (counter-clockwise), the brake is good operational condition. Continue with numbers 9 and 10.

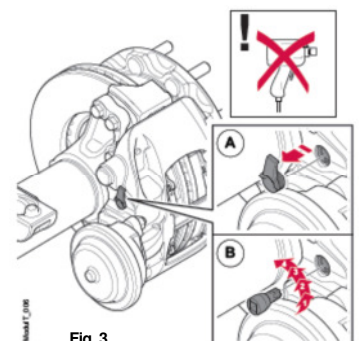
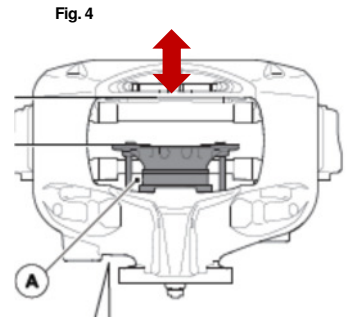


Fig. 3

7. If there is no noticeable resistance when turning forward (clockwise) or turning back (counter-clockwise), the brake pads must be removed in accordance with the repair instructions for air disc brake SBS 2220 H0.

8. Once the brake pad has been removed, it is to be inspected to determine whether the pressure piece (fig. 4 A) can be pulled by hand from the brake caliper front. If this is possible, the brake caliper is to be replaced immediately.
- For information on how the brake caliper is to be removed, please refer to the repair instructions for air disc brake SBS 2220 H0 or to the installation instructions for the brake caliper.



9. Turn the adjusting rod manually in a clockwise direction until the brake pads lie flat with the brake disc. Afterwards, turn the adjusting rod 2 clicks in a counter-clockwise direction. See ⇒fig. 5.



Fig. 5

10. Afterwards close the opening with the yellow cap. Pay close attention to ensuring that the yellow cap is in the correct position and to thus ensure that the sealing function of the cap is assured. See ⇒fig. 6

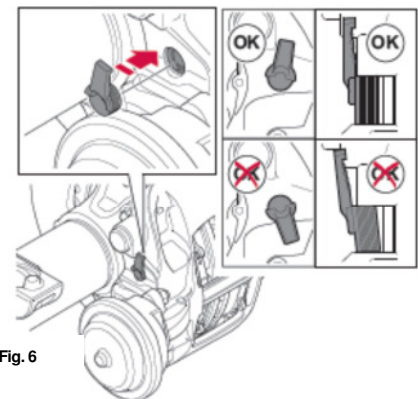


Fig. 6