

SAF AXLE

SERVICE BULLETIN

ABS sensor location on SAF SKRZ models

1 October 2007

The ABS sensors should **ALWAYS** be fitted in the following manner to SAF SKRZ model axles;

The ABS Sensors should be orientated as close to horizontal as possible and always facing towards the front of the trailer. This means they should be located between the 3 and 4 o'clock position's on the drivers side (Fig 1) or between the 8 and 9 o'clock position's on the passenger side (Fig 2).

Please note that they should **NEVER** be mounted above horizontal (9-3 o'clock), nor should they be mounted directly downwards (5-7 o'clock).

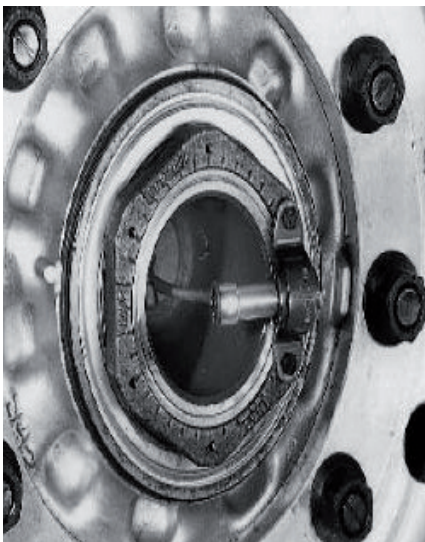


Fig 1 – DRIVERS SIDE
FRONT OF TRAILER →
DIRECTION OF ROTATION ↻

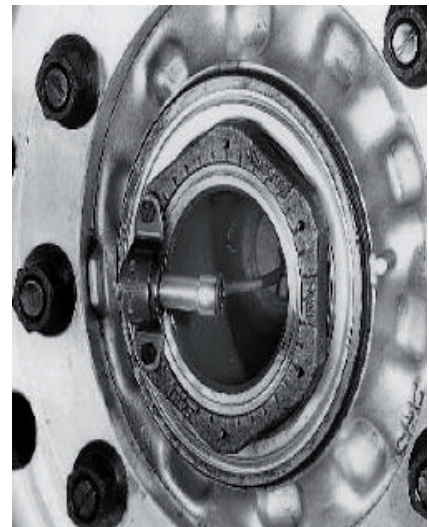


Fig 2 – PASSENGER SIDE
FRONT OF TRAILER ←
DIRECTION OF ROTATION ↻