

NOW AVAILABLE

TIRE  **PILOT**
PLUS

SAF **CBX SERIES**

THE FIXED FRAME SUSPENSION SERIES
THAT DELIVERS DURABILITY AND PROVEN
PERFORMANCE, ALL IN A LIGHTWEIGHT SYSTEM

CBX FIXED FRAME AIR SUSPENSION AXLE SYSTEMS

The CBX Series offers a completely pre-engineered single sourced suspension axle system that is ready for installation at the trailer OEM. SAF-HOLLAND has combined the CBX lightweight suspensions with SAF axle technology to create multiple models to meet the requirements of many applications.

The versatile SAF CBX Series axle suspension delivers one of the lightest weight solutions for platforms, grain haulers, tankers, dumps, livestock and specialty trailers.

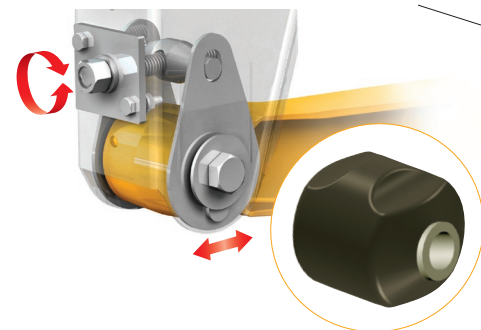
MODEL CAPACITIES

23,000 lbs. CBX23
25,000 lbs. CBX25
30,000 lbs.* CBX25/30
* The CBX25/30 is rated for 30,000 lbs. of load carrying at creep speed. Creep speed is defined as 5 mph or less.

Swing Align™

The fastest and most convenient axle alignment system in the industry.

No replacement parts or disassembly is required. Axle alignment adjustment is made directly by the lead screw. Requires less than 250 ft. lbs. of torque to adjust.



Multi-Functional Pivot Bushing

A robust bushing with its exterior void design limits the twisting movement that could lead to premature bushing and tire wear.

Lightweight Cast Steel Trailing Arm Beam Design

Cast beam design meets the demand for durability while providing a low overall system weight.

The CBX25/30 Model is Rated For 30,000 lbs. of Load Carrying Capacity at Creep Speed*

The CBX25/30 is specifically designed to address additional load transfer to the primary suspensions when lift axles are raised, typically encountered in tight maneuvering situations. The CBX25/30 delivers the additional load capacity through a larger air spring.

* Creep speed is defined as 5 mph or less.

Drum Brake Axle is Standard Equipment

The SAF CBX standard configuration features a SAF X-Series 5.75" diameter 11mm wall axle with 16½" x 7 extended life brake linings and industry standard tapered spindles. Optional parallel spindles also available.

For an even lighter weight system, an optional 9mm wall axle is available with the CBX23 for on-highway approved applications.

WHEN EQUIPPED WITH OPTIONAL SAF P89 AIR DISC BRAKES, THE CBX SERIES PROVIDES SOME OF THE LIGHTEST WEIGHT AIR DISC BRAKE SUSPENSIONS AVAILABLE.

SUPERIOR CORROSION PROTECTION



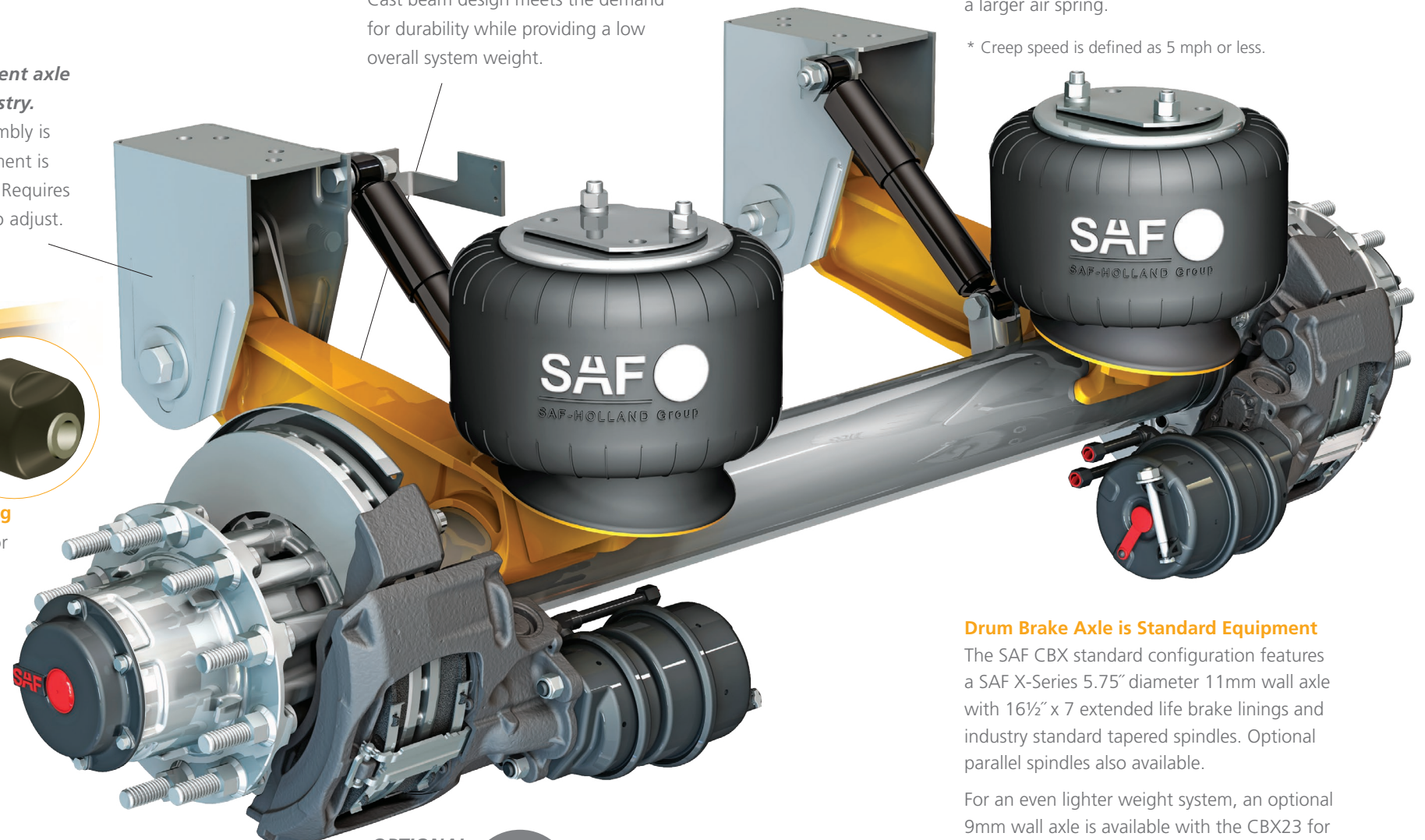
BLACK ARMOUR™ IS STANDARD WITH AEROBEAM



OPTIONAL
P89 Series
AIR DISC BRAKES

Two Model Choices to Meet Your Fleet's Specific Needs

The P89 model at a price point that makes sense for fleets of any size. And, the P89 Plus for premium performance. Disc brakes simply provide better performance than drum brakes. They stop shorter for increased safety and reduced maintenance for lower total cost of ownership.



OPTIONAL P89 SERIES AIR DISC BRAKES

**INDUSTRY LEADING
AIR DISC BRAKE
WARRANTY**

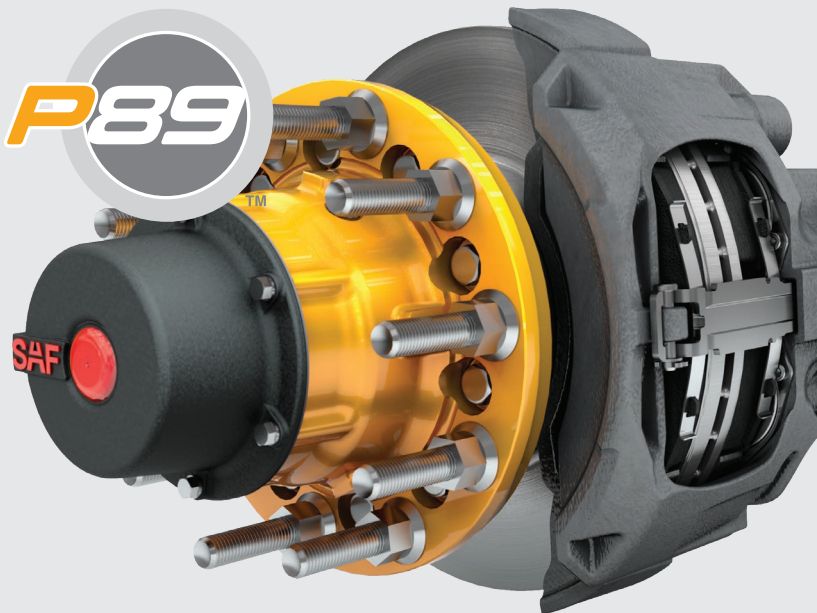
See XL-AS11002WC warranty
statement for complete details.

Proven Design Quality
with Genuine Value

All the benefits you expect from the world's leading trailer axle disc brake supplier, at a price point that makes sense for commercial fleets of all sizes.

Featuring:

- Heavy-duty venter rotor
- SAF caliper
- Premium matched set bearings
- Parallel or taper spindle
- 5-Year warranty

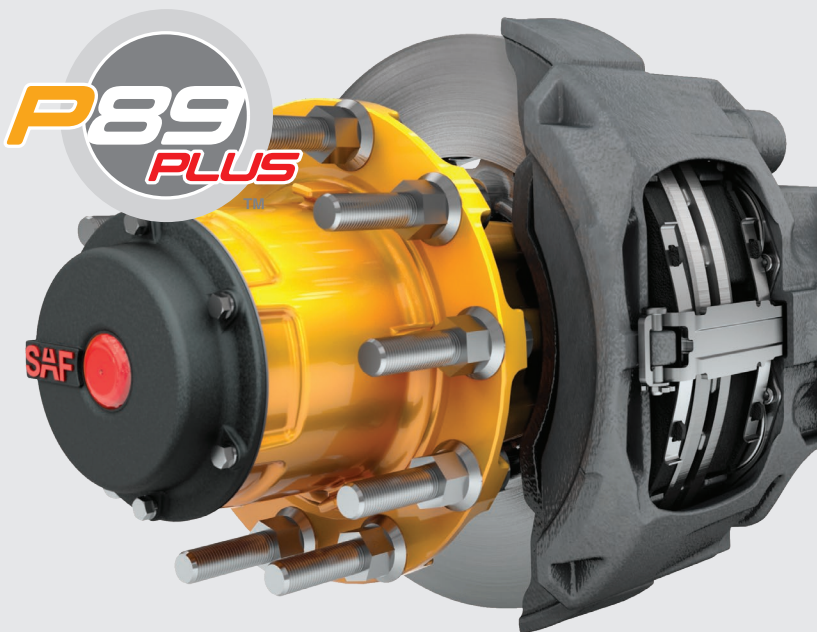


Premium Performance
Maintenance Free Design

Featuring the legendary INTEGRAL® rotor/hub and premium sealed bearings for reduced maintenance.

Featuring:

- INTEGRAL® rotor
- Long-life sealed bearings
- Premium brake chambers
- SAF caliper
- Robust parallel spindle
- Premium spindle nuts
- 7-Year warranty



OPTIONAL TIRE PILOT PLUS™

By PressureGuard - A Division of SAF-HOLLAND

Optional Tire Pilot Plus™ not only controls pressure through inflation, but also maintains equal pressure across all wheels and features high pressure relief for overinflated tires. The robust design sets it apart from competitive designs with durable components.

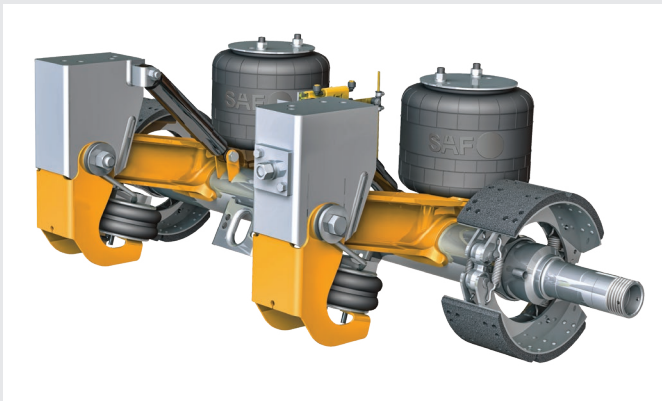
- Diamond knurled hose connections at both hubcaps and tire valve ends allow installation and replacement without a wrench.
- The stainless steel air hose connections are ported through the sides of the hubcap and are protected
- System warning light alerts the driver only when there is a need to immediately seek service.



IMPROVE PROFITABILITY
BY ENHANCING TIRE
LIFE, FUEL EFFICIENCY
AND UPTIME

OPTIONAL POSILIFT™ LIFT AXLE SYSTEM

POSILIFT™

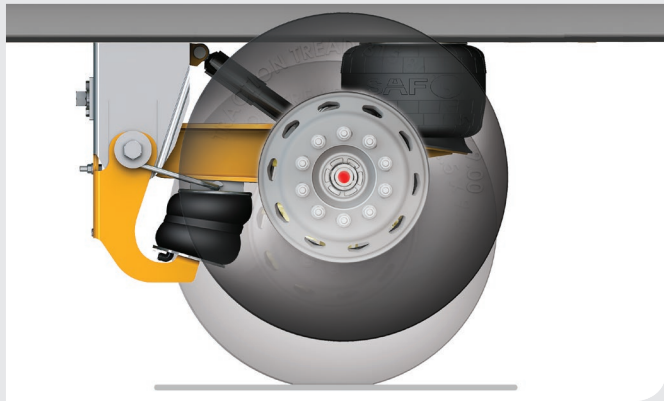


Light, Durable and Easy to Install
The SAF PosiLift™ Axle Lift System allows operators to easily increase payload with just the flip of a switch.

Featuring:

- Compact design
- Simple under axle lift
- Easy to install or retrofit
- Long life design stabilizing bar

AUTO POSILIFT™



Spec the Auto  PosiLift™ System –
Tested and proven to provide up to a 1% fuel savings!* Auto-PosiLift™ brings significant benefits to your bottom line.

The Auto-PosiLift™ feature is programmed through a Meritor WABCO ABS with lift axle control to automatically lift the front axle when the system senses that only one axle is necessary to carry the load.

* Fuel savings calculated per SAE J1526 Type III. Comparison of a less than loaded trailer with and without an Auto PosiLift™ system.

CBX SERIES SPECIFICATIONS

CBX SERIES

FEATURES	CBX23		CBX25	
	STANDARD	OPTIONS	STANDARD	OPTIONS
Ride Heights	14", 15", 16" & 17"	Upon Request	14", 15", 16", 17", 18" & 19"	Upon Request
Swing Align™	•		•	
Fully Assembled	•		•	
Height Control Valve with Dump		•		•
Height Control Valve without Dump		•		•
Air Springs with 1/4" Ports	•		•	
PosiLift™ Lightweight Lift Axle System		•		•

STANDARD DRUM BRAKE AXLE

STANDARD DRUM BRAKE AXLE	CBX23		CBX25	
Axle Diameter	5.75"	NA	5.75"	NA
Axle Wall Thickness	11 mm (.43")	9 mm (.35")***	11 mm (.43")	NA
Axle Track	71½"	77½", 81½", 83½" **	71½"	77½", 81½", 83½" **
Spindle	Tapered	Parallel	Tapered	Parallel
Drum Brake	16½" x 7"	16½" x 8⅝"	16½" x 7"	16½" x 8⅝"
Extended Life	SAF Standard 20k	SAF Standard 23k	SAF Standard 23k	931-162 23k
Tire Inflation Prep:	Drilled & Tapped Only	•		•
	Tire Pilot Plus™	•		•
	PSI	•		•
Cambered Axle		•		•
Cam Enclosures		•		•
Dust Shields		•		•
3 Pc. Spindle Nuts		•		•
Fully Dressed with ABS Sensors		•		•
Fully Dressed without ABS Sensors		•		•

OPTIONAL DISC BRAKE AXLE WITH P89 SERIES

	CBX23		CBX25	
Axle Diameter	5.75"	NA	5.75"	NA
Axle Wall Thickness	11 mm (.43")	9 mm (.35")*	11 mm (.43")	NA
Axle Track	71½"	77½", 81½", 83½" **	71½"	77½", 81½", 83½" **
Spindle	P89	NA	P89	NA
Fully Dressed with ABS Sensors Installed	•	NA	•	NA
Cambered Axle		•		•
Dust Shields		•	•	
Stud Length	Long	Short	Long	Short
Tire Inflation Prep:	Drilled & Tapped Only	•		•
	Tire Pilot Plus™	•		•
	PSI	•		•

*** 9mm wall X-Series axle is pre-approved only for CBX23 on flatbed on-highway, tandem axle (close spaced) trailer applications in United States and Canada. Call SAF-HOLLAND Engineering for other application approval.

** Other axle tracks available upon available.

CBX25	
STANDARD	OPTIONS
14", 15", 16", 17", 18" & 19"	Upon Request
•	
•	
	•
	•
•	
	•

CBX25/30	
5.75"	NA
11 mm (.43")	NA
71½"	77½", 81½", 83½" **
Tapered	Parallel
16½" x 7"	16½" x 8⅝"
SAF Standard 23k	931-162 23k
	•
	•
	•
	•
	•
	•
	•
	•
	•

CBX25/30	
5.75"	NA
11 mm (.43")	NA
71½"	77½", 81½", 83½" **
P89	NA
•	NA
	•
•	
Long	Short
	•
	•
	•

SUSPENSION SYSTEM WEIGHTS	CBX23	CBX25	CBX25/30
Undressed Drum Brake Axle (16.5" x 7" braked axle only – no slack adjusters or brake actuators)	529 lbs.	536 lbs.	553 lbs.
Dressed Drum Brake Axle (Includes steel hubs/drums, bearings, oil, slack adjusters and brake actuators)	914 lbs.*	933 lbs.*	950 lbs.*
P89 Disc Brake Axle	889 lbs.	908 lbs.	925 lbs.

*Optional lightweight dressed drum brake wheel ends available - 65 lbs. lighter.

APPLICATIONS

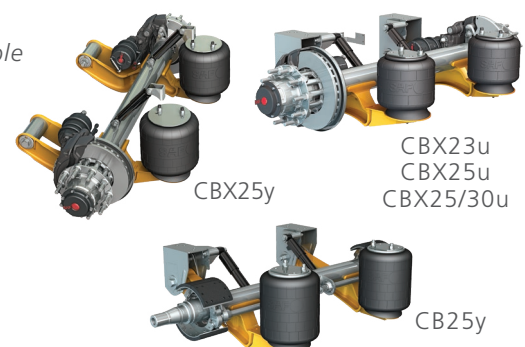
Versatile CBX Fixed Frame Series Suspensions are performance proven for specialty trailer applications.

- Platforms
- Dumps
- Specialty Vans
- Dry Bulk
- Liquid Tankers
- Livestock
- Michigan Trains
- Dollies & Pups
- Grain Hoppers
- Forestry Trailers
- Container Chassis
- B-Trains



SAF CBX low profile suspensions are available for drop deck and low boy applications.

NOTE: Small brake packages available (CBu and CBy Models).



SAF Holland Group



TRAILER AXLES AND
SUSPENSION SYSTEMS



COUPLING AND
LIFTING SYSTEMS



SUSPENSIONS FOR
TRUCKS AND BUSES



SUSPENSIONS AND
AXLE SYSTEMS



BUS AIR SUSPENSION
SYSTEMS



V. ORLANDI
TOWING
SYSTEMS



TRAILER AXLES/SUSPENSIONS,
COUPLING AND LIFTING
SYSTEMS

safholland.com

SAF-HOLLAND, Inc.

888.396.6501 Fax 800.356.3929

SAF-HOLLAND Canada Limited

519.537.3494 Fax 800.565.7753

Western Canada 604.574.7491 Fax 614.574.0244