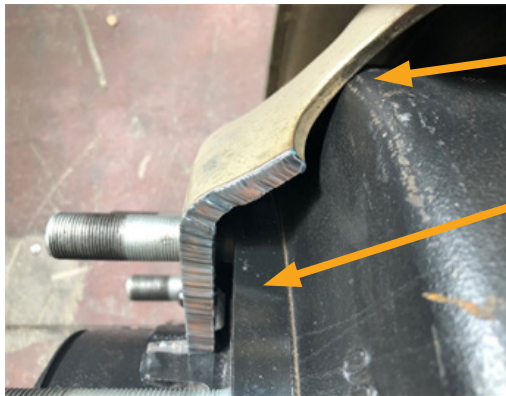


Insufficient Wheel Rim Clearance for SAF-HOLLAND Z9-4218 axle range

This service bulletin has been developed to help identify an offset discrepancy on some imported rims. These rims have been used on the Z9-4218 axle range and has resulted in reports of damage.

SAF-HOLLAND has been made aware of some rims that have been imported into Australia which have insufficient off set clearance to suit the Z9-4218 range. There have been incidents where the installation of incorrect rims, have resulted in damage to the brake drum. Refer below images. Care should always be taken during the installation of rims. This is to ensure there is the correct clearances of the rim and that they are properly seated against the hub face. So far the rims that have been found bear no identifiable manufacturer markings. Always follow manufactures recommendations when installing wheel ends and do not install rims that have incorrect clearances.



Wheel rim to brake drum clearance insufficient

Rim mounting surface gap, caused due to insufficient clearance of the rim



Tightening of wheel nuts resulted in damage to the drum

In the past SAF-HOLLAND has had issue reported involving the use of DOT-T and DOT-E standard rims. It is the responsibility of the installer to ensure correct clearances when installing rims.

Please direct all queries to SAF-HOLLAND Technical Services on (03) 9971 7900, or via e-mail at service@safholland.com.au