

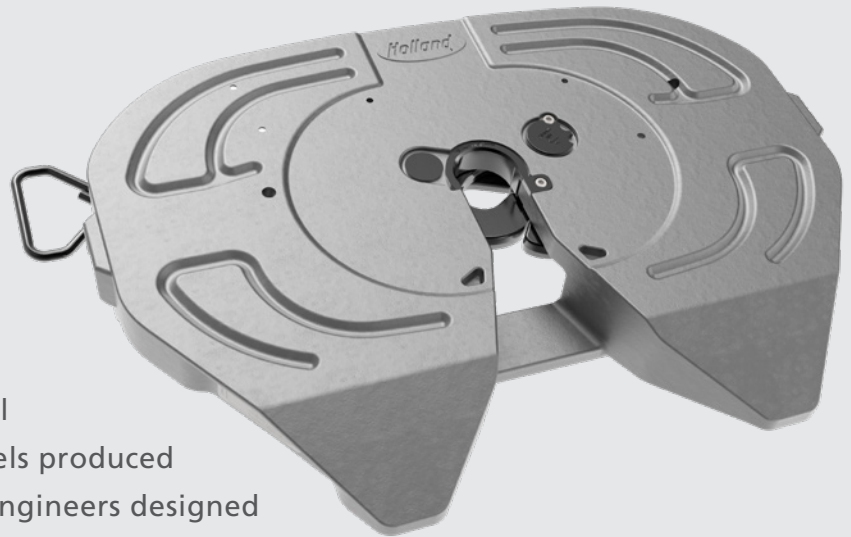
FW17 SERIES

THE LIGHTWEIGHT DUCTILE IRON FIFTH WHEEL
FOR ON-HIGHWAY APPLICATIONS

HOLLAND FW17 SERIES

THE LIGHTWEIGHT, COST EFFECTIVE CHOICE

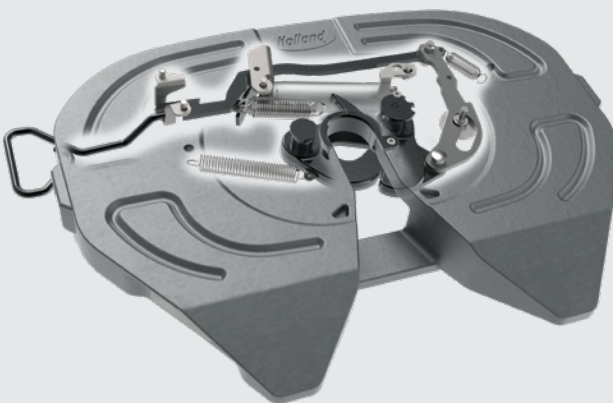
The redesigned FW17 is the latest fifth wheel from SAF-HOLLAND. The FW17 was optimized to take advantage of ductile iron, a material utilized on SAF-HOLLAND fifth wheels produced and sold in Europe. SAF-HOLLAND engineers designed the FW17 with a wider throat for easier coupling, improved kinematics for better performance, and made air release retrofits easier. The FW17 fifth wheel is the cost-effective, weight conscious choice for an on-highway fleet looking for distinctive performance.



SAF-HOLLAND TECHNOLOGY SETS US APART FROM THE REST

Since 1910, HOLLAND fifth wheels have been earning a reputation for exceptional durability, performance and reliability. Our technology aims to increase driver productivity and your bottom line, while keeping the HOLLAND FW17 the industry's "cost-effective choice".

IN-CAB AIR RELEASE



Air Release Option

Allows in-cab air release of the fifth wheel locking mechanism. With just a simple pull of a dash-mounted air switch, a pneumatic cylinder on the fifth wheel will effortlessly open the locking mechanism.

SIMPLE, EASY TO OPERATE, IN-CAB SYSTEM

Here's how it works.

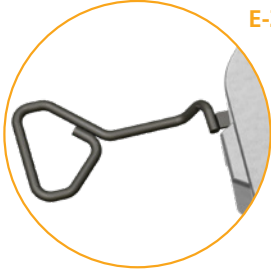
- Set the tractor parking brake to activate the system.
- Then operate the dash-mounted button to activate a pneumatic cylinder on the fifth wheel to open the lock.



The system allows manual release operation, if necessary.



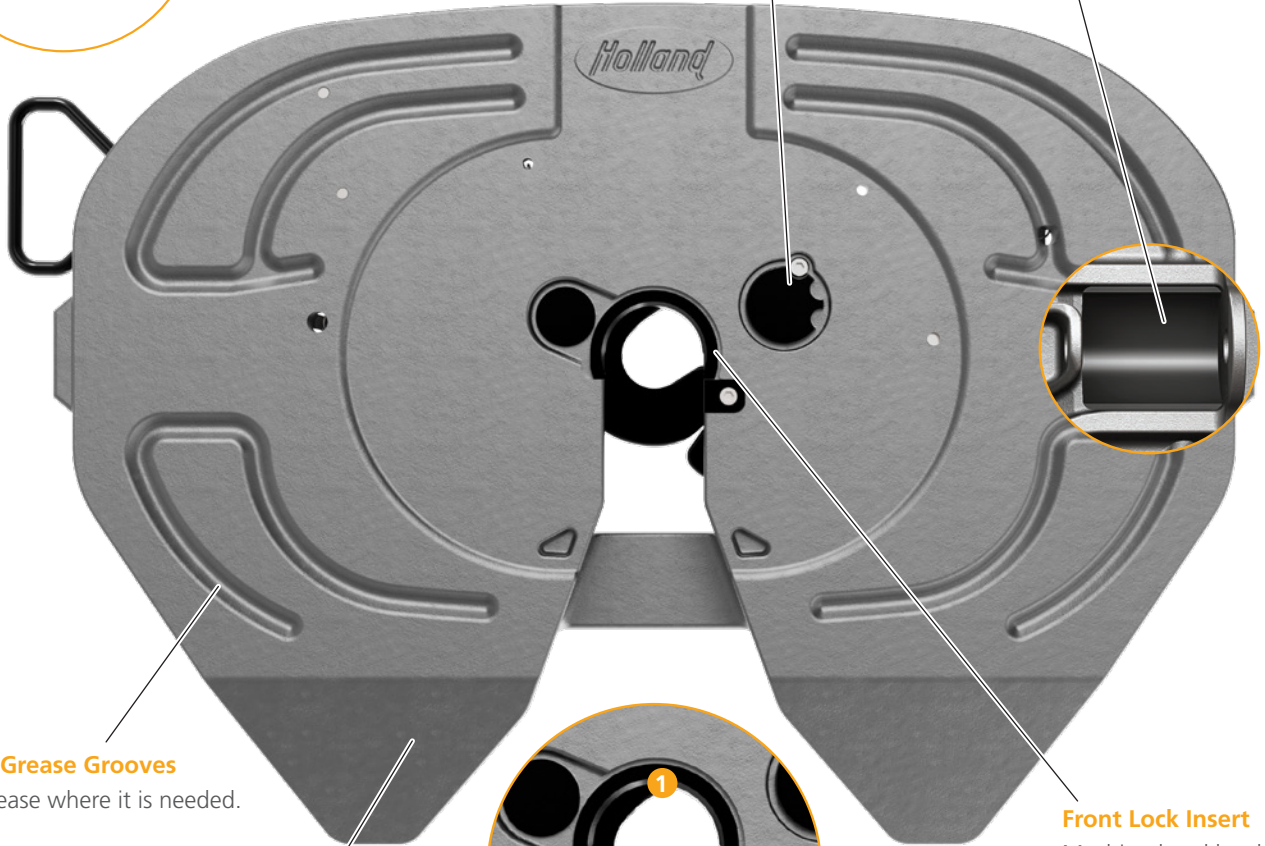
CAPACITY
50,000 lbs. (22,700 kg)
Maximum Vertical Load
150,000 lbs. (68,000 kg)
Maximum Drawbar Pull



E-Z Grip Release Handle
Requires minimum pull effort and drop design protects handle from damage caused by kingpin during a missed couple.

User Friendly Lock Adjustment System
Makes the adjustment process simple and readily accessible.

NoLube™
Articulation Pocket Liners
Come standard.



Cast-in Grease Grooves
Keep grease where it is needed.

Ductile Iron Top Plate
Provides optimum combination of durability and low weight.



Swing Lock

- 1 High coupling protection**
Lock system protects against coupling at an improper height.
- 2 Much greater kingpin-to-lock contact area,**
Over competitive models, for longer kingpin and lock life.
- 3 Forged/cast steel locks**
Rear lock is forged, hardened, and machined steel. Front lock is machined and hardened wear-resistant alloy.

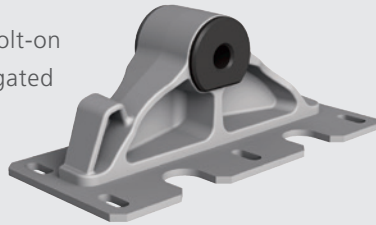
Front Lock Insert
Machined and hardened, wear-resistant alloy.

MOUNTING SYSTEMS STANDARD CAPACITY FIFTH WHEELS

Stationary Mount Brackets

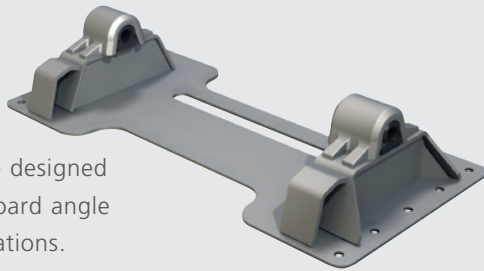
Foot Mount

Special base designed for bolt-on applications, utilizing corrugated mounting plates. Includes integral tilt stops.



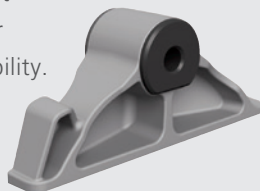
Integrated Plate Mount

Lightweight base designed for bolt-on outboard angle mounting applications.



Bracket for Angle Mounting

Designed for welding to angles at installation. Cast construction for maximum performance and durability. Includes integral tilt stops.



Other mounting systems available - see HOLLAND Fifth Wheel Specifications Guide XL-FW10066SG-en-US.

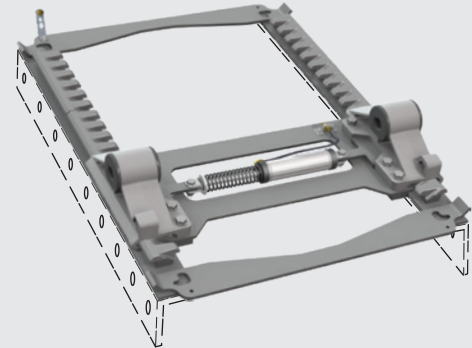
INTEGRATED LOW WEIGHT SUPER SYSTEM

ILS Slide Bracket & Plate Assemblies

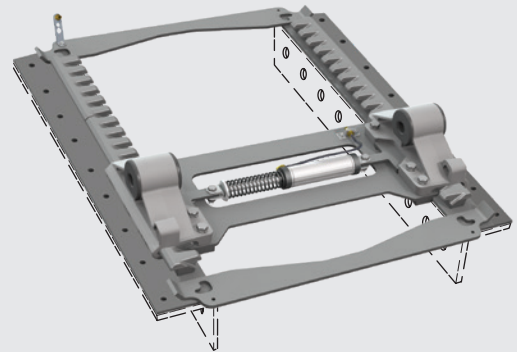
Low-weight, no welding modular base design, offering significant weight savings with easy height change.

- Single-piece, bolt-on cast bracket (low cost, low weight, and easily replaceable)
- Two-piece side cushioning "upshock" bushings
- Slide-on (no weld), repositionable bulk head fitting bracket.
- Same cylinder location on all heights (includes "quick-connect" fittings)
- 2" slide increments
- Universal "tie plate"

Inboard Mount



Outboard Mount



Other mounting systems available - see HOLLAND Fifth Wheel Catalog XL-FW10066SG-en-US for further information.

FW17 FIFTH WHEEL SPECIFICATIONS

FW17 Top Plate Only

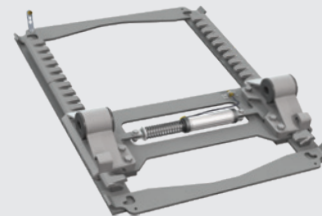
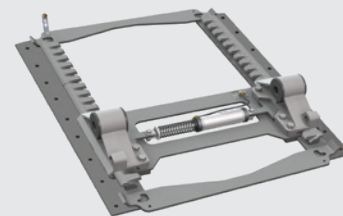
MODEL NUMBER	APPROX. WEIGHT
XA-171-A-L-P	204 lb /93 kg

Note: Top Plate weights listed include 5 lbs/2.25kg for mounting pins.



FW17 ILS™ Sliding Mount Fifth Wheel Models

OUTBOARD MOUNT			
MODEL NUMBER	NOMINAL F.W. HEIGHT	SLIDE TRAVEL	APPROX. WEIGHT
FW17A712XL00	7"	12"	396 lbs/180 kg
FW17A724XL00	7"	24"	430 lbs/195 kg
FW17A812XL00	8"	12"	402 lbs/182 kg
FW17A824XL00	8"	24"	435 lbs/197 kg
FW17A912XL00	9"	12"	406 lbs/184 kg
FW17A924XL00	9"	24"	439 lbs/199 kg
INBOARD MOUNT			
FW17H712XL00	7"	12"	377 lbs/171 kg
FW17H724XL00	7"	24"	404 lbs/183 kg
FW17H812XL00	8"	12"	382 lbs/173 kg
FW17H824XL00	8"	24"	409 lbs/185 kg
FW17H912XL00	9"	12"	386 lbs/175 kg
FW17H924XL00	9"	24"	413 lbs/187 kg

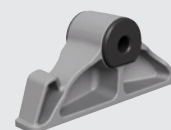
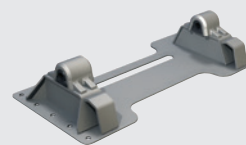
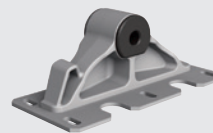


For Air Release option, add "80" to end of model number.

Example: FW17A712XL80.

FW17 Stationary Mount Fifth Wheel Models

FOOT MOUNT		
MODEL NUMBER	NOMINAL F.W. HEIGHT	APPROX. WEIGHT
FW17Y600XL00	6"	278 lbs/126 kg
FW17Y700XL00	7"	284 lbs/129 kg
FW17Y800XL00	8"	288 lbs/131 kg
FW17Y900XL00	9"	294 lbs/133 kg
INTEGRATED PLATE MOUNT		
FW17Z600XL00	6"	294 lbs/133 kg
FW17Z700XL00	7"	301 lbs/137 kg
FW17Z800XL00	8"	307 lbs/139 kg
FW17Z900XL00	9"	305 lbs/138 kg
BRACKETS ONLY FOR WELDING TO ANGLES		
FW17X600XL00	6"	249 lbs/113 kg
FW17X700XL00	7"	254 lbs/115 kg
FW17X800XL00	8"	259 lbs/117 kg
FW17X900XL00	9"	264 lbs/120 kg



For full specification information, see the *HOLLAND Fifth Wheel Specification Guide XL-FW10066SG-en-US*.



TRAILER AXLES AND
SUSPENSION SYSTEMS



COUPLING AND
LIFTING SYSTEMS



SUSPENSIONS FOR
TRUCKS AND BUSES



SUSPENSIONS AND
AXLE SYSTEMS



V. ORLANDI
TOWING
SYSTEMS



TRAILER AXLES/SUSPENSIONS,
COUPLING AND LIFTING
SYSTEMS

safholland.com

SAF-HOLLAND, Inc.
888.396.6501

SAF-HOLLAND Canada Limited
519.537.3494
Western Canada 604.574.7491

SAF-HOLLAND Mexico
52.55.5456.8641