



FWAL SERIES

THE PROVEN FWAL IS THE WORLD'S LIGHTEST
AND ONLY ALUMINUM FIFTH WHEEL

HOLLAND FWAL THE WORLD'S LIGHTEST FIFTH WHEEL

PRECISION BUILT FOR RELIABLE PERFORMANCE

Combine the proven reliability of HOLLAND fifth wheels with the leading technology of ALCOA forged aluminum, and the most innovative, lightweight fifth wheel in the world is created. Designed using master engineering, forging and machining technology, the FWAL is performance inspired to save weight and increase your bottom line with larger payloads.

LOW LUBE MAINTENANCE SAVINGS

The FWAL low lube design feature eliminates the use of grease on the top plate surface and between the top plate and bracket, reducing lubrication cost and time, extending maintenance intervals, and improving driver productivity while improving your bottom line.

The HOLLAND FWAL Series is guaranteed for 5 Years / 500,000 Miles to provide maximum operation performance.



5 Years
500,000 Miles

In the unlikely case of wear requiring lock mechanism replacement, SAF-HOLLAND will cover the cost of parts, labor and freight*

– Lube Plates carry a 2 Year / 200,000 Mile Performance Guarantee.

*Refer to warranty XL-FW10039WC for full details.

UP TO
100 LBS.
LIGHTER
VS
STANDARD-DUTY
EQUIVALENT

Patented Lock Release

Utilizes patented lever arm design to minimize pull effort required.

NoLube™

Articulation Pocket Liners

Provide smooth articulation with reduced maintenance.

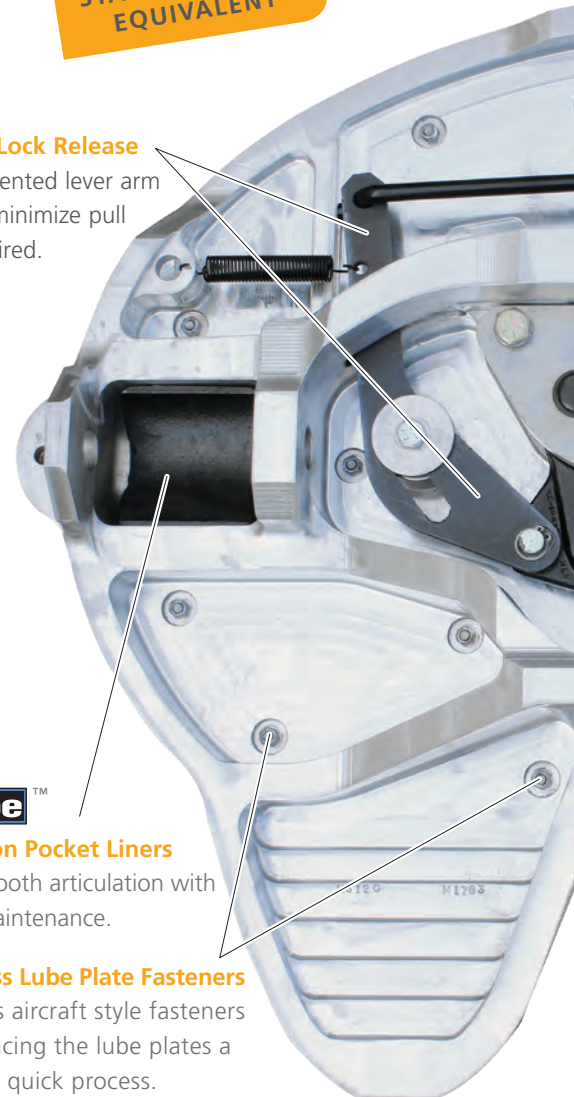
Easy Access Lube Plate Fasteners

Easy access aircraft style fasteners make replacing the lube plates a simple and quick process.

CAPACITY

55,000 lbs. (25,000 kg)
Maximum Vertical Load

150,000 lbs. (68,000 kg)
Maximum Drawbar Pull





Air Release Option

Allows in-cab air release of the fifth wheel locking mechanism. With just a simple pull of a dash-mounted air switch, a pneumatic cylinder on the fifth wheel will effortlessly open the locking mechanism.



E-Z Grip™ Release Handle

Required minimum effort and drop design protects handle from damage caused by kingpin during a missed couple. Provides automatic secondary lock to assure safety.



Front Lock Insert

Machined and hardened, wear-resistant alloy.



Swing Lock

Rear lock is forged, hardened steel; front lock is hardened alloy for durability. Precision machined to protect from high coupling for enhanced reliability.

Precision Machining

Machined from solid billet of high strength aluminum.



Advanced lube Plate Design

Polyethylene material molded around a honeycomb pattern steel-reinforcement plate to create a wear, peel, and warp resistant lube plate.

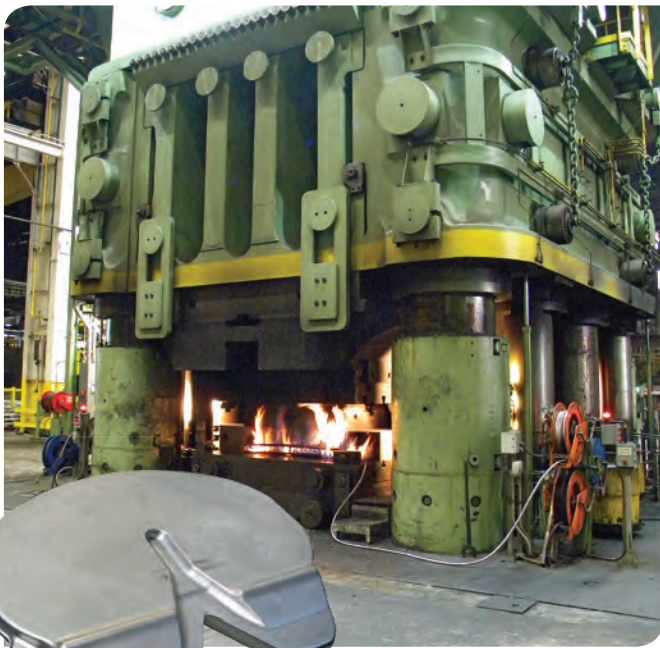


- 1 High coupling protection**
Lock system protects against coupling at an improper height.
- 2 Much greater kingpin-to-lock contact area**
Larger contact area compared to competitive models, for longer kingpin and lock life.
- 3 Forged/cast steel locks**
Rear lock is forged, hardened, and machined steel. Front lock is machined and hardened wear-resistant alloy.
- 4 Lock adjustment system**
Adjustment process is simple and readily accessible.



FORGED ALUMINUM TECHNOLOGY

ALCOA is the trusted leader in the aerospace and defense industries for ultra-strong, yet lightweight aluminum technology. The FWAL is built with the same aluminum grade as military tank and truck wheels. It is then forged in a 35,000 ton press and precision machined for unmatched strength and weight savings.



WEIGHT SAVINGS = INCREASED PAYLOAD

* Numbers shown are for example purposes only. Substitute in your own numbers to calculate what your yearly payload increase could be.

WEIGHT SAVINGS = INCREASED PAYLOAD

WHAT DOES -100 LBS. MEAN?

<u>FUEL TANKER</u>	<u>BULK HAULER</u>
$+1 \text{ gal} = -6.4 \text{ lbs.}$ $\text{FWAL} = -100 \text{ lbs.}$ $\div -6.4 \text{ lbs.}$ $= +15.6 \text{ gal./haul}$ $15.6 \times 365 \times 3$ $\text{gal. days hauls/day}$ $=$ <u><u>+17,082 gal./yr.*</u></u>	$\text{FWAL} = -100 \text{ lbs.}$ $100 \times 365 \times 2$ $\text{lbs. days hauls/day}$ $=$ <u><u>+73,000 lbs./yr.*</u></u>



The FWAL is Approved For All On-Highway Standard Duty Applications

Tanker

Fuel | Propane | Natural Gas | Cryogenic | Milk | Chemical

Bulk Hauler

Grain | Concrete | Plastics

Beverage

Intermodal

Dry Van

Reefer

FWAL FIFTH WHEEL SPECIFICATIONS

UP TO 100 LBS. LIGHTER THAN COMPETITIVE MODELS**

FWAL Weight Comparison (lbs.)*


Bracket Style	HOLLAND FWAL	Competitor A	Weight Savings FWAL	Competitor B	Weight Savings FWAL
Integrated Plate Mount	258	339	81	331	73
Outboard 24" Travel Slider	383	469	86	485	102

* All weights for 8" height

** Weight comparison savings were calculated from competition's published weights for low lube models. Contact SAF-HOLLAND for additional details on weight saving calculations.

FWAL Top Plate Only

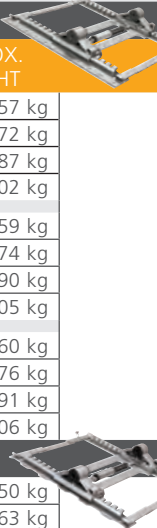
MODEL NUMBER	APPROX. WEIGHT
XA-AL-A-L-P	157 lb / 71 kg



Note: Top Plate weights listed include 5 lbs/2.25 kg for mounting pins.

FWAL ILS™ Sliding Mount Fifth Wheel Models

OUTBOARD MOUNT			
MODEL NUMBER	NOMINAL F.W. HEIGHT	SLIDE TRAVEL	APPROX. WEIGHT
FWALA712XL00	7.3"	12"	345 lbs/157 kg
FWALA724XL00	7.3"	24"	378 lbs/172 kg
FWALA736XL00	7.3"	36"	412 lbs/187 kg
FWALA748XL00	7.3"	48"	445 lbs/202 kg
FWALA812XL00	8.3"	12"	349 lbs/159 kg
FWALA824XL00	8.3"	24"	383 lbs/174 kg
FWALA836XL00	8.3"	36"	417 lbs/190 kg
FWALA848XL00	8.3"	48"	450 lbs/205 kg
FWALA912XL00	9.3"	12"	353 lbs/160 kg
FWALA924XL00	9.3"	24"	387 lbs/176 kg
FWALA936XL00	9.3"	36"	420 lbs/191 kg
FWALA948XL00	9.3"	48"	454 lbs/206 kg
INBOARD MOUNT			
MODEL NUMBER	NOMINAL F.W. HEIGHT	SLIDE TRAVEL	APPROX. WEIGHT
FWALB712XL00	7.3"	12"	330 lbs/150 kg
FWALB724XL00	7.3"	24"	358 lbs/163 kg
FWALB736XL00	7.3"	36"	386 lbs/175 kg
FWALB748XL00	7.3"	48"	414 lbs/188 kg
FWALB812XL00	8.3"	12"	335 lbs/152 kg
FWALB824XL00	8.3"	24"	363 lbs/165 kg
FWALB836XL00	8.3"	36"	391 lbs/178 kg
FWALB848XL00	8.3"	48"	419 lbs/190 kg
FWALB912XL00	9.3"	12"	339 lbs/154 kg
FWALB924XL00	9.3"	24"	367 lbs/167 kg
FWALB936XL00	9.3"	36"	395 lbs/180 kg
FWALB948XL00	9.3"	48"	423 lbs/192 kg




For Air Release option, add "80" to end of model number.
Example: FWALA712XL80.

For full specification information, see the *HOLLAND Fifth Wheel Specification Guide XL-FW10066SG*.

FWAL Stationary Mount Fifth Wheel Models

FOOT MOUNT		
MODEL NUMBER	NOMINAL F.W. HEIGHT	APPROX. WEIGHT
FWALY600XL00	6.3"	227 lbs/103 kg
FWALY700XL00	7.3"	233 lbs/106 kg
FWALY800XL00	8.3"	238 lbs/108 kg
FWALY900XL00	9.3"	2243 lbs/110 kg
FOOT MOUNT		
MODEL NUMBER	NOMINAL F.W. HEIGHT	APPROX. WEIGHT
FWALZ600XL00	6.3"	243 lbs/110 kg
FWALZ700XL00	7.3"	251 lbs/114 kg
FWALZ800XL00	8.3"	258 lbs/117 kg
FWALZ900XL00	9.3"	2549 lbs/1156 kg
BRACKETS ONLY FOR WELDING TO ANGLES		
MODEL NUMBER	NOMINAL F.W. HEIGHT	APPROX. WEIGHT
FWALX600XL00	5.9"	198 lbs/90 kg
FWALX700XL00	6.9"	204 lbs/93 kg
FWALX800XL00	7.9"	209 lbs/95 kg
FWALX900XL00	8.9"	214 lbs/97 kg
BRACKETS WITH MOUNTING ANGLES		
MODEL NUMBER	NOMINAL F.W. HEIGHT	APPROX. WEIGHT
FWALW600GL00*	6.3"	256 lbs/116 kg
FWALW700GL00*	7.3"	262 lbs/119 kg
FWALW800GL00*	8.3"	267 lbs/121 kg
FWALW900GL00*	9.3"	272 lbs/124 kg



* Standard angle dimensions – 4" x 4" x .38" x 36"
"G" equals 34" frame width; for other widths, replace "G" with proper frame width code letter. Contact a SAF-HOLLAND representative for assistance.

FIFTH WHEEL FRAME WIDTH CODE CHART					
FRAME WIDTH	CODE	FRAME WIDTH	CODE	FRAME WIDTH	CODE
33.25"	A	33.75"	E	34.25"	J
33.38"	B	33.88"	F	34.38"	K
33.50"	C	34.00"	G	34.50"	L
33.62"	D	34.12"	H		

SAF Holland Group



TRAILER AXLES AND
SUSPENSION SYSTEMS



COUPLING AND
LIFTING SYSTEMS



SUSPENSIONS FOR
TRUCKS AND BUSES



SUSPENSIONS AND
AXLE SYSTEMS



BUS AIR SUSPENSION
SYSTEMS



V.ORLANDI
TOWING
SYSTEMS



TRAILER AXLES/SUSPENSIONS,
COUPLING AND LIFTING
SYSTEMS

safholland.com

SAF-HOLLAND, Inc.

888.396.6501 Fax 800.356.3929

SAF-HOLLAND Canada Limited

519.537.3494 Fax 800.565.7753

Western Canada 604.574.7491 Fax 614.574.0244