

Product Change Notice for HOLLAND FWAL Aluminum Fifth Wheel Service Parts

This product change notice impacts service parts for HOLLAND aluminum fifth wheel assemblies (FWAL) and top plates (XA-AL).

Effective with shipments April 2013

Please Note:

SAF-HOLLAND has implemented an enhanced top plate design for HOLLAND aluminum fifth wheel assemblies (FWAL) and top plates (XA-AL). There are no changes to fit, function or assembly or top plate part numbers, however some service parts have changed.

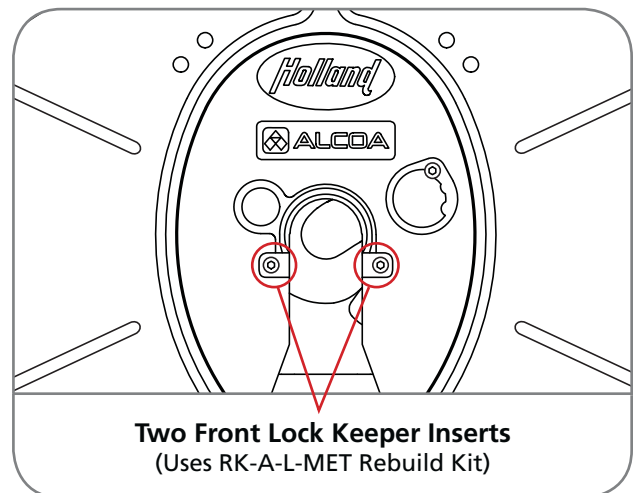
Description of changes:

1. An additional keeper insert has been designed into the top plate for better wear resistance.
2. Fasteners have been converted to metric for commonality.
3. A new shim ring was added to help with the fit of the adjustment pin (Item No. 36).

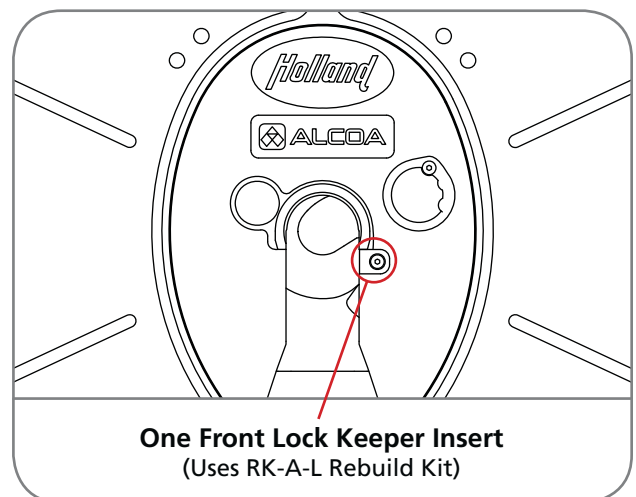
A new rebuild kit has been created for the new style top plate (RK-A-L-MET). You can visually identify the difference between the new style and old style top plates by determining the number of keeper inserts. If the fifth wheel has two keeper inserts, it is the new style and it requires kit number RK-A-L-MET. If the fifth wheel only has one keeper insert, it is the old style and it requires kit number RK-A-L. Please see the 'NEW STYLE' and 'OLD STYLE' figures on right for a visual representation of the change.

A detailed parts breakdown is provided on the next page. The parts highlighted are those that have changed.

NEW STYLE

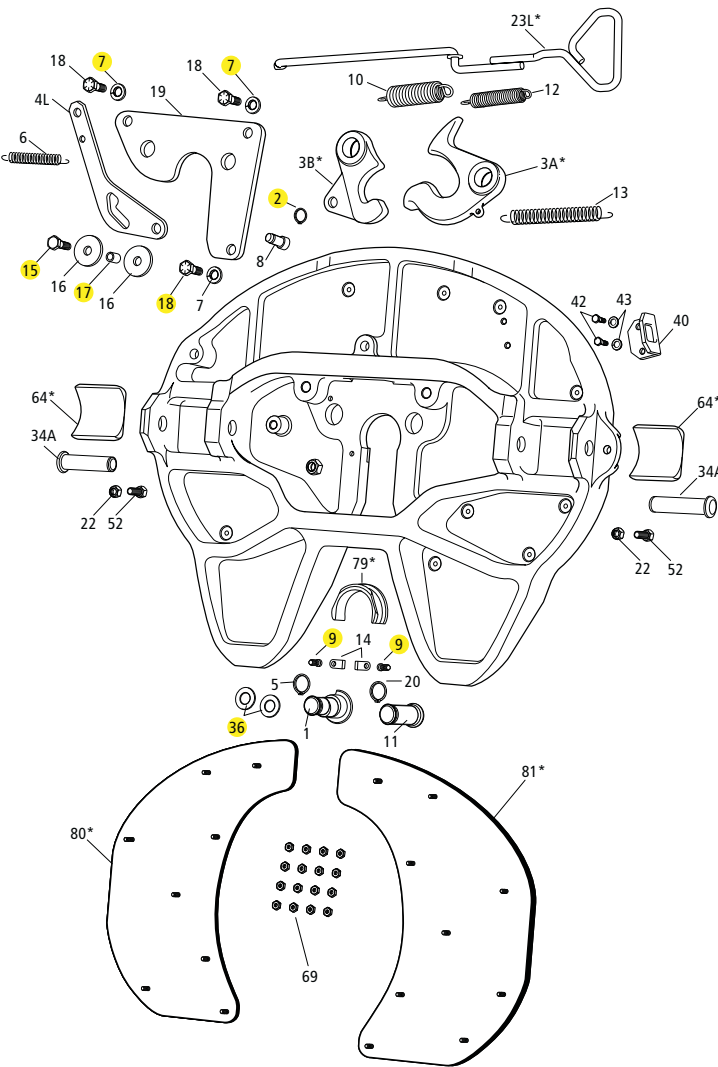


OLD STYLE



Product Change Notice for HOLLAND FWAL Aluminum Fifth Wheel Service Parts

Note: The highlighted parts are for the new style design.



FWAL PARTS LIST			
ITEM	DESCRIPTION	PART NUMBER	QTY.
1	Pin, Adjusting	XA-10364-3-AL-P	1
2	Retaining Ring, .75" Dia.	XB-05855-1	1
3A*	Lock Jaw, See RK-AL-11078	XA-10486-E-P	1
3B*	Hook, See RK-171-11078	XA-10487-P	1
4L	Release Cam, Left-Hand Release	XA-10483-AL	1
5	Retaining Ring, 1.13" Dia.	XB-05855	1
6	Spring, Extension, Release Cam	XB-10563-1-P	1
7	Washer, Lock, M16, Type B	XB-LW-M16-Z	3
8	Pin, Hook	XA-10485-1	1
9	LHSCS, M10 x 1.5 x 16 mm, Class 10.9	XB-02724-M	3
10	Spring, Extension, Inner Handle	XB-10489-P	1
11	Pin, Lock	XA-06344-AL	1
12	Spring, Extension, Outer Handle	XB-10490-P	1
13	Spring, Extension, Lock	XB-05843-1-P	1
14	Insert Keeper	XA-10706-P	2
15	HHCS, M12 x 1.75 mm x 40 mm, Class 10.9	XB-HCS-M12-40-Z	1
16	Washer, .53" I.D. x 2.25" O.D., Stainless Steel	XB-10294	2
17	Roller, .49" I.D. x .68" O.D. x .53" Long	XA-10810	1
18	HHCS, M16 x 50 mm, Class 10.9	XB-HCS-M16-50-Z	3
19	Plate, Bottom	XA-11038	1
20	Retaining Ring, 1.38" Dia.	XB-08905	1
22	Lock Nut, .50"-20 GR C	XB-T-69-A	2
23L*	Release Handle, Left-Hand, See RK-10495-AL-P	XA-10495-AL-P	1
34A	Pin, Bracket	XE-06356-P	2
36	Shim Ring	XB-05859-2	2
40	Release Handle Plate, Dolly, See RK-AL-L	XA-11039-P	1
42	HHCS, .38"-16 x 1" GR 5	XB-C-38-C-1	2
43	Washer, Lock, .38" I.D. x .68" O.D.	XB-T-61	2
52	HHCS, .50"-20 x 1.25" GR 5	XB-C-95	2
64*	Pocket Insert, See RK-PKT-3	XD-10923	2
69	Lock Nut, .31"-18 GR B	XB-08931	16
79*	Front Lock Insert, See RK-AL-10680	XD-10680-P	1
80*	Lube Plate, Left-Hand	XA-08125-L	1
81*	Lube Plate, Right-Hand	XA-08125-R	1

*Not sold individually - must be purchased in kit.