



MOV-ON™ ELEVATING FIFTH WHEEL

HYDRAULIC ELEVATING FW2800 AND 2900 FIFTH WHEEL
CONVERTS A STANDARD ROAD TRACTOR FOR LOW-COST,
EFFICIENT YARD SPOTTING, SWITCHING AND HAULING

HOLLAND MOV-ON™ HYDRAULIC ELEVATING FIFTH WHEEL



CAPACITY

50,000 lbs (22,700 kg) – Single Cylinder
 100,000 lbs (45,400 kg) – Twin Cylinder
 Maximum Vertical Load

Designed to convert a standard road tractor into a low-cost yard spotting application for more efficient yard shuttling by **eliminating the need to raise the trailer landing gear.**

APPLICATIONS

Truck fleet terminals, rail yard piggyback operations, marine terminal container handling, interplant freight, industrial material handling and shipping.

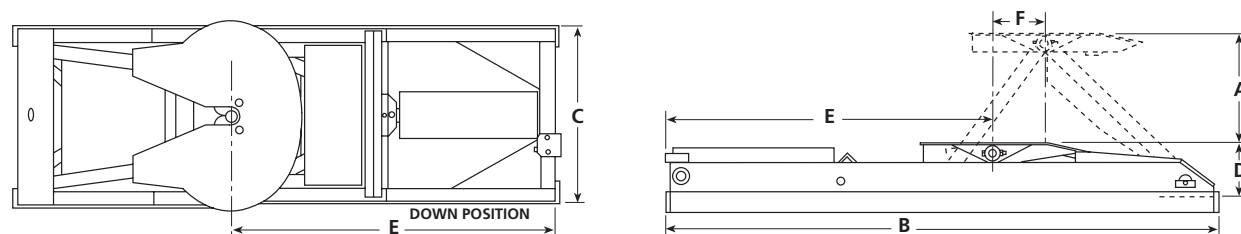
WHEN EXTRA CAPACITY IS A MUST

- Available with single cylinder (50,000 lbs. lift capacity) and twin cylinder (100,000 lbs. lift capacity).
- A variety of lift heights – 14", 15", 18.5" and 19.5".
- Equipped with 8" I.D. double action hydraulic cylinders (pump up/pump down). Cold weather won't affect lowering of fifth wheel.
- Optional air operated lift control kit for ease of operation.
- Rigid, rugged construction. Weight is carried directly over the tractor frame for maximum support and efficient load distribution.
- HOLLAND TwinLock™, specially designed for the excessive lock/unlock demands of the yard tractor. Locks are forged alloy steel, machined and heat treated for maximum wear and toughness.
- Ease of maintenance – bushed pivot points easily accessible grease fittings.
- For frequent over-the-road usage on public streets or highways, the FW2800-X and FW2900-X models are available with a lock down option (specify Option Code "87").

Note: Mounting angles, oil tank and filter included with basic unit.



FW2900-5X SHOWN
(Twin Cylinder Model)



SPECIFICATIONS

DESCRIPTION	MODEL	A	LIFT CAPACITY	B		C	D	E	F	MINIMUM* CAB-ANGLE		APPROX. WEIGHT
		NOMINAL LIFT HEIGHT		WITH MOUNTING	WITHOUT ANGLES	BASE WIDTH	HEIGHT DOWN	FRAME FRONT	SWING LENGTH	96" WIDE	102" WIDE	
Single Cylinder	FW2800-X	19.19"	50,000 lbs.	103.00"	101.31"	34.00"	9.88"	61.50"	9.38"	74.0"	77.0"	1,661 lbs.
Single Cylinder with Lock Down	FW2800-X-87	17.90"	50,000 lbs.	103.00"	101.31"	34.00"	11.13"	61.63"	9.16"	74.0"	76.0"	1,722 lbs.
Single Cylinder	FW2900-X	13.88"	50,000 lbs.	89.00"	86.62"	34.00"	9.88"	50.20"	5.88"	70.0"	73.0"	1,523 lbs.
Single Cylinder with Lock Down	FW2900-X-87	12.50"	50,000 lbs.	89.00"	86.62"	34.00"	11.13"	50.44"	5.56"	70.0"	73.0"	1,584 lbs.
Twin Cylinder	FW2800-5X	18.50"	100,000 lbs.	108.00"	106.00"	34.00"	11.75"	66.31"	9.88"	74.0"	77.0"	2,105 lbs.
Twin Cylinder	FW2900-5X	15.00"	100,000 lbs.	95.38"	93.38"	34.00"	11.13"	57.07"	6.75"	71.0"	74.0"	1,920 lbs.

* C.A. dimension (cab-to-axle): Distance from tractor cab to centerline of axle or tandem bogie. C.A. dimensions in chart are recommended minimums and are based on 96" or 102" wide, square-nosed trailers with 36" kingpin settings. When minimum C.A. is used, the fifth wheel must be mounted ahead of the rear axle or bogie centerline a distance equal to "F" dimension. If unit is to be mounted further ahead, a longer C.A. tractor must be used. Note: The kingpin (fifth wheel fore-aft pivot center) must be ahead of the rear axle or bogie center when in the fully raised position. For desired fifth wheel installed height, it may be necessary to reduce tire size, install full pickup ramps, or remove spring leaves to achieve desired fifth wheel heights when coupling.

FEATURES

- Bearing areas and moving parts are oversized to minimize wear.
- P.T.O. ratio of 1:1 recommended for all units; 100% of engine RPM.
- 17 GPM (at 1300 rpm) pump provided with single cylinder units.
- 20 GPM (at 1300 rpm) pump provided with twin cylinder units. Both systems designed to operate at 1800 psi maximum.
- Equipped with manual secondary lock.

HYDRAULIC LIFT ACCESSORIES

- RK-2800-11-G Hydraulic control valve for all single cylinder models.
- RK-2800-20-G Hose and fittings for single cylinder models.
- RK-2800-30-G Hose and fittings for twin cylinder models.
- RK-2800-41-G Hydraulic control valve and flange kits for twin cylinder models.
- RK-2800-52 Air/hydraulic operated lift control kit for all models (optional).

WARNING: ONLY MODELS FW2800-X-87 AND FW2900-X-87 WITH MANUAL SECONDARY LOCK AND LIFT LOCK DOWN ARE DESIGNED FOR USE ON PUBLIC STREET OR HIGHWAYS. THE MANUAL SECONDARY LOCK MUST BE ENGAGED TO PREVENT ACCIDENTAL DISENGAGEMENT OF THE TRAILER KINGPIN. FAILURE TO ENGAGE THE MANUAL SECONDARY LOCK AND LOCK DOWN LIFT MECHANISM PER HOLLAND OPERATING PROCEDURES MAY RESULT IN TRACTOR-TRAILER SEPARATION WHICH, IF NOT AVOIDED, COULD RESULT IN DEATH OR SERIOUS INJURY.



TRAILER AXLES AND
SUSPENSION SYSTEMS



COUPLING AND
LIFTING SYSTEMS



SUSPENSIONS FOR
TRUCKS AND BUSES



SUSPENSIONS AND
AXLE SYSTEMS



V. ORLANDI
TOWING
SYSTEMS



TRAILER AXLES/SUSPENSIONS,
COUPLING AND LIFTING
SYSTEMS

safholland.com

SAF-HOLLAND, Inc.
800.876.3929

SAF-HOLLAND Canada Limited
519.537.3494
Western Canada 604.574.7491

SAF-HOLLAND Mexico
52.55.5456.8641