



Important Info – October 2019

HOLLAND Fifth Wheels

Retirement Notice for the Following HOLLAND Fifth Wheels:

- FW0100 with 2.00" Kingpin
- FW0165 with 2.00" Kingpin
- FW2080 with 2.00" Kingpin

Attention

SAF-HOLLAND® is announcing the discontinuation of the HOLLAND FW0100, FW0165 and FW2080 fifth wheels for both OEM and Aftermarket customers. ONLY 2.00" kingpins models are affected. Models with 3.5" kingpins will not be affected by this retirement.

Effective

January 1st, 2020 - No new orders will be accepted.

Service parts will be available through the SAF-HOLLAND Aftermarket for a limited time.

Assemblies affected by this retirement consist of:

Top Plates

- XA-101-DAS
- XA-101-DAUS
- XA-0116-1S
- XA-2081-DA-P

Assemblies

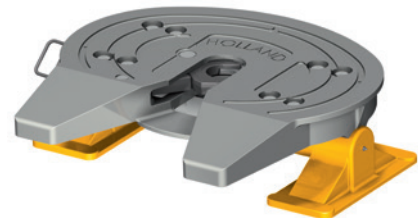
- FW0100-D
- FW0100-DC
- FW0165-0091-1
- FW2080-D

The SAF-HOLLAND sales team is communicating with customers who currently specify the FW0100, FW0165 and FW2080 fifth wheels models with 2.00" kingpins concerning the retirement of the products.

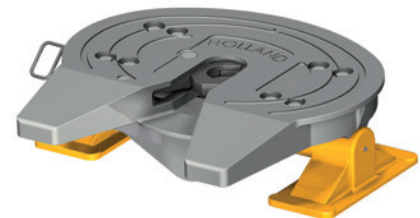
If you have any questions or require additional product assistance, please contact your account manager or customer service representative.

Discontinued Effective January 1st, 2020

FW0100 with 2.00" Kingpin



FW0165 with 2.00" Kingpin



FW2080 with 2.00" Kingpin

