

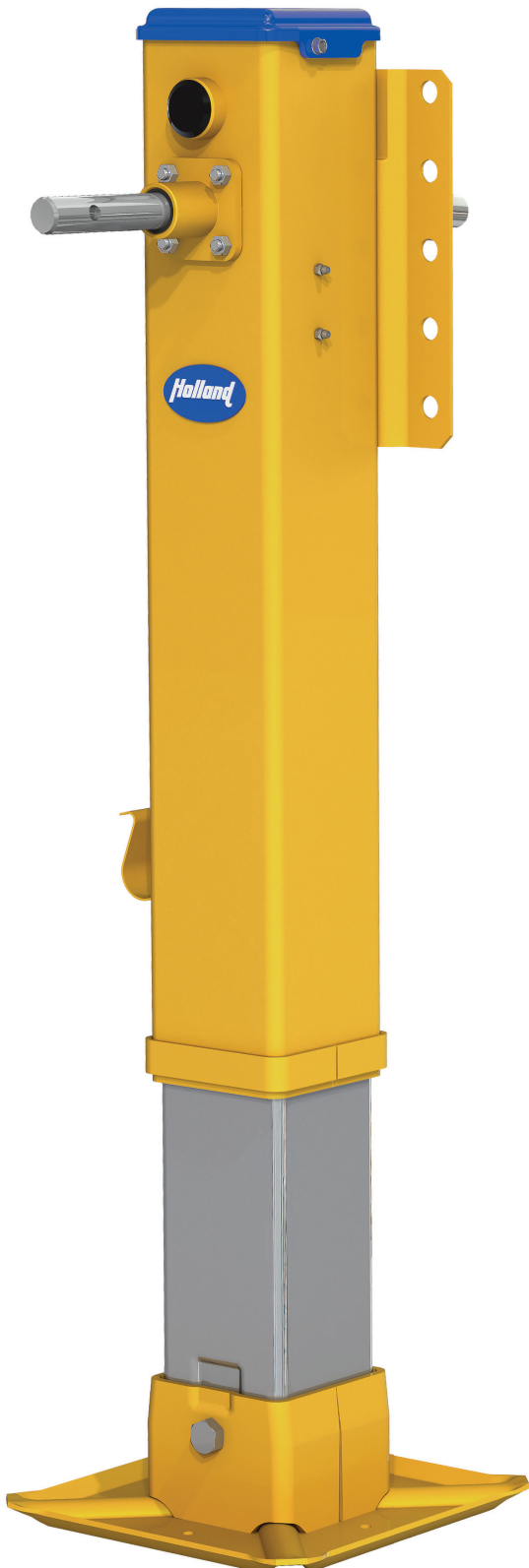


SATURN 62 iM™

DESIGNED SPECIFICALLY FOR CONTAINER CHASSIS TRAILERS – THE FIRST INTERNAL GEAR BOX LEG WITH FEATURES EXCLUSIVE ONLY TO HOLLAND LANDING GEAR

HOLLAND SATURN 62 iM™ LANDING GEAR

ENGINEERED WITH
DURABILITY IN MIND
FOR CONTAINER
CHASSIS TRAILERS



INDUSTRY-LEADING STANDARD FEATURES

Heavy-Duty Cast Steel Cap

- Robust design for durability and long life
- Features a premium gasket seal, in place of silicone sealant

Robust 10-Bolt Formed Mounting Plate

- 10-bolt plate keeps leg square and securely attached to chassis trailer
- Universal mounting plate bolt pattern for easy upgrade to the SATURN 62 iM™

Internal Gear Train

- Completely sealed internal gear box
- Prevents damage to the gear train when stacking trailers
- Single reservoir for gear lubrication

Premium Double-Lip Shaft Seals

- Keeps contaminants out and grease in

FloatingNut™ with Twin-Bulkhead Design*

- Exclusive FloatingNut™ feature protects against elevating screw damage, assuring smooth cranking performance
- Reinforced Twin-Bulkhead design for added strength when leg is fully extended

NoLube™ Elevating Screw

- Automatically keeps the elevating screw lubricated and working smoothly
- Manually greasing the elevating screw is no longer required

80 ksi Yield High-Strength Steel Leg Tube Material

- Maximum strength upper and lower tube housing for robust performance
- The industry's strongest and lightest weight tube housing material

Removable Cushion Foot

- Built-in rubber cushion protects the landing gear leg and internal mechanisms from load impact shock



Black Armour® Metal Treatment

- Treatment process, unlike paint or powder coating, means the ultimate in corrosion protection with no rust creep

SPECIFICATIONS

62,500 lbs. Lift Capacity
170,000 lbs. Load Capacity
33,000 lbs. Side Load Capacity

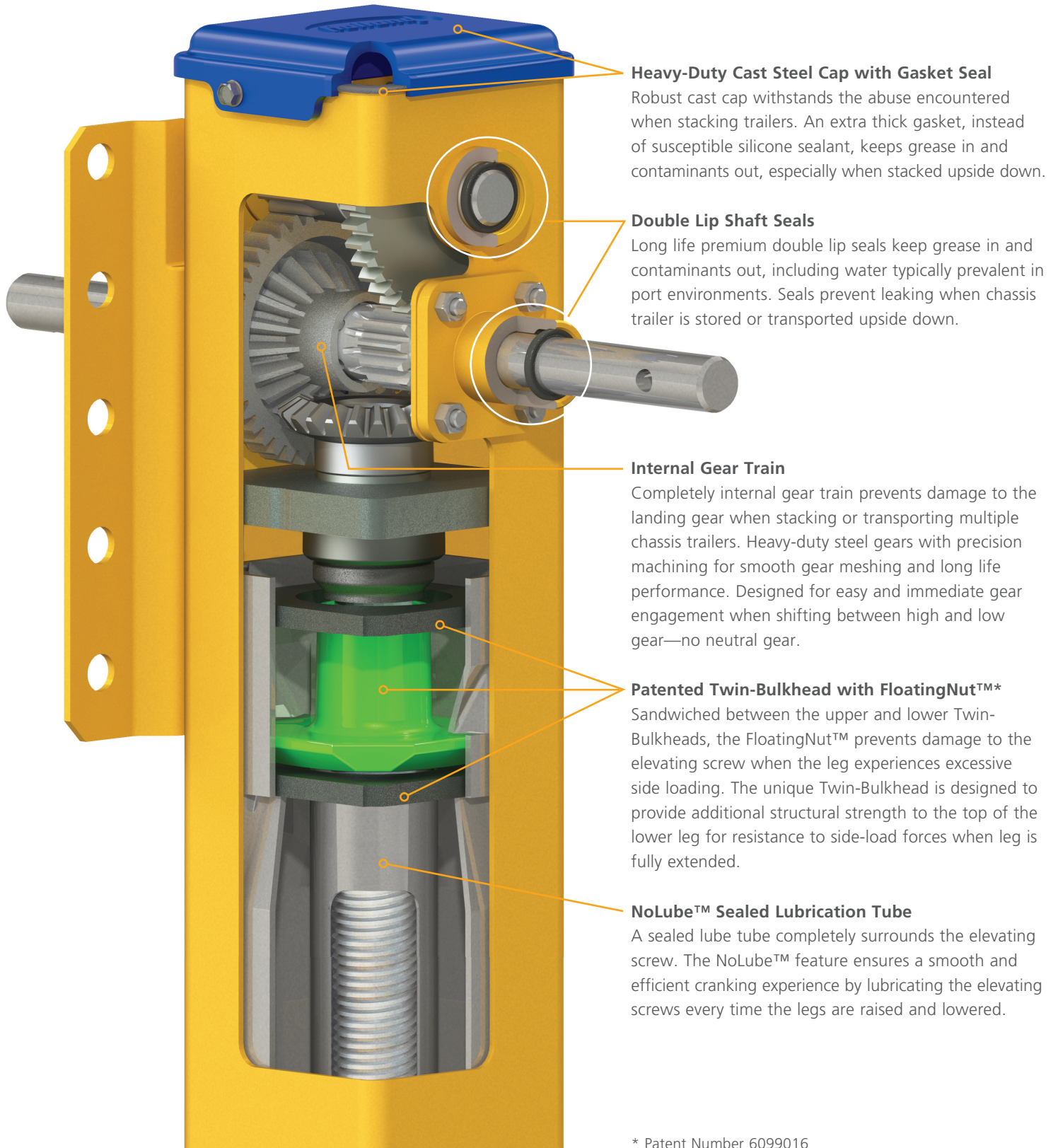
Weight: 185 lbs.
(17" Travel, RCF Footware, and
NoLube feature – less hardware)

GEARING

3.5 Turns Per Inch – High Gear
39 Turns Per Inch – Low Gear

*All specified capacities are tested in
accordance with AAR M-931.*

ROBUST LIFTING AND LOAD CARRYING FEATURES



Heavy-Duty Cast Steel Cap with Gasket Seal
Robust cast cap withstands the abuse encountered when stacking trailers. An extra thick gasket, instead of susceptible silicone sealant, keeps grease in and contaminants out, especially when stacked upside down.

Double Lip Shaft Seals
Long life premium double lip seals keep grease in and contaminants out, including water typically prevalent in port environments. Seals prevent leaking when chassis trailer is stored or transported upside down.

Internal Gear Train
Completely internal gear train prevents damage to the landing gear when stacking or transporting multiple chassis trailers. Heavy-duty steel gears with precision machining for smooth gear meshing and long life performance. Designed for easy and immediate gear engagement when shifting between high and low gear—no neutral gear.

Patented Twin-Bulkhead with FloatingNut™*
Sandwiched between the upper and lower Twin-Bulkheads, the FloatingNut™ prevents damage to the elevating screw when the leg experiences excessive side loading. The unique Twin-Bulkhead is designed to provide additional structural strength to the top of the lower leg for resistance to side-load forces when leg is fully extended.

NoLube™ Sealed Lubrication Tube
A sealed lube tube completely surrounds the elevating screw. The NoLube™ feature ensures a smooth and efficient cranking experience by lubricating the elevating screws every time the legs are raised and lowered.

* Patent Number 6099016



SATURN 62 iM™

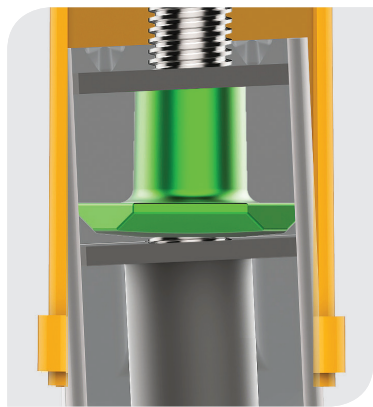
The HOLLAND SATURN 62 iM™ has been specifically designed for Intermodal Container Chassis trailers. SAF-HOLLAND engineers incorporated all the proven, robust features found with HOLLAND landing gear to come up with a new model that stands up to demanding intermodal operations. The SATURN 62 iM™ sports a streamlined leg design with the gear train neatly tucked away inside the upper leg housing for protection. PLUS, the SATURN 62 iM™ includes the exclusive FloatingNut™ feature for the added benefit of protecting the elevating screw. Standard features include the removable cushion foot to protect the leg from load impact shock, and a NoLube™ elevating screw lube tube.

HOLLAND EXCLUSIVE FLOATINGNUT™ FEATURE FOR LONGER SERVICE LIFE

Cranking a landing gear with a bent elevating screw can be an extremely unpleasant experience. Unlike competitive landing gear, the SATURN 62 iM™ has an exclusive special feature to prevent a bent elevating screw from happening.

The FloatingNut™ feature is located within the Twin-Bulkhead at the top of the lower leg housing. It works to protect the elevating screw from damage that can be caused by excessive side-load forces experienced during coupling, uncoupling, and container loading.

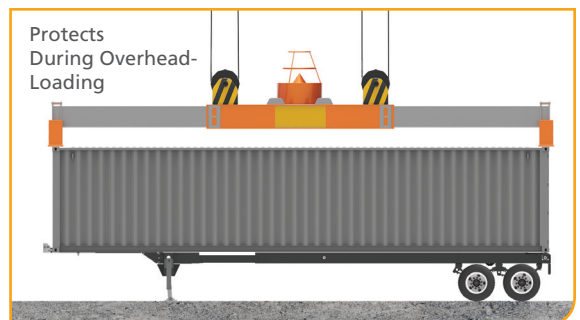
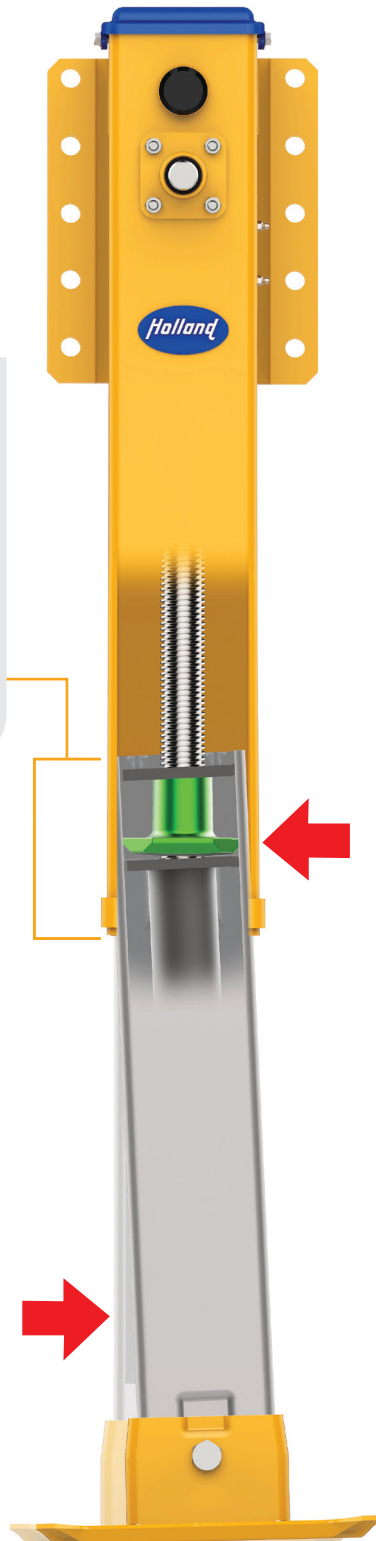
Designed to protect the elevating screw from excessive side load forces.



Twin-Bulkhead design with the FloatingNut™ feature

When excessive side-load forces occur on the landing gear when fully extended, the FloatingNut™ allows the lower leg to move within the upper leg housing without causing permanent damage to the elevating screw.

The unique Twin-Bulkheads, above and below the FloatingNut™, provide additional structural strength to the top of the lower leg tube.



SAF *Holland* Group



TRAILER AXLES AND
SUSPENSION SYSTEMS



COUPLING AND
LIFTING SYSTEMS



SUSPENSIONS FOR
TRUCKS AND BUSES



SUSPENSIONS AND
AXLE SYSTEMS



BUS AIR SUSPENSION
SYSTEMS



V. ORLANDI
TOWING
SYSTEMS



TRAILER AXLES/SUSPENSIONS,
COUPLING AND LIFTING
SYSTEMS

safholland.com

SAF-HOLLAND, Inc.

888.396.6501 Fax 800.356.3929

SAF-HOLLAND Canada Limited

519.537.3494 Fax 800.565.7753

Western Canada 604.574.7491 Fax 614.574.0244