

**SAF**  *Holland* **NEWAY**

# VOCATIONAL PRODUCTS

PRODUCTS PROVEN TO MEET THE DEMANDS OF  
VOCATIONAL-DUTY OPERATIONS FOR TRUCKS,  
TRACTORS AND TRAILERS

# THERE'S A WORLD OF **VOCATIONAL PRODUCT SOLUTIONS** FROM SAF-HOLLAND



LEADING THE WORLD WITH INNOVATIVE SAF SUSPENSION SYSTEMS FOR HEAVY AND SEVERE-DUTY APPLICATIONS



## ***SAF TRAILER SUSPENSION AND AXLE SYSTEMS***

SAF leading edge technology and innovations have pushed performance, durability and extended service-life, in severe-duty applications, to new heights. With a wide range of air and mechanical trailer axle and suspension systems, SAF suspensions provide many solutions to fit off-highway applications.



FOR OVER A CENTURY THE WORLD HAS DEPENDED ON HOLLAND FOR DURABILITY AND PERFORMANCE



## ***HOLLAND FIFTH WHEELS, KINGPINS, LANDING GEAR AND COUPLING PRODUCTS***

The HOLLAND name is globally recognized for quality and dependability. HOLLAND Brand products include the most diverse model line-up available today for severe-duty applications. From frigid Canada, to the blistering Middle East to the Australian Outback, HOLLAND can be found around the world.



FOR SEVERE-DUTY SOLUTIONS BUILT FOR THE ROUGHEST JOBS ON EARTH, RIDE WITH NEWAY



## ***NEWAY POWER VEHICLE SUSPENSIONS***

NEWAY drive-axle suspensions have set the benchmark for toughness, durability and performance in severe-duty applications. The standard in severe-duty performance for decades, NEWAY suspensions are built to take on some of the toughest, roughest jobs on earth, from oil fields, to mining, to logging and heavy-haul applications.

# PRODUCT SOLUTIONS FOR VOCATIONAL VEHICLES



STANDARD TO SEVERE FIFTH WHEELS WITH SLIDING OR STATIONARY MOUNTING SYSTEMS



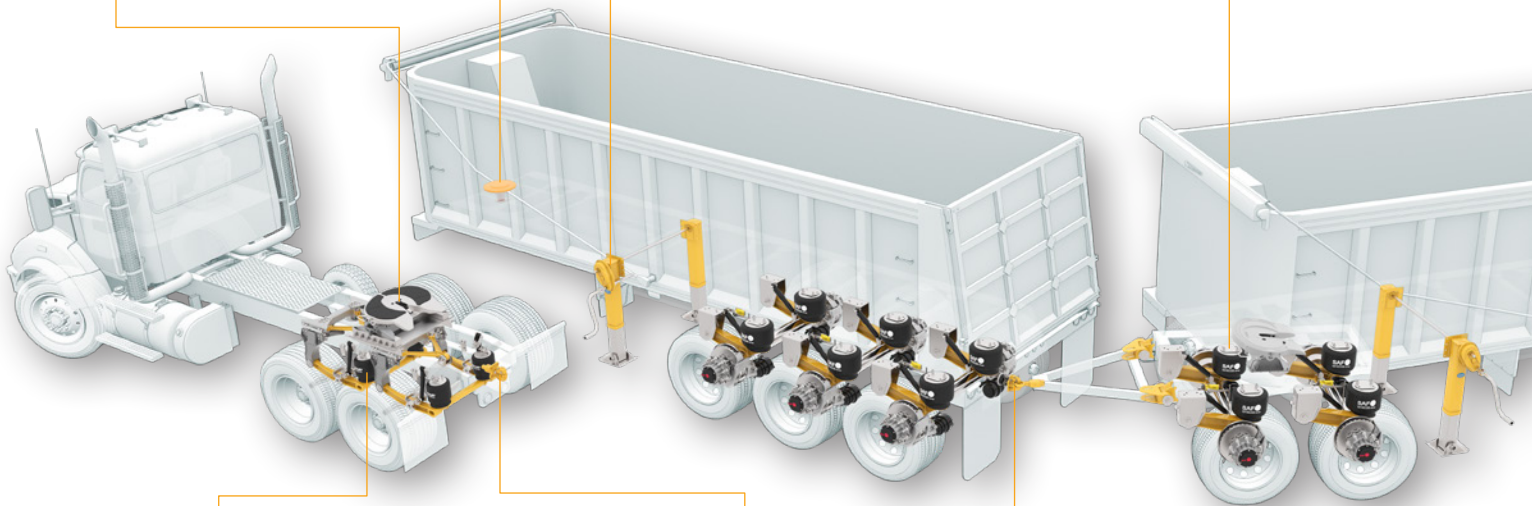
WELD-ON AND REPLACEABLE KINGPINS



STANDARD OR HEAVY-DUTY LANDING GEARS



AIR-RIDE SUSPENSION AXLE SYSTEMS WITH P89 AIR DISC BRAKES



HEAVY AND SEVERE-DUTY DRIVE AXLE AIR-RIDE SUSPENSIONS



HEAVY AND SEVERE-DUTY SWIVEL MOUNT PINTLE HOOKS



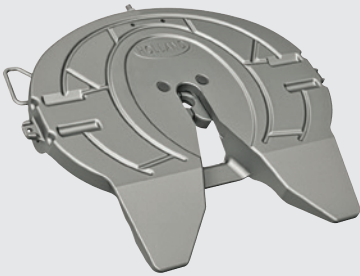
RIGID MOUNT PINTLE HOOK AND DRAWBAR COUPLINGS



GRAVEL / DUMP - OIL FIELD - HEAVY HAUL - CONCRETE MIXER - CONSTRUCTION / BLOCK HAULER - MINING - LOGGING - HEAVY CONSTRUCTION - CONCRETE PUMPER - REFUSE (ROLL-OFF) - UTILITY TRUCK - TOW VEHICLE / WRECKER

# VOCATIONAL FIFTH WHEELS

Medium to Severe-Duty Models with Exceptional Durability and Reliable Performance.



## FW35 THE WORLD'S MOST VERSATILE AND PROVEN

### CAPACITY:

**55,000 lbs.** (25,000 kg) Max Vertical Load  
**150,000 lbs.** (68,000 kg) Max Drawbar Pull

- Durable Cast Steel Top Plate
- Proven Lock System Design
- Stationary or Sliding Mount



## FW33 VERSATILITY WITH LOW-LUBE TECHNOLOGY

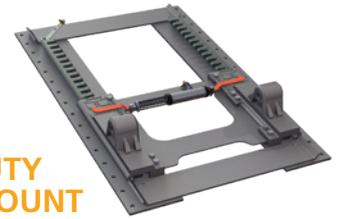
### CAPACITY:

**55,000 lbs.** (25,000 kg) Max Vertical Load  
**150,000 lbs.** (68,000 kg) Max Drawbar Pull

- Reduces Lubrication Cost and Time
- Extends Maintenance Intervals
- Stationary or Sliding Mount

## STATIONARY AND SLIDING MOUNTING SYSTEMS

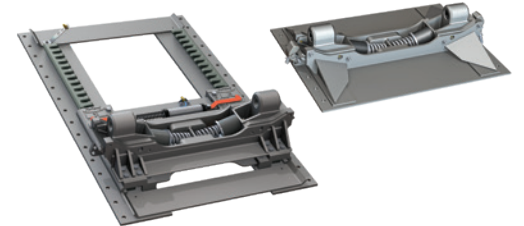
For vocational applications



## SEVERE-DUTY SLIDING MOUNT

Robust design for vocational trailer applications that require fifth wheel repositioning.

*Available with FW70 Top Plate Only*



## KOMPENSATOR®

### CRADLE MOUNT DESIGN RELIEVES TORSIONAL STRESS FOR RIGID TRAILERS

Reduces trailer torque and twist transfer through the fifth wheel. Available in Sliding or Stationary.

*SDS Kompensator Available with FW35, FW31, and FW70 Top Plates*



## SEVERE-DUTY SLIDING NO-TILT & STATIONARY NO-TILT

### RIGID, FIFTH WHEEL MOUNT LOCKS TO PREVENT ARTICULATION

Allows fifth wheel top plate to convert to a rigid no-tilt fifth wheel for applications where articulation is provided on the trailer.

*SDS No-Tilt Available with FW70 Top Plate Only*

*Inboard and outboard mounts available for all systems shown.*

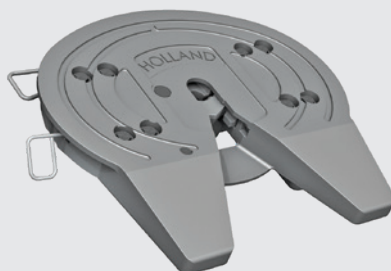


## FW70

### CAPACITY:

**70,000 lbs.** (31,751 kg) Max Vertical Load  
**200,000 lbs.** (90,718 kg) Max Drawbar Pull- Stationary Mount  
**150,000 lbs.** (68,000 kg) Max Drawbar Pull- Sliding Mount

- Robust Cast Steel Construction
- Forged, Heat-Treated Lock Jaw
- 3-1/2" Kingpin Lock Available
- Stationary or Sliding Mount



## FW0100/FW0165

### CAPACITY:

**100,000 lbs.** (45,359 kg) Max Vertical Load  
**165,000 lbs.** (74,842 kg) Max Vertical Load  
**200,000 lbs.** (90,718 kg) Max Drawbar Pull

- Severe-Duty Cast Steel Construction
- Easy Infinite Lock Adjustment
- Stationary Mount
- 3-1/2" Kingpin Only

*Other models and mounting options available. Refer to Fifth Wheel Catalog XL-FW10066SG.*

## KINGPINS

High Impact and Wear Resistant for Dependable Severe-Duty Service.

### HOLLAND KINGPINS ARE AVAILABLE IN:

- Mushroom and Double-Spool Configurations
- A Variety of Upper Coupler Thicknesses
- Weld-On or Replaceable Designs
- SAE 2" and SAE 3.5" Diameter Models



# VOCATIONAL LANDING GEARS

Designed with the Durability and Lifting Power Necessary for Vocational Trailers.



## Black Armour Metal Treatment

Treatment process, unlike paint or powder coating, means the ultimate in corrosion protection with no rust creep.



## MARK V™

**WHEN YOU DEMAND THE BEST IN ALL AROUND PERFORMANCE**

### CAPACITY:

**200,000 lbs.** (90,718 kg) Static Vertical Load  
**32,000 lbs.** (1,514 kg) Side-Load Capacity  
**62,500 lbs.** (28,350 kg) Lift Capacity

- Heavy-Duty Gearbox
- Double-D Crank Handle Connection
- Large 5-1/8" Square Upper Tube Housing
- Heavy-Duty, One Piece Inner Tube

## MARK V™ HD

**EXCEEDS THE STANDARDS FOR STRENGTH, DURABILITY, AND EASE OF LIFT**

### CAPACITY:

**200,000 lbs.** (90,718 kg) Static Vertical Load  
**46,000 lbs.** (20,865 kg) Side-Load Capacity  
**62,500 lbs.** (28,350 kg) Lift Capacity

- Three large, In-line High-strength Crank Gears
- Heavy-Duty Thrust Bearings for Smooth Operation
- Large 1-5/8" Dia. Double lead Elevating Screw

# VOCATIONAL TOW COUPLING PRODUCTS

Heavy, Severe-Duty Rigid and Swivel-Mount Coupling Products for Heavy-Haul Trucks and Trailers in On/Off-Road Operations.



## PH-775SL11 NoLube™

**SWIVEL-MOUNT PINTLE HOOK**

### CAPACITY:

**100,000 lbs.** (45,360 kg) Gross Trailer Weight  
**20,000 lbs.** (9,072 kg) Max Vertical Load

- Swivel-Mount for Off-Road Articulation
- No Lubrication Required
- PH-775SL21 – tethered lock pin model



## PH-990ST71

**SWIVEL MOUNT PIN AND CLEVIS COUPLER**

### CAPACITY:

**100,000 lbs.** (45,360 kg) Gross Trailer Weight  
**3,000 lbs.** (1,360 kg) Max Vertical Load

- 'Fish-Mouth' Design Aids Direct Coupling
- Rubber Cushioned for Shock Absorption



## PH-405

**AIR CUSHIONED PINTLE HOOK**

### CAPACITY:

**100,000 lbs.** (45,360 kg) Gross Trailer Weight  
**20,000 lbs.** (9,072 kg) Max Vertical Load

- Austenitic Manganese Steel Alloy Body for wear resistance
- Fast Latch™ for Easy, One-Handed Operation

## DB-100FQ1 BOLT-ON FLANGE MOUNT DRAWBAR

### CAPACITY:

**100,000 lbs.** (45,360 kg) Gross Trailer Weight  
**20,000 lbs.** (9,072 kg) Max Vertical Load

- Heat Treated for Strength and Wear Resistance
- 3" (76 mm) Eye
- 40K and 60k GTW Models Available



## DB-610-30 WELD-ON, SWIVEL MOUNT DRAWBAR ASSEMBLY

### CAPACITY:

**85,000 lbs.** (38,556 kg) Gross Trailer Weight  
**500 lbs.** (227 kg) Max Vertical Load

- Heat Treated Drawbar for Strength and Wear Resistance
- 3" (76 mm) Eye
- Steel Block Housing with Built-in Grease Zerk



Other coupling products available. Refer to Coupling Products Catalog XL-PH10397SG.

# TRAILER AIR SUSPENSION SYSTEMS

CBX Fixed Frame Suspensions Series Provide a Model for Most Vocational Trailers and CBX Underslung and Yoke Mount Suspensions for Low Profile Application.

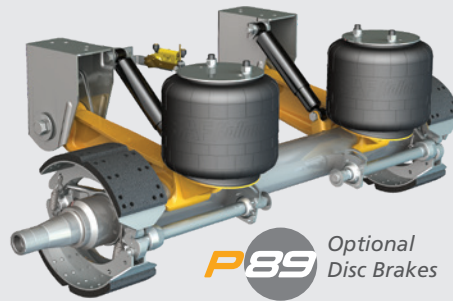


SAF CBX Series suspension/axle systems provide low overall system weights and greater application adaptability.

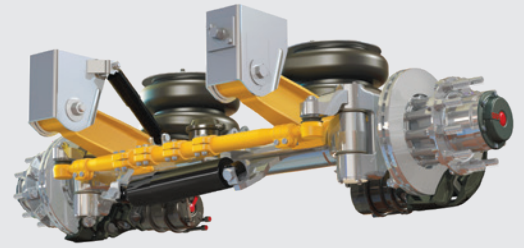
The SAF CBX Series self steering axle suspension addresses SPIF regulations and lift capabilities required for multi-axle trailers.



SAF-HOLLAND's advanced corrosion protection is standard on all CBX Series suspensions.



**P89** Optional Disc Brakes



## SELF STEER AXLE STEER AXLE FOR MULTI-AXLE TRAILERS

### CAPACITIES:

25,000 lbs. (11,340 kg)

30,000 lbs. (13,608 kg)\*

- Meets Canadian SPIF Compliance
- Wheel Cuts of 20° or 25-30° for Greater Maneuverability
- Optional SAF P89 Disc Brakes
- SAF X-Series 5.75" Axle
- Optional CBL (Center Bag Lift) Lightweight Lift Axle System

## CBX SERIES LIGHTWEIGHT COMPACT DESIGN IN TOP MOUNT, UNDERSLUNG AND YOKE MOUNT MODELS

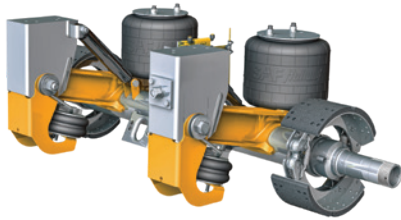
### CAPACITIES:

23,000 lbs. (10,433 kg)

25,000 lbs. (11,340 kg)

30,000 lbs. (13,608 kg)\*

- SwingAlign™ Axle Alignment System
- Optional SAF INTEGRAL® P89 Disc Brakes
- SAF X-Series 5.75" Axle
- Optional PosiLift™ Axle Lift System



CBX25 Shown with  
Optional PosiLift™



CBXu Series  
Underslung Suspension



CBXy Series  
Yoke Mount Suspension  
(CBy Small Drum Brake Package)

\* CBX25/30 Models rated for 30,000 lbs. of load carrying at creep speed and 25,000 lbs. capacity for on-highway operations. Creep speed is defined as 5 mph or less.

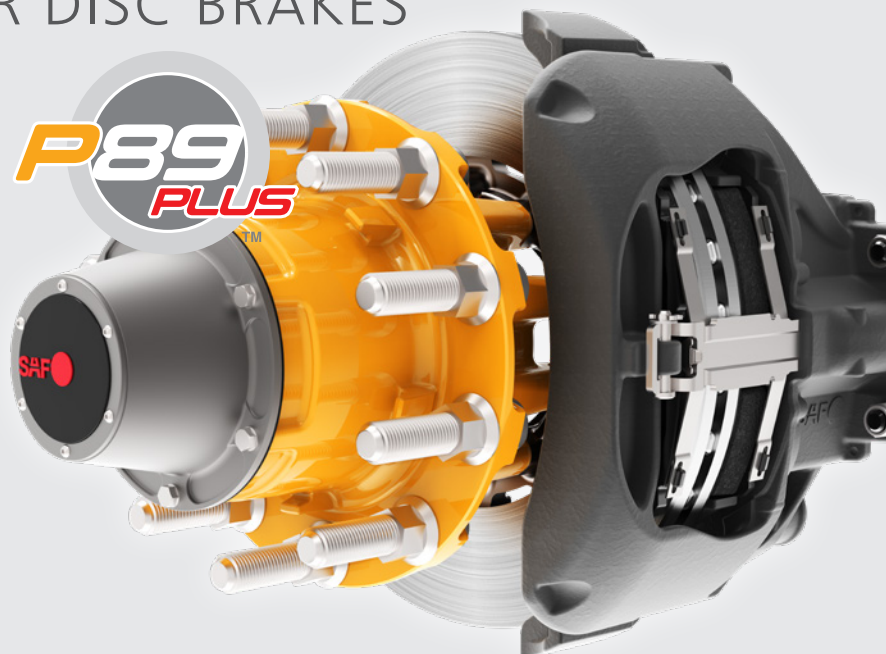
## OPTIONAL P89 PLUS AIR DISC BRAKES

Premium Performance  
Maintenance Free Design

Featuring the legendary INTEGRAL® rotor/hub and premium sealed bearings for reduced maintenance.

### Featuring:

- Robust parallel spindle
- Long-life sealed bearings
- Premium brake chambers
- SAF caliper
- Premium spindle nuts
- 7-Year warranty

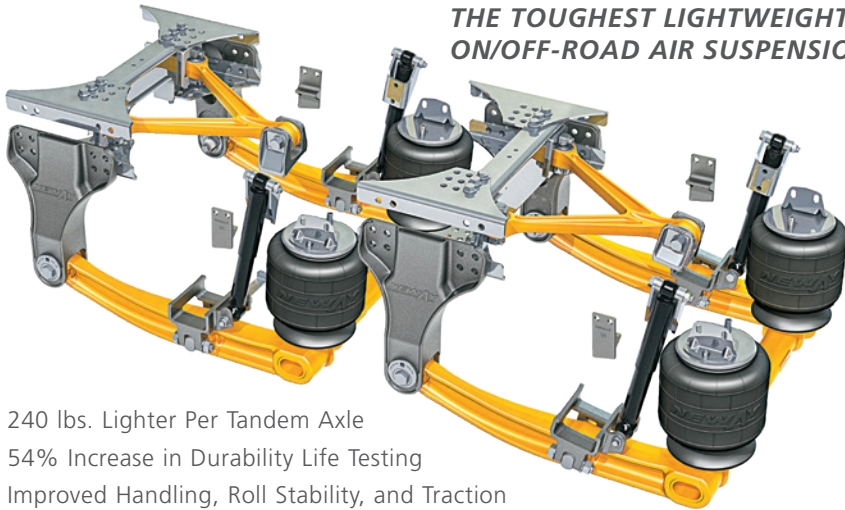


# DRIVE AXLE AIR SUSPENSIONS

Heavy and Severe-Duty Models for Truck and Tractor Applications.  
Approved for 100% Off-Road Applications.



## ADZ SERIES THE TOUGHEST LIGHTWEIGHT ON/OFF-ROAD AIR SUSPENSION



- 240 lbs. Lighter Per Tandem Axle
- 54% Increase in Durability Life Testing
- Improved Handling, Roll Stability, and Traction

**23,000 TO 26,000 LBS.**  
CAPACITY PER AXLE

### SINGLE AXLE

**CAPACITY:**  
23,000 / 26,000 LBS.  
(10,433 kg / 11,793 kg)

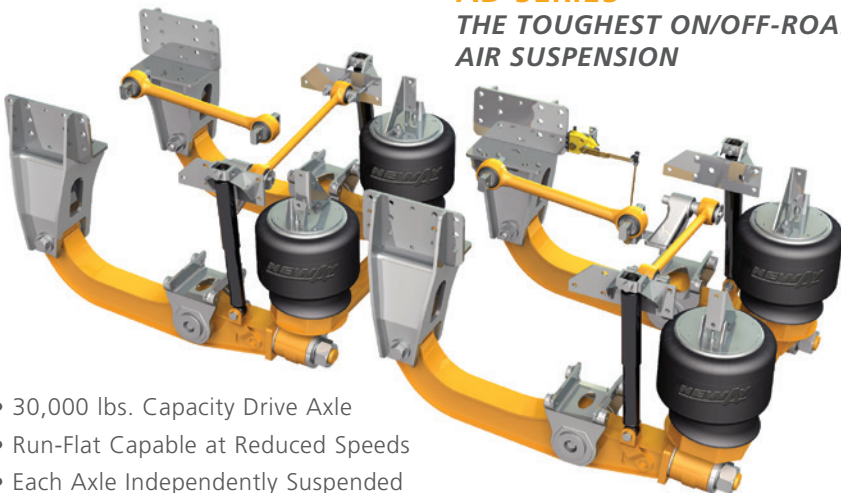
### TANDEM AXLE

**CAPACITY:**  
46,000 / 52,000 LBS.  
(20,865 kg / 23,587 kg)

### TRIDEM AXLE

**CAPACITY:**  
69,000 / 78,000 LBS.  
(31,298 kg / 35,380 kg)

## AD SERIES THE TOUGHEST ON/OFF-ROAD AIR SUSPENSION



- 30,000 lbs. Capacity Drive Axle
- Run-Flat Capable at Reduced Speeds
- Each Axle Independently Suspended

**30,000 LBS.**  
CAPACITY PER AXLE

### SINGLE AXLE

**CAPACITY:**  
30,000 LBS. (13,608 kg)

### TANDEM AXLE

**CAPACITY:**  
60,000 LBS. (27,216 kg)

### TRIDEM AXLE

**CAPACITY:**  
90,000 LBS. (40,823 kg)

NOTE: When specifying SAF-HOLLAND products for heavy and severe-duty operations, you must comply with the specified product application and capacity ratings and receive approval from vehicle manufacturer. Please contact SAF-HOLLAND Application Engineering for additional specification data and product application approvals.



TRAILER AXLES AND  
SUSPENSION SYSTEMS



COUPLING AND  
LIFTING SYSTEMS



SUSPENSIONS FOR  
TRUCKS AND BUSES



SUSPENSIONS AND  
AXLE SYSTEMS



V.ORLANDI  
TOWING  
SYSTEMS



TRAILER AXLES/SUSPENSIONS,  
COUPLING AND LIFTING  
SYSTEMS

[safholland.com](http://safholland.com)

**SAF-HOLLAND, Inc.**  
800.876.3929

**SAF-HOLLAND Canada Limited**  
519.537.3494  
Western Canada 604.574.7491

**SAF-HOLLAND Mexico**  
52.55.5456.8641