

TANK FLEET PRODUCT SOLUTIONS

DURABLE, WEIGHT OPTIMIZED PRODUCT
SOLUTIONS FOR TANK FLEETS

FIXED FRAME TRAILER AIR SUSPENSION SYSTEMS **CBXA AEROBEAM™** SERIES



CBX AEROBEAM™ SERIES LIGHTWEIGHT COMPACT DESIGN FOR TOP MOUNT MODELS

CAPACITIES:

23,000 lbs. (10,433 kg)

25,000 lbs. (11,340 kg)

30,000 lbs. (13,608 kg)

- SwingAlign™ Axle Alignment System
- Optional P89 Air Disc Brake Series
- Optional SAF SC Dressed Drum Brake Series
- Optional PosiLift™ Axle Lift System



CBXAN23 Top Mount
Shown with Optional
P89 Plus™ Air Disc Brake

SELF-STEER AXLE MODEL AVAILABLE



For Multi-Axle Trailers
Accommodates Ontario SPIF Regulations



OPTIONAL POSILIFT™

SUSPENSIONS AVAILABLE FOR LOW PROFILE TRAILERS



CBXu Series
Underslung Suspension



CBXy Series Yoke Mount
Suspension (CBy for Small
Drum Brake Package)



OPTIONAL SC SERIES
DRESSED DRUM BRAKE

CBXA AEROBEAM™ SERIES

SUSPENSION SYSTEM WEIGHTS (STANDARD BASE MODEL)	CBXAN23	CBXAS23	CBXAS25	CBXAS30
Undressed Drum Brake Axle (16.5" x 7" braked axle only – no slack adjusters or brake actuators)	469 lbs.	492 lbs.	524 lbs.	555 lbs.
SAF SC5 Dressed Drum Brake Axle (Includes steel hubs/drums, bearings, oil, slack adjusters and brake actuators)	858 lbs.*	881 lbs.*	913 lbs.*	942 lbs.*
P89 Disc Brake Axle	824 lbs.	847 lbs.	879 lbs.	908 lbs.

*Optional lightweight dressed drum brake wheel ends available - 68 lbs. lighter.



For More Information See XL-AS20110SL-en-US

OPTIONAL P89 SERIES AIR DISC BRAKES

Premium Performance Maintenance Free Design

Featuring the legendary INTEGRAL® rotor/hub and premium sealed bearings for reduced maintenance.

Featuring:

- INTEGRAL® rotor
- Premium brake chambers
- Robust parallel spindle
- 7-Year warranty (See Warranty for Complete Details)
- Long-life sealed bearings
- SAF caliper
- Premium spindle nuts

Proven Design Quality with Genuine Value

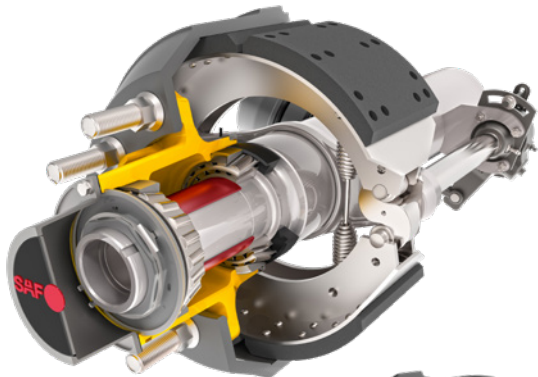
All the benefits you expect from the world's leading trailer axle disc brake supplier, at a price point that makes sense for commercial fleets of all sizes.

Featuring:

- Heavy-duty vented rotor
- Premium matched set bearings
- 5-Year warranty (See Warranty for Complete Details)
- SAF caliper
- Parallel or taper spindle

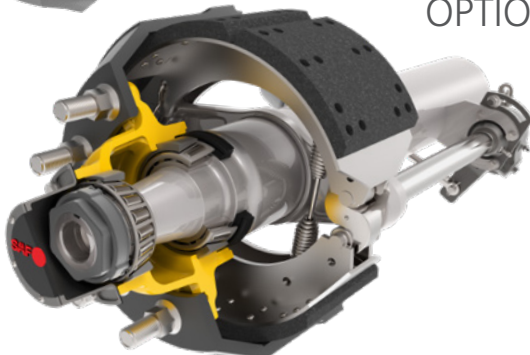
**INDUSTRY LEADING
AIR DISC BRAKE
WARRANTY**

See XL-AS11002WC warranty statement for complete details.



OPTIONAL SAF SC7 WHEEL END PACKAGE

Now available with dressed drum brake configuration, complete your CBX AeroBeam Suspension/Axle system with SAF SC7 wheel ends. Featuring 16½" x 7" extended life brake linings, premium axle spindle nuts, optimized bearing spacers, advanced long lasting seals and an extended peace of mind 7-year warranty.



OPTIONAL SAF SC5 WHEEL END PACKAGE

Now available with dressed drum brake configuration, complete your CBX AeroBeam Suspension/Axle system with SAF SC5 wheel ends. Featuring 16½" x 7" extended life brake linings, premium axle spindle nuts, advanced long lasting seals and a peace of mind 5-year warranty.

OPTIONAL ENHANCED TIRE PRESSURE MANAGEMENT SYSTEM



Tire Pilot Plus™ by PressureGuard
A Division of SAF-HOLLAND

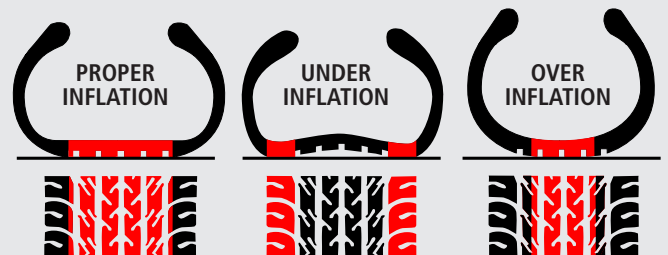
**IMPROVE PROFITABILITY BY
ENHANCING TIRE LIFE, FUEL
EFFICIENCY AND UPTIME**

Optional Tire Pilot Plus™ not only controls pressure through inflation, but also maintains equal pressure across all wheels and features high pressure relief for overinflated tires. The robust design sets it apart from competitive designs with durable components.

- Automatically responds to small leaks caused by road hazards like nails and metal debris.
- System warning light alerts the driver ONLY when there is a need to immediately seek service.
- Diamond knurled hose connections at both hubcaps and tire valve ends allow installation and replacement without a wrench.
- The stainless steel air hose connections are ported through the sides of the hubcap and are protected between the integrated fins.
- High Pressure Relief feature maintains equal and proper pressure for all tires.
- Tire Pilot Plus™ can easily be specified on CBX and ULX Series suspensions, or is available as a simple retrofit on existing trailers.
- Can save over \$750 per year per trailer*.



Proper Air Pressure is Critical to Tire Life



Full Contact
optimizes traction,
handling and
maximizes tire life.

Outside Contact
accelerates irregular
tread wear, increases
rolling resistance, and
reduces fuel efficiency
by up to 2%.

Center Contact
Only reduces tire
life and traction.
Tire is susceptible to
tread damage and
punctures.

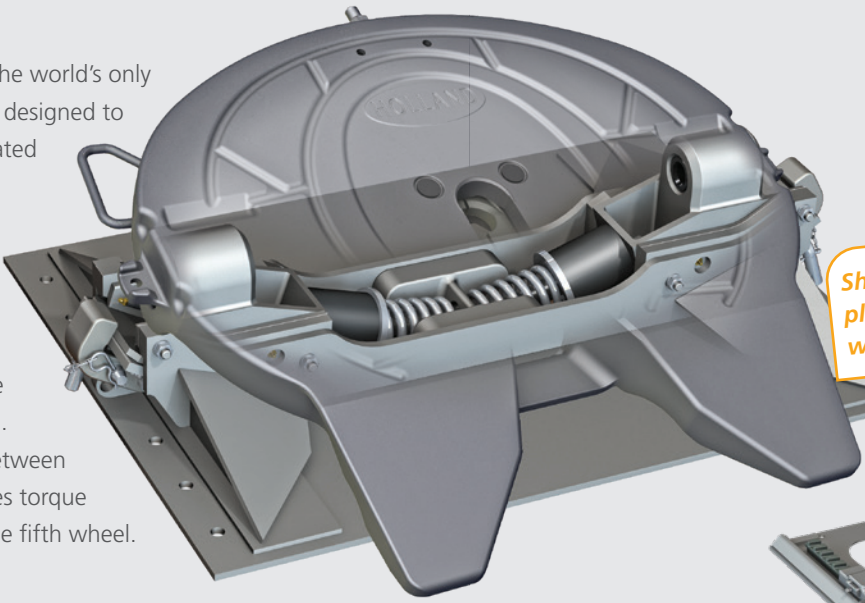
* TMC RP235 reports the following – Tires underinflated by 10% will wear 9% to 16% faster than properly inflated tires. Underinflated tires add roll resistance that can reduce fuel economy by as much 2%. The average fleet loses \$750 per trailer each year due to improperly inflated tires.



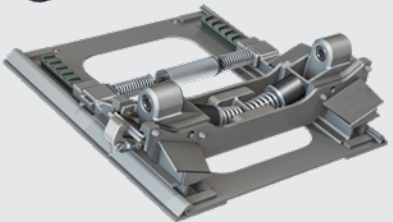
RELIEVE TORSIONAL TANK TRAILER STRESSES WITH **KOMPENSATOR**[®]

HOLLAND Kompensator[®] is the world's only fifth wheel mounting system designed to relieve the twisting force created between tractors and rigid in uneven terrain which can lead to frame cracks.

The patented design of the kompensator cradles the fifth wheel to allow it to slide side-to-side in uneven terrain. This allows more flexibility between tractor and trailer and reduces torque and twist transfer through the fifth wheel.

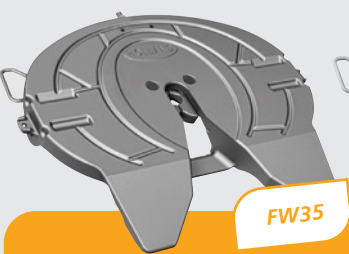


Shown with FW35 top plate – also available with FW33 and FW70



STATIONARY AND SLIDING MODELS AVAILABLE

The Kompensator[®] is trusted in off-highway markets for oil patches, natural gas fracking, and military applications as well as on-highway markets for tankers, and drybulks.



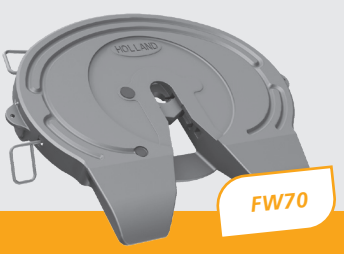
FW35

FW35
55,000 lbs. (25,000 kg)
Maximum Vertical Load
150,000 lbs. (68,000 kg)
Maximum Drawbar Pull



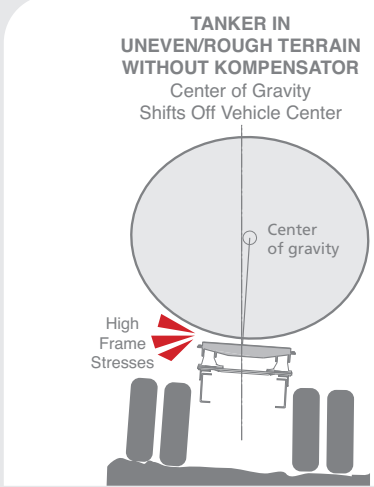
FW33

FW33 Low Lube Technology
55,000 lbs. (25,000 kg)
Maximum Vertical Load
150,000 lbs. (68,000 kg)
Maximum Drawbar Pull

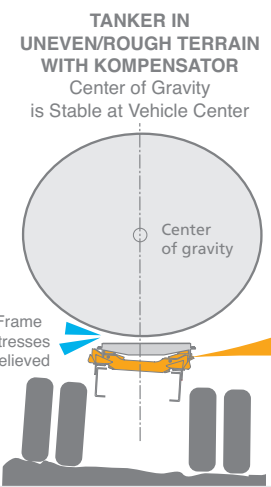


FW70

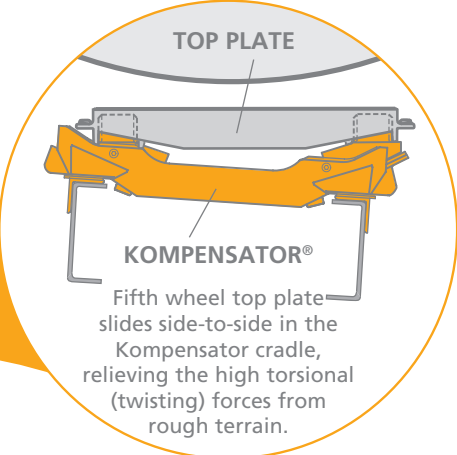
FW7040
70,000 lbs. (32,000 kg)
Maximum Vertical Load
200,000 lbs. (91,000 kg)
Maximum Drawbar Pull
(Available as Outboard Angle Mount Only)



TANKER IN UNEVEN/ROUGH TERRAIN WITHOUT KOMPENSATOR
Center of Gravity Shifts Off Vehicle Center



TANKER IN UNEVEN/ROUGH TERRAIN WITH KOMPENSATOR
Center of Gravity is Stable at Vehicle Center



TOP PLATE
KOMPENSATOR[®]
Fifth wheel top plate slides side-to-side in the Kompensator cradle, relieving the high torsional (twisting) forces from rough terrain.

THE **FWAL** IS THE WORLD'S LIGHTEST FIFTH WHEEL



Combine the proven reliability of HOLLAND Fifth Wheels with the leading technology of ALCOA forged aluminum, and the most innovative, lightweight fifth wheel in the world is created. Designed using master engineering, forging and machining technology, the FWAL is performance inspired to save weight and increase your bottom line with larger payloads.

UP TO
100 LBS. LIGHTER
VS STANDARD-DUTY EQUIVALENT



CAPACITY

55,000 lbs. (25,000 kg)
Maximum Vertical Load

150,000 lbs. (68,000 kg)
Maximum Drawbar Pull

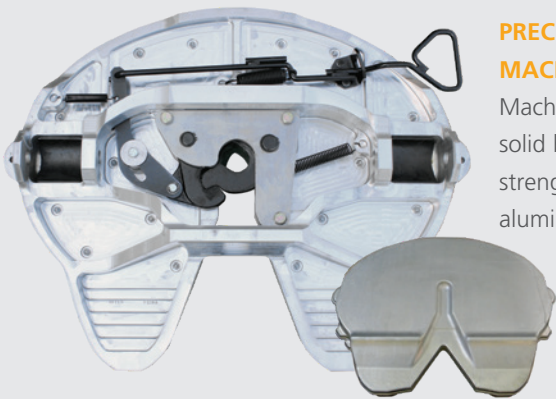
ADVANCED LOW LUBE PLATE DESIGN

Polyethylene material molded around a honeycomb pattern steel reinforcement plate to create a wear, peel, and warp resistant lube plate.



FORGED
ALUMINUM
TECHNOLOGY

WHEN MAXIMIZING
PAYLOAD MATTERS,
SPEC THE FWAL



PRECISION MACHINED

Machined from solid billet of high strength forged aluminum.

AIR RELEASE OPTION

Allows in-cab release of the fifth wheel locking mechanism. With just a simple pull of a dash-mounted air switch, a pneumatic cylinder on the fifth wheel will effortlessly open the locking mechanism.



WEIGHT SAVINGS =
INCREASED PAYLOAD
WHAT DOES -100 LBS. MEAN?

FUEL TANKER

$$+1 \text{ gal} = -6.4 \text{ lbs.}$$

$$\text{FWAL} = -100 \text{ lbs.}$$

$$\div -6.4 \text{ lbs.}$$

$$= +15.6 \text{ gal./haul}$$

$$15.6 \times 365 \times 3$$

gal. days hauls/day

$$=$$

$$\underline{\underline{+17,082 \text{ gal./yr.*}}}$$

BULK HAULER

$$\text{FWAL} = -100 \text{ lbs.}$$

$$100 \times 365 \times 2$$

lbs. days hauls/day

$$=$$

$$\underline{\underline{+73,000 \text{ lbs./yr.*}}}$$

* Numbers shown are for example purposes only. Substitute in your own numbers to calculate what your yearly payload increase could be.

SPECIFY THE **MARK V™** FOR THE INDUSTRY'S PERFORMANCE LEADER



DURABILITY FOR ROBUST PERFORMANCE

INDUSTRY-LEADING STANDARD FEATURES

Heavy-Duty Gearbox

- Gearbox with low-temperature premium lube rated for service for -65°F to 225°F

Double-D Crank Handle Connection

- Shaft with double-D end means a stronger more stabilized cranking connection

Large 5 1/8" Square Upper Tube Housing

- Large size tube with radius corners provides maximum strength to meet heavy-duty application demands

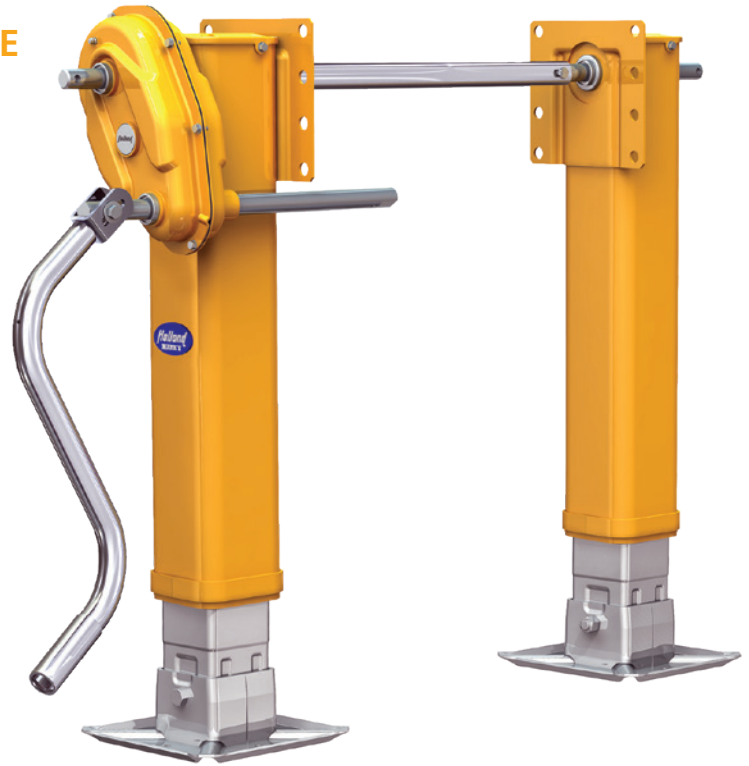
Heavy-duty One Piece Inner Tube

- One piece inner tube for maximum strength when the leg is in the extended position

Black Armour Metal Treatment



- Treatment process, unlike paint or powder coating, means the ultimate in corrosion protection with no rust creep



AVAILABLE FOR SEVERE-DUTY OPERATIONS

MARK V HD™

CAPACITY:

- 46,000 lbs. Side Load Capacity
- 62,500 lbs. Lift Capacity (100 ft./lbs. Input Torque)
- 200,000 lbs. Load Capacity



CAPACITIES:

- 62,500 lbs. Lift Capacity (100 ft./lbs. Input Torque)
- 200,000 lbs. Load Capacity
- 32,000 lbs. Side Load Capacity

GEARING:

- 2.5 Turns/Inch - High Gear
- 33.7 Turns/Inch - Low Gear

WEIGHT:

- 150 lbs. (17" Travel, RCF, MRL, Reverse Hafts)

NOTE: Weight measurements are less hardware.

All specified capacities are tested in accordance with AAR M-931.

STANDARD 5-YEAR WARRANTY OR PREMIUM 10-YEAR WARRANTY

HOLLAND Mark V models are available with standard or premium warranty options.

5-Year warranty covers defects in materials and workmanship.

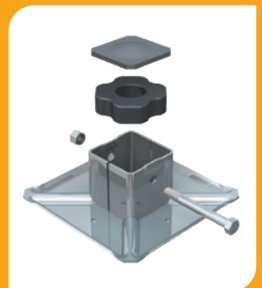
10-Year warranty* covers defects in material and workmanship and comes standard with the NoLube™ feature, HD Bearing and RCF.

The 10-Year NoLube feature also reduces your maintenance bottom line and covers unexpected repairs and associated costs, unless the product is altered or damaged.

*After 10 years of operation, HOLLAND legs with the 10-Year NoLube feature, require routine greasing every 6 months.

OPTIONAL RCF FOOT AVAILABLE –

RCF technology simply transmits the shock from the entire load in compression from steel-to-rubber-to-steel. That means reduced wear and damage to the cargo, trailer, and landing gear.



Note: See warranties for details
For 5-year warranty see XL-LG20045WC
For Lifetime warranty see XL-LG11395WC



TRAILER AXLES AND
SUSPENSION SYSTEMS



COUPLING AND
LIFTING SYSTEMS



SUSPENSIONS FOR
TRUCKS AND BUSES



SUSPENSIONS AND
AXLE SYSTEMS



V.ORLANDI
TOWING
SYSTEMS



TRAILER AXLES/SUSPENSIONS,
COUPLING AND LIFTING
SYSTEMS

safholland.com

SAF-HOLLAND, Inc.
800.876.3929

SAF-HOLLAND Canada Limited
519.537.3494
Western Canada 604.574.7491

SAF-HOLLAND Mexico
52.55.5456.8641