

## Owner's Manual

### Right and Left Two Hook with 2" Opening

TH-10050-3B and TH-10050-5B Specification



Weight:  
4 5/8 lbs. each

## Towing Applications

Designed to be used in pairs for tow cable or chain attachment. These tow hooks are to be used for on- or off-road towing of trailers or equipment.

## Mounting

1. Use a mounting structure of sufficient strength to support the rated capacity of the tow hook. SAE J849B is suggested as a reference.
2. Use the hole pattern described on the next page.
3. For TH-10050-3B, use two (2) .75 grade 8 fasteners per hook. Torque to 180 ft-lb min.

For TH-10050-5B, use two (2) 20mm class 10.9 fasteners per hook. Torque to 240 N•m min.

See (**Figure 3**) for important information on bolt selection.

## Maintenance

For proper performance, the following maintenance steps should be performed every 30,000 miles or 3 months, whichever comes first.

1. Clean and inspect for wear, damage and proper bolt torque. Replace as required using only Genuine SAF-HOLLAND original parts.
2. Inspect the tow cable or strap contact area for excessive wear. Replace when wear exceeds 1/8" from the original surface profile.

## General Information

1. DO NOT modify or add to the product.
2. Wear safety goggles during installation and removal.
3. Never strike any part of the item with a steel hammer.
4. DO NOT weld on these products written consent from the factory.

## Ratings

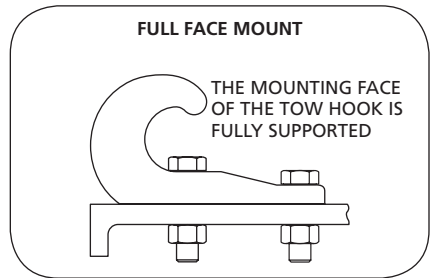
**TH-10050-3B.....Full Face Mount Rating**  
 (3/4") GR 8 bolts 45,000 lb. **Figure 1**

Cantilevered Mount Rating  
 33,000 lb. **Figure 2**

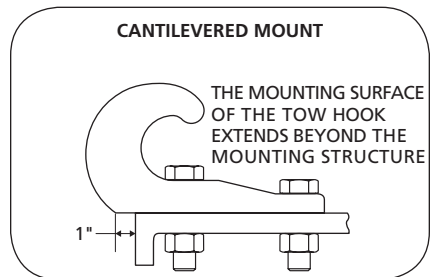
**TH-10050-5B.....Full Face Mount Rating**  
 (20mm) Class 10.9 bolts 45,000 lb. **Figure 1**

Cantilevered Mount Rating  
 33,000 lb. **Figure 2**

**Figure 1**

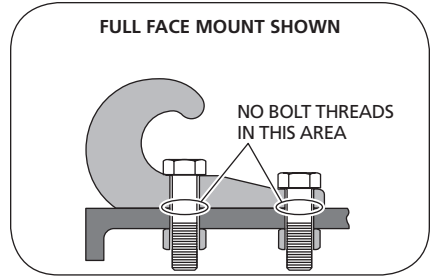


**Figure 2**

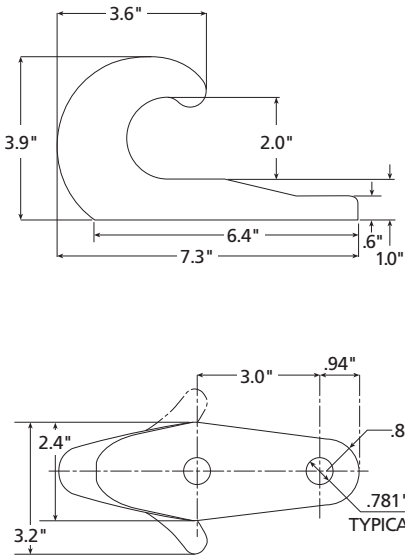


**IMPORTANT:** To achieve rated capacities, the bolts used must be of sufficient length to ensure the bolt threads are not in the area between the bottom of the tow hook and the mounting structure surface (**Figure 3**).

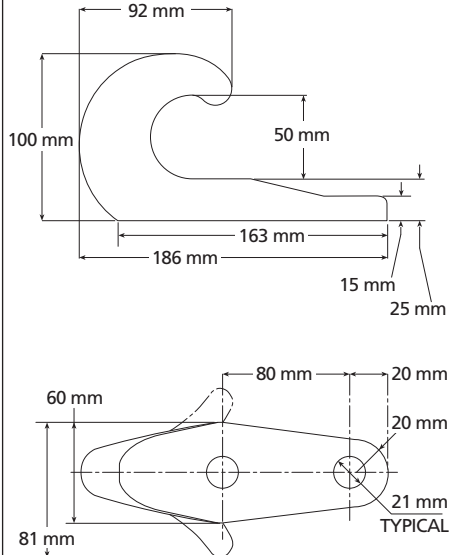
**Figure 3**



**TH-10050-3B**  
Includes TH-10050-3L and -3R



**TH-10050-5B**  
Includes TH-10050-5L and -5R



ALL DIMENSIONS SHOWN ARE NOMINAL



From fifth wheel rebuild kits to suspension bushing repair kits, SAF-HOLLAND Original Parts are the same quality components used in the original component assembly.

SAF-HOLLAND Original Parts are tested and designed to provide maximum performance and durability. Will-fits, look-alikes or, worse yet, counterfeit parts will only limit the performance potential and could possibly void SAF-HOLLAND's warranty. Always be sure to spec SAF-HOLLAND Original Parts when servicing your SAF-HOLLAND product.

**SAF-HOLLAND USA • 888.396.6501 • Fax 800.356.3929**  
**[www.safholland.us](http://www.safholland.us)**

**SAF-HOLLAND CANADA • 519.537.3494 • Fax 800.565.7753**  
**WESTERN CANADA • 604.574.7491 • Fax 604.574.0244**  
**[www.safholland.ca](http://www.safholland.ca)**

**SAF-HOLLAND MEXICO • 52.1.55.5456.8641 • Fax 52.55.58162230**  
**[www.safholland.com.mx](http://www.safholland.com.mx)**

**[info@safholland.com](mailto:info@safholland.com)**

SAF-HOLLAND USA, INC.  
1950 Industrial Blvd., Muskegon, MI 49443  
[www.safholland.com](http://www.safholland.com)

