



Important Info – October 2019

HOLLAND Coupling Products

Retirement Notice for HOLLAND Coupler Products

- CP-360 Models
- CP-400 Models
- CP-T-150 (Weld-on) Models
- XA-T-150 (Bolt-on) Models

Attention

SAF-HOLLAND® is announcing the discontinuation of all HOLLAND CP-360, CP-400, CP-T-150 and XA-T-150 coupler products for both OEM and Aftermarket customers.

Effective

February 1st, 2020 - No new orders will be accepted.

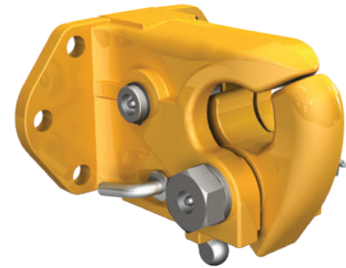
March 31st, 2020 - SAF-HOLLAND will cease production.

Service parts will be available through the SAF-HOLLAND Aftermarket for a limited time.

The SAF-HOLLAND sales team is communicating with customers who currently specify the CP-360, CP-400, CP-T-150 and XA-T-150 concerning the retirement of the products.

If you have any questions or require additional product assistance, please contact your account manager or customer service representative.

CP-360 Models



CP-400 Models



CP-T-150 (Weld-on) & XA-T-150 (Bolt-on) Models

