



# TF-675

## TF-675 DOLLY MASTER™ SPECIFICATIONS



Weight: 136 lbs.

### HITCH

The Dolly Master™ is an air-operated, truck-mounted yard-spotting assembly for positioning converter dollies.

**390 lbs. Maximum Lift with 80 psi Input Air Pressure**  
**15,000 lbs. Maximum Drawbar Pull**

The Dolly Master™ is comprised of a welded steel frame and a vertical slide with integral guide ramps, on which a 1.75" diameter coupling pin is mounted. A double-acting air cylinder utilizes the tractor's air supply to raise and lower the slide assembly through its 14.75" stroke. A cab control valve is also provided for inside control of the Dolly Master.

#### APPLICATIONS:

Yard spotting of trailer dollies.

**NOTE:** The Dolly Master is not intended for use in trailer coupling or spotting.

#### MOUNTING:

1. Locate the Dolly Master in a convenient location which does not obstruct tractor performance (cover lights, etc.) or inhibit driver visibility. Locating the unit directly in front of the driver's location may aid in alignment with dollies.
2. Locate the Dolly Master at an elevation that provides adequate clearance between the ground and the dolly jack when the Dolly Master is in the up position (see *Figure 1*). Also, provide clearance above the unit as shown.

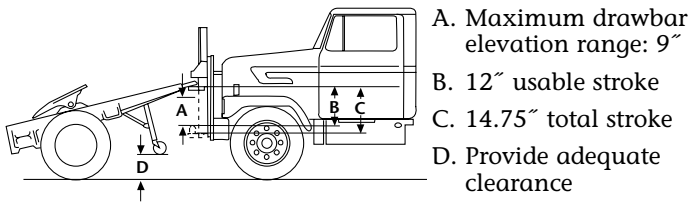


Figure 1

4. Use a secure mounting structure of sufficient strength to support the rated capacity of the unit. It is necessary to provide support at both the top and bottom of the unit.
5. Attach the Dolly Master to the mounting structure by bolting or welding (see specifications on the reverse).
6. A short whip guide (not supplied) can be attached to the top of the slide to aid aligning the dolly for hookup.
7. Mount the cab control valve, then attach air lines (not supplied) as follows: Attach the tractor air supply line to the bottom port on the rear of the valve.



#### WARNING

Use an air supply which is pressure protected (isolated) from the tractor brake system.

Connect the top port that protrudes on the right side of the valve to the lower cylinder port. Next, connect the lower valve port to the upper cylinder port. The top rear valve port should be plugged.

#### OPERATING INSTRUCTIONS:

1. Before operating, inspect for proper operation, worn, damaged or missing parts and a secure mounting. Correct as required before use.
2. Be sure that the Dolly Master is in the down position.
3. Drive slowly toward the dolly drawbar, centering it over the Dolly Master until the drawbar contacts the slide of the Dolly Master.
4. Move the cab control valve to the up position, raising the slide assembly.
5. Move the dolly to its desired location in the yard.
6. Lower the dolly by moving the cab control valve slowly to the down position.
7. Drive away from the dolly.



#### WARNING

Insure adequate vertical clearance above the dolly master to provide sufficient clearance for slide travel.

3. If the range of drawbar heights in your fleet exceeds 9", an additional Dolly Master, mounted at a different elevation, should be considered.



#### WARNING

Perform these procedures only with area clear of obstacles and other personnel.

## MAINTENANCE:

1. Clean and check for proper operation.
2. Inspect for worn, damaged or missing parts. Replace only with Holland parts.
3. Check for a secure mounting.
4. As required, lubricate the slide rails with a light, rust-resistant oil.



## WARNING

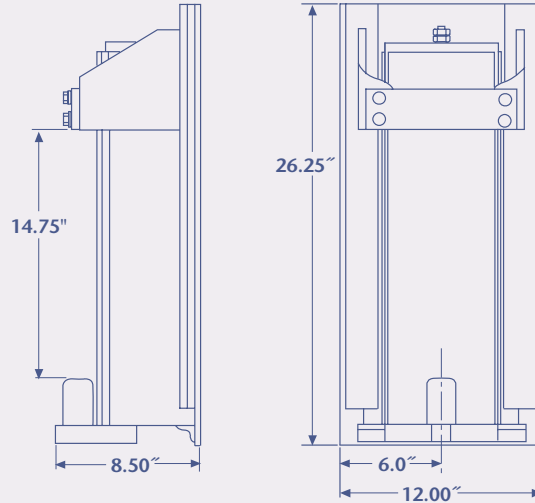
This equipment must not be used or maintained in a careless manner.

## GENERAL INFORMATION:

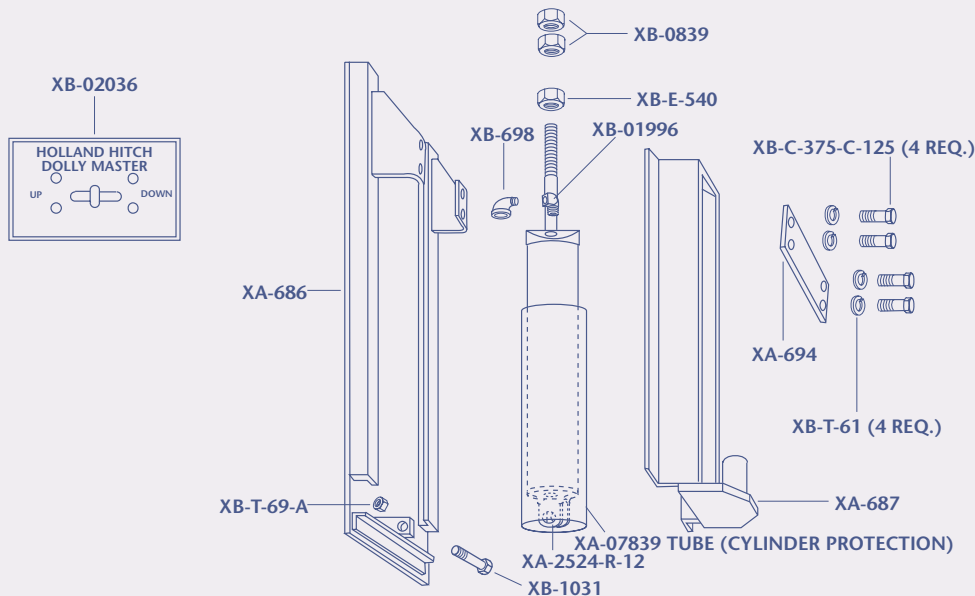
1. Do not modify or add to the product.
2. Wear safety goggles during installation, removal and servicing.
3. Never strike any part of the item with a steel hammer.
4. Do not weld on this product without written consent from the factory.

This product is covered by Holland's Commercial Products Warranty. Holland reserves the right, without giving prior notice, to change specifications and dimensions as designs are altered or improved.

## TF-675



### ALL DIMENSIONS SHOWN ARE NOMINAL



Copyright © December 2000 • The Holland Group, Inc.



#### Holland Hitch Company Divisions:

Holland, MI  
Whitehouse Station, NJ  
Denmark, SC  
Wylie, TX  
Milpitas, CA  
Phone: 888-396-6501  
Fax: 800-769-3299

#### Holland Binkley Co.

Warrenton, MO  
Phone: 636-456-3455  
Fax: 636-456-6792

#### Holland Binkley Co. Axle Products Division

Delphos, OH  
Phone: 419-692-6015  
Fax: 419-692-0503

#### Holland Neway International, Inc.

Muskegon, MI  
Phone: 231-773-3271  
Fax: 231-766-3893

#### Holland International, Inc.

Holland, MI  
Phone: 616-396-6501  
Fax: 616-396-1511

#### Holland Hitch of Canada, Ltd.

Woodstock, Ontario • Canada  
Phone: 519-537-3494  
Fax: 800-565-7753

#### Holland Hitch Western, Ltd.

Surrey, British Columbia • Canada  
Phone: 604-574-7491  
Fax: 604-574-0244

#### Holland Equipment, Ltd.

Norwich, Ontario • Canada  
Phone: 519-863-3414  
Fax: 519-863-2398