

# PH-775SN21 Pintle Hook Specifications

(Direct replacement for PH-775-D)  
Includes Manual Tertiary Lock

**NoLube swivel type replacement pintle hook.  
Compatible with XA-749-1 housing. Swivel action  
provides torsional relief at the coupling.**

## Important Safety Information

Maintain adequate vertical (tongue) load to properly control the trailer (generally 10%) but do not exceed the above rated capacities.

**DO NOT** damage the latch. Be particularly careful with the drawbar when coupling and uncoupling.

Other steps and inspections are also required. Consult OSHA and D.O.T. regulations and American Trucking Association for complete coupling and uncoupling procedures. These cover items such as cargo securement, brakes, lights, safety chains, and other important requirements.

This equipment must not be used or maintained in a careless manner.

## General Information

1. Do not modify or add to the product.
2. Wear safety goggles during installation, removal and servicing.
3. Never strike any part of the item with a steel hammer.
4. Do not weld on this product.

This product is covered by SAF-HOLLAND's Commercial Products Warranty. SAF-HOLLAND reserves the right, without giving prior notice, to change specifications and dimensions as designs are altered or improved.

## Towing Applications

For general over-the-road towing as well as highway doubles. Use **ONLY** in conjunction with a non-swivel type drawbar. For off-road applications, reduce the capacities above by 25%.

## Drawbar Eye Dimensions

3" I.D. with 1.63" diameter section.





**NOTE:** Please refer to the diagrams on page 4 for parts identification.

## Mounting

1. Use a mounting structure of sufficient strength to support the rated capacity of the pintle hook in accordance with SAE J847 and SAE J849.
2. Please refer to Specification Sheet XL-PH339-01 for complete mounting details of the PH-775SL21 (the version that includes an XA-10546 Housing for installation on a vehicle). This product is compatible with both the XA-10546 NoLube Housing and the XA-749-1 Housing (grease version). Specifications sheets are available on our website.

## Hook Removal and Replacement

1. Identify the housing type (standard greased or NoLube) being used to support the new PH-775SN21 replacement hook assembly. The XA-749-1 housing has a square mounting face with rounded corners and a grease fitting installed to provide lubrication to the shank. The XA-10546 NoLube housing has a scalloped mounting face with rounded corners, a machined groove to accept a seal on the face and non-metallic bushings pre-installed on the inside diameter. Note that the PH-775SN21 replacement hook assembly is compatible with both housings.

## Installation Into The XA-749-1 Housing

1. Remove the old pintle hook body by extracting the cotter pin (XB-781-1) from the rear shank, removing the castellated nut (XB-780-1) and then removing the heavy washer (XB-782) from the rear shank.
2. Slide the hook assembly out of the housing.
3. Discard the used cotter pin, nut, washer and hook assembly.
4. Inspect the interior of the housing for debris, metal chips or other damage.
5. Clean the interior of the housing.
6. Verify that the grease fitting is functional.
7. Apply a light coating of chassis grease to the interior of the housing and the machined exterior surface of the hook shank.
8. Insert the shank completely into the housing and rotate the hook so it is vertical.
9. Install the new washer (XA-10538-1) and new nut (XA-780-1) onto the threaded shank. Tighten the nut to 100 ft.-lbs. torque and then back off a maximum of 1/6 of a full turn to align the recesses in the castellated nut with the hole in the shank. Insert cotter pin (XB-781-1) through the nut and shank then spread ends of the cotter pin. Pintle hook should rotate freely in the housing with a modest effort.

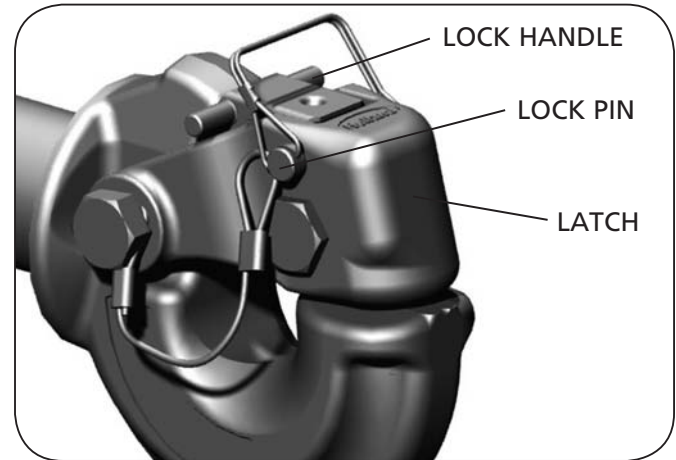
## Installation Into The XA-10546 NoLube Housing

1. Remove the old pintle hook body by extracting the cotter pin (XB-781-1) from the rear shank, removing the castellated nut (XB-780-1) and then removing the heavy washer (XB-782) from the rear shank.
2. Slide the hook assembly out of the housing using care not to damage the non-metallic bushings on the inside diameter.
3. Discard the used cotter pin, nut, washer and hook assembly.
4. Inspect the interior of the housing for debris, obvious damage or excessive wear of the bushings. If needed, clean per instructions in Step #5 below. If the housing has been damaged, it must be replaced (bushings are not replaceable). If the bushings are worn, it is possible to extend the life of the NoLube system following the instructions in Step #9 below.
5. If needed, use dry compressed air or a soft clean cloth to gently clean the interior surfaces of the housing and bushings. Use care to prevent debris from entering the housing while servicing. Do not clean with solvents. (Only if required, use alcohol with a soft clean rag on interior surfaces.)
6. If damaged, replace the housing following the Mounting Instructions stated on the PH-775SL21 Specification Sheet (XL-PH339-01) included with and attached to the product at the time of shipment.
7. Insert the shank completely into the housing and rotate the hook so it is vertical.
8. Install the new washer (XA-10538-1) and new nut (XA-780-1) onto the threaded shank. Tighten the nut to 100 ft.-lbs. torque and then back off a maximum of 1/6 of a full turn to align the recesses in the castellated nut with the hole in the shank. Maximum hook to housing gap to be 0.04" (**Figure 2**). Insert cotter pin (XB-781-1) through the nut and shank, then spread ends of the cotter pin. Pintle hook should rotate freely in the housing with a modest effort.
9. Check the pintle hook for vertical play within the housing. When up and down play exceeds 1/8" (0.125") the housing should be unbolted from its mounting structure and turned 180 degrees and remounted. When up and down play exceeds 1/4" (0.250") the housing should be replaced.

## Operating Instructions

1. Before operating, inspect for proper operation, worn, damaged or missing parts and a secure mounting. Correct as required before use.
2. Make sure the pintle is in the proper coupling position as shown at right (with the latch on top).
3. Open latch by removing the tertiary lock pin and lifting the lock handle away from the vehicle. Lift the latch assembly up toward the vehicle (**Figure 1**).
4. Position the drawbar eye over the horn of the pintle and lower into place. Use care to prevent damage to the pin and cable.
5. Push the latch closed and insert the lock pin in the hole provided in the latch (**Figure 1**).

**Figure 1**

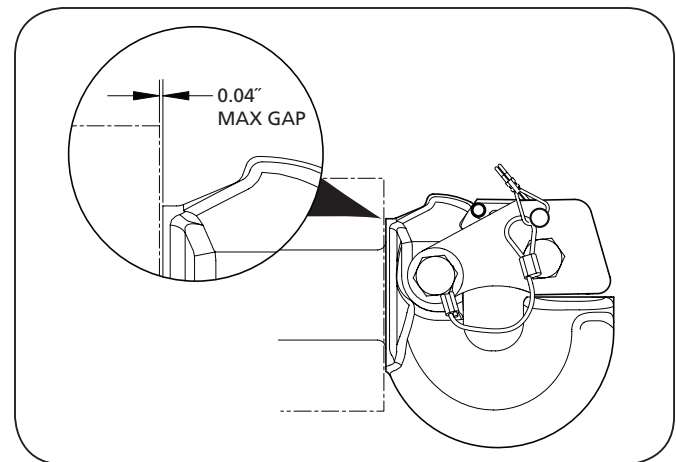


## Maintenance

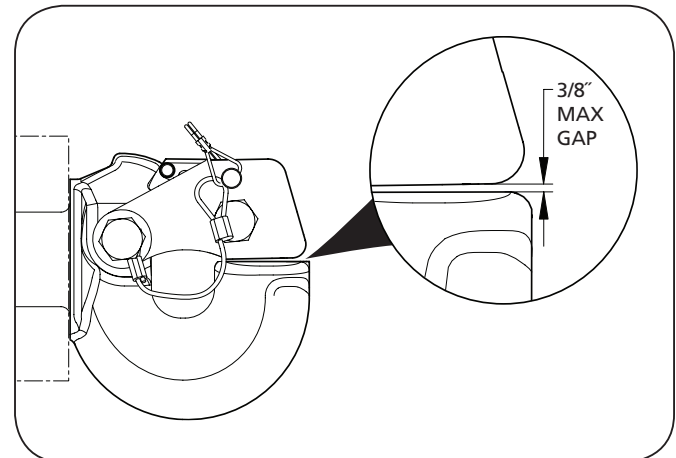
For proper performance the following maintenance steps should be performed every 30,000 miles or 3 months, whichever comes first.

1. Clean with compressed air or water only. Inspect for worn, damaged or missing parts. Replace as required using only Holland Genuine Parts.
2. Maximum hook to housing gap to be 0.04" (**Figure 2**). If gap is too large, remove cotter pin XA-781-1 and turn nut XA-780-1 until gap is removed. Then back off nut to the nearest slot and reinstall cotter pin XA-781-1.
3. Inspect the hook (XA-10517-1) and latch (XA-10545-3 sub-assembly) in areas where contact is made with the drawbar for excessive wear. Replace the hook when wear exceeds 3/16" (0.188") from the original surface profile.
4. With the latch closed, measure the gap between the hook and the latch while lifting up on the latch. Replace the latch (XA-10545-3 sub-assembly) when the gap exceeds 3/8" (0.375") (**Figure 3**).

**Figure 2**



**Figure 3**

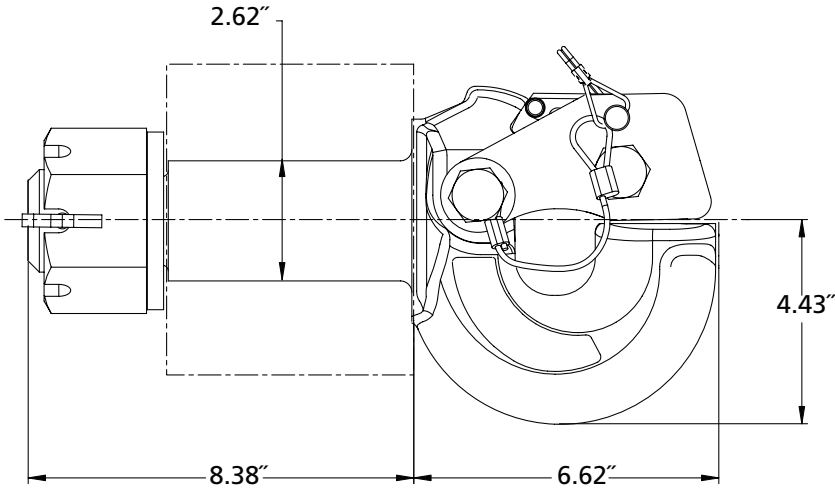




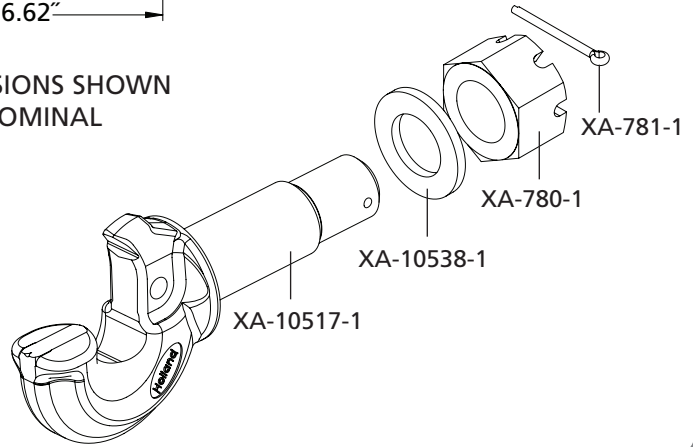
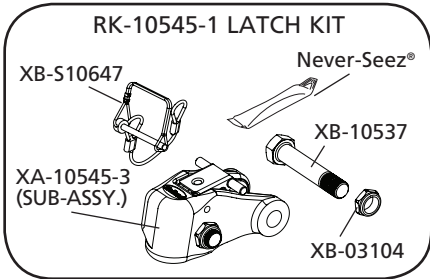
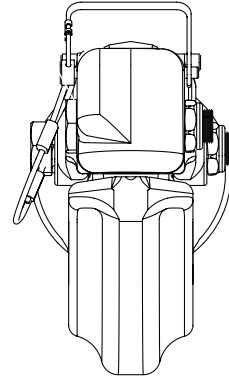
SAF-HOLLAND Group

# PH-775SN21 Pintle Hook

## PH-775SN21 NoLube™



ALL DIMENSIONS SHOWN ARE NOMINAL



## Reference: PH-775-01552

## Housing Identification

