

Installation of self-adjusting automatic slack adjusters from SAF and Haldex in SAF INTRADRUM rigid axles - Update

Dear customers

A few days ago, we sent you the Important Information 112 in which we announced the installation of Haldex S-ABA and SAF slack adjusters in order to maintain our delivery reliability and the shortest possible delivery times.

We assumed that you, as the vehicle manufacturer, had included both slack adjusters in your approvals. From reactions from the market, we could see that this is not always the case.

Therefore, we wanted to ask you to explicitly check whether these test protocols are included in your vehicle approvals.

For both slack adjuster types, test reports for alternative self-adjusting devices have been available (for some time). You can find the test protocols on the following homepage:

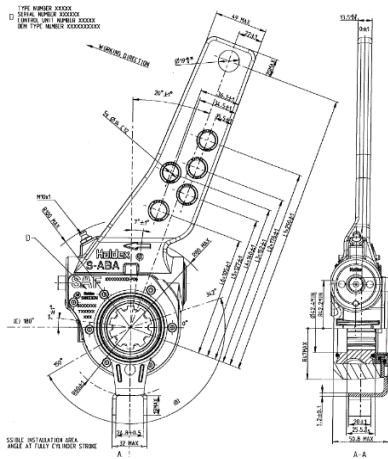
www.safholland.org/testreports

Part number	Brake	Brake homologation	Slack adjuster type	Version	Confirmation	Extension	Test report
04 175 0374 00	SNK 420x180	TDB0381	SAF6Y5	P06	110159	01	GS0037.1
		TDB0483			110158	01	GS0038.1
04 175 0314 00	SNK 420x180	TDB0381	HALDEX S-ABA	SAFXXXX XXXXXXX- P06	110429	--	GS0014.3
		TDB0483			110304	--	GS0015.3

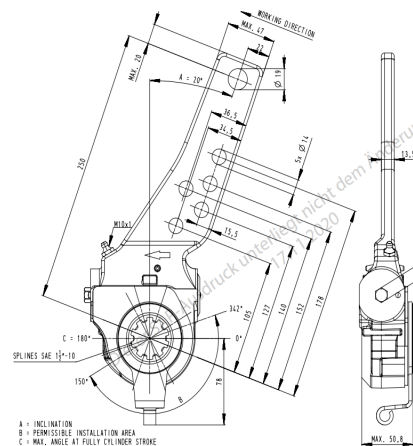
Thank you

Installation of self-adjusting automatic slack adjusters from SAF and Haldex in SAF INTRADRUM rigid axles - Update

To secure the supply, SAF-HOLLAND will use the Haldex S-ABA as well as the equivalent SAF slack adjuster for fully automatic slack adjusters on SAF INTRADRUM rigid axles from the beginning of April 2021. This measure enables SAF-HOLLAND to continue to supply you with drum-braked INTRA axles in a timely and continuous manner.



Haldex S-ABA slack adjuster



SAF 6Y5 slack adjuster

Installation of self-adjusting automatic slack adjusters from SAF and Haldex in SAF INTRADRUM rigid axles - Update

From April, both slack adjusters will be used as standard on the INTRADRUM drum brake SNK 420x180 with the following features:

- Automatic adjustment of the brake to compensate for brake lining wear.
- Adjustment of the brake for constant play in the direction of the drum,
- to ensure an optimal braking process
- The operating principle is applicable to all markets with drum brakes

Please note that it is not permitted to combine HALDEX S-ABA and SAF slack adjusters on one axle. The slack adjusters must **always be converted in pairs**.

At the customer's request, the previous slack adjuster Haldex is also available until further notice.